

Batch Number	1	Current Payments	\$385,080.65	Batch Total
<b>1043</b>	<b>ACCUSCAN</b>		<b>\$702.00</b>	<b>Vend Total</b>
P.O. #	205904	IMAGE SILO STORAGE MAY-JUN	\$702.00	po Total
<b>1196</b>	<b>APPLE COMPUTER INC.</b>		<b>\$5,729.50</b>	<b>Vend Total</b>
P.O. #	205528	ElectronicDevicefor MD student	\$5,729.50	po Total
<b>1206</b>	<b>ARCHWAY PROGRAMS INC.</b>		<b>\$92,524.00</b>	<b>Vend Total</b>
P.O. #	205978	PRIOR YEARS TUITION PAYABLES	\$46,933.52	po Total
P.O. #	206002	2020-2021 PY TUITION PAYABLE	\$23,519.46	P po Total
P.O. #	206004	2020-2021 PY TUITION PAYABLE	\$22,071.02	P po Total
<b>0865</b>	<b>ATLANTIC INVESTIGATIONS, LLC</b>		<b>\$1,011.00</b>	<b>Vend Total</b>
P.O. #	205923	RANDOMS & MRO POSITIVES	\$1,011.00	po Total
<b>1352</b>	<b>BAYADA HOME HEALTH CARE, INC.</b>		<b>\$7,960.00</b>	<b>Vend Total</b>
P.O. #	206007	Nursing Services	\$1,293.75	P po Total
P.O. #	206008	Nursing Services	\$180.00	P po Total
P.O. #	206009	Nursing Services	\$1,260.00	P po Total
P.O. #	206010	Nursing Services	\$180.00	P po Total
P.O. #	206011	Nursing Services	\$1,925.00	P po Total
P.O. #	206014	SUBSTITUTE SCHOOL NURSE	\$247.50	P po Total
P.O. #	206015	SUBSTITUTE SCHOOL NURSE	\$1,100.00	P po Total
P.O. #	206018	SUBSTITUTE SCHOOL NURSE	\$330.00	P po Total
P.O. #	206031	SUBSTITUTE SCHOOL NURSE	\$1,443.75	P po Total
<b>1363</b>	<b>BECK; DOROTHY</b>		<b>\$3,960.00</b>	<b>Vend Total</b>
P.O. #	205917	APRIL, MAY, JUNE TRANSPORT	\$3,960.00	po Total
<b>1376</b>	<b>BELMONT AND CRYSTAL SPRINGS</b>		<b>\$76.70</b>	<b>Vend Total</b>
P.O. #	205920	WATER	\$40.12	P po Total
P.O. #	206027	WATER SERVICE SSS JUNE 2022	\$36.58	P po Total
<b>E071</b>	<b>BIRDSONG; KALEELA</b>		<b>\$500.00</b>	<b>Vend Total</b>
P.O. #	205947	AIDE IN LIEU OF TRANSPORTATION	\$500.00	po Total
<b>K246</b>	<b>BLOOMFIELD BOARD OF EDUCATION</b>		<b>\$10,349.34</b>	<b>Vend Total</b>
P.O. #	205966	2020-2021 PY TUITION REFUND	\$10,349.34	po Total
<b>1456</b>	<b>BONNIE BRAE</b>		<b>\$559.20</b>	<b>Vend Total</b>
P.O. #	206005	2020-2021 PY TUITION PAYABLE	\$559.20	po Total
<b>1508</b>	<b>BROOKFIELD ACADEMY</b>		<b>\$1,917.16</b>	<b>Vend Total</b>
P.O. #	205993	2020-2021 PY TUITION PAYABLE	\$1,917.16	po Total
<b>8971</b>	<b>CANTILLO; PHILIP</b>		<b>\$85.00</b>	<b>Vend Total</b>
P.O. #	205913	DOT PHYSICAL REIMBURSEMENT	\$85.00	po Total

Batch Number	1	Current Payments	\$385,080.65	Batch Total
<b>1732</b>		<b>CDW GOVERNMENT INC.</b>	<b>\$8,199.27</b>	<b>Vend Total</b>
	P.O. #	202025 camera services	\$7,560.00	P po Total
	P.O. #	202935 AP Printer	\$639.27	P po Total
<b>0303</b>		<b>CLAYTON PUBLIC SCHOOLS</b>	<b>\$1,098.93</b>	<b>Vend Total</b>
	P.O. #	205971 2019-2021 PY TUITION PAYABLE	\$369.93	po Total
	P.O. #	205999 2020-2021 PY TUITION PAYABLE	\$729.00	po Total
<b>1881</b>		<b>COMCAST CABLE</b>	<b>\$184.17</b>	<b>Vend Total</b>
	P.O. #	205922 BUS GARAGE SERVICE	\$184.17	po Total
<b>1941</b>		<b>COURIER-POST - LEGAL</b>	<b>\$194.40</b>	<b>Vend Total</b>
	P.O. #	204891 PUBLIC NOTICE FOR BID 2022-07	\$97.20	po Total
	P.O. #	204892 PUBLIC NOTICE FOR BID 2022-17	\$97.20	po Total
<b>1956</b>		<b>CREATIVE ACHIEVEMENT ACADEMY</b>	<b>\$2,701.00</b>	<b>Vend Total</b>
	P.O. #	205982 2020-2021 PY TUITION PAYABLE	\$2,701.00	po Total
<b>2094</b>		<b>DELTA DENTAL PLAN OF NJ</b>	<b>\$316.35</b>	<b>Vend Total</b>
	P.O. #	206025 COBRA JUNE 2022	\$316.35	po Total
<b>2111</b>		<b>DEPT. OF CHILDREN &amp; FAMILIES</b>	<b>\$4,791.40</b>	<b>Vend Total</b>
	P.O. #	205996 2020-2021 PY TUITION REFUND	\$4,791.40	po Total
<b>0259</b>		<b>DOUGLAS; ROBERT</b>	<b>\$500.00</b>	<b>Vend Total</b>
	P.O. #	205928 AIDE IN LIEU OF TRANSPORTATION	\$500.00	po Total
<b>3729</b>		<b>ESS SUPPORT SERVICES, LLC</b>	<b>\$7,707.42</b>	<b>Vend Total</b>
	P.O. #	205907 BUS AIDES JUN PARTIAL	\$7,707.42	po Total
<b>A197</b>		<b>FIRST CHILDREN LEARNING SERVICES, LLC</b>	<b>\$32,842.00</b>	<b>Vend Total</b>
	P.O. #	206006 Professional Services	\$32,842.00	po Total
<b>0322</b>		<b>FOLLETT SCHOOL SOLUTIONS INC.</b>	<b>\$19,440.54</b>	<b>Vend Total</b>
	P.O. #	200691 library book order	\$8,758.94	P po Total
	P.O. #	200735 Books	\$8,725.21	P po Total
	P.O. #	205714 S/R- Title I Supplies for MS	\$1,956.39	P po Total
<b>N314</b>		<b>FRAZIER; ROBIN</b>	<b>\$766.88</b>	<b>Vend Total</b>
	P.O. #	205951 AIDE IN LIEU OF TRANSPORTATION	\$766.88	po Total
<b>2587</b>		<b>GARFIELD PARK ACADEMY</b>	<b>\$2,203.00</b>	<b>Vend Total</b>
	P.O. #	205979 2019-2020 PY TUITION PAYABLE	\$2,203.00	po Total
<b>E674</b>		<b>GRIFFIN; RANA</b>	<b>\$500.00</b>	<b>Vend Total</b>
	P.O. #	205946 AIDE IN LIEU OF TRANSPORTATION	\$500.00	po Total
<b>2757</b>		<b>HADDONFIELD MEMORIAL H.S. ATHLETICS</b>	<b>\$216.00</b>	<b>Vend Total</b>
	P.O. #	205416 Entry Fee - Haddonfield Dist.	\$216.00	po Total

Batch Number	1	Current Payments	\$385,080.65	Batch Total
<b>2781</b>	<b>HAMMONTON BOARD OF EDUCATION</b>		<b>\$58.90</b>	<b>Vend Total</b>
P.O. #	205998	2020-2021 PY TUITION PAYABLE	\$58.90	po Total
<b>2911</b>	<b>HOLLYDELL SCHOOL</b>		<b>\$18,399.20</b>	<b>Vend Total</b>
P.O. #	205980	2020-2021 PY TUITION PAYABLE	\$18,399.20	po Total
<b>K537</b>	<b>HOOVER TRUCK CENTERS, INC</b>		<b>\$263.37</b>	<b>Vend Total</b>
P.O. #	200584	ELEMENT; ARM	\$263.37	po Total
<b>3098</b>	<b>JOE'S AUTO REPAIR</b>		<b>\$950.00</b>	<b>Vend Total</b>
P.O. #	205921	TOWS	\$950.00	po Total
<b>S981</b>	<b>JOHNSON; CHAYLIN</b>		<b>\$500.00</b>	<b>Vend Total</b>
P.O. #	205926	AIDE IN LIEU OF TRANSPORTATION	\$500.00	po Total
<b>P336</b>	<b>KEYS; CHRISTY</b>		<b>\$1,000.00</b>	<b>Vend Total</b>
P.O. #	206022	AIDE IN LIEU OF TRANSPORTATION	\$1,000.00	po Total
<b>T301</b>	<b>LAKESHORE LEARNING MATERIALS, LLC</b>		<b>\$2,546.01</b>	<b>Vend Total</b>
P.O. #	205866	Classromteachingsupple,sped	\$2,546.01	po Total
<b>M522</b>	<b>LINTER; SHARON</b>		<b>\$500.00</b>	<b>Vend Total</b>
P.O. #	205949	AIDE IN LIEU OF TRANSPORTATION	\$500.00	po Total
<b>D732</b>	<b>MARK IRWIN ASSOCIATES INC.</b>		<b>\$5,300.00</b>	<b>Vend Total</b>
P.O. #	205984	STEAM PIPE HS SUPPLEMENTAL	\$5,300.00	po Total
<b>8581</b>	<b>MCGRAW HILL EDUCATION</b>		<b>\$11,090.60</b>	<b>Vend Total</b>
P.O. #	205172	Street Law	\$6,133.70	po Total
P.O. #	205176	principals of microbiology	\$4,956.90 P	po Total
<b>M910</b>	<b>MERCER CTY SPECIAL SERVICE SCHOOL DISTRI</b>		<b>\$11,700.54</b>	<b>Vend Total</b>
P.O. #	205932	APRIL/MAY/JUNE TRANSPORTATION	\$11,700.54	po Total
<b>R435</b>	<b>MICHELINI; CANDICE</b>		<b>\$1,000.00</b>	<b>Vend Total</b>
P.O. #	205929	AIDE IN LIEU OF TRANSPORTATION	\$1,000.00	po Total
<b>3780</b>	<b>MOORESTOWN TOWNSHIP PUBLIC SCHOOLS</b>		<b>\$3,177.00</b>	<b>Vend Total</b>
P.O. #	205986	2020-2021 PY TUITION ADJ. PAYA	\$3,177.00	po Total
<b>4118</b>	<b>PARK; DONNA</b>		<b>\$29.75</b>	<b>Vend Total</b>
P.O. #	205912	CRIMINAL ARCHIVE REIMBURSEMENT	\$29.75	po Total
<b>4146</b>	<b>PAUL'S CUSTOM AWARDS &amp;</b>		<b>\$465.00</b>	<b>Vend Total</b>
P.O. #	205400	spirit of excellence awards	\$465.00	po Total
<b>Z424</b>	<b>PEMBERTON SUPPLY COMPANY LLC</b>		<b>\$4,395.62</b>	<b>Vend Total</b>
P.O. #	203253	DISTRICT ELECTRIC SUPPLIES	\$4,395.62	po Total
<b>4180</b>	<b>PENNSYLVANIA TURNPIKE COMMISSION</b>		<b>\$8.70</b>	<b>Vend Total</b>
P.O. #	205968	DELAWARE RIVER BRIDE VIOLATION	\$8.70	po Total

Batch Number	1	Current Payments	\$385,080.65	Batch Total
<b>8484</b>	<b>PINE HILL BOARD OF EDUCATION</b>		<b>\$1,968.74</b>	<b>Vend Total</b>
P.O. #	205972	2019-2020 PY TUITION PAYABLE	\$1,365.00	P po Total
P.O. #	205997	2020-2021 PY TUITION PAYABLE	\$603.74	P po Total
<b>2992</b>	<b>RICOH USA, INC.</b>		<b>\$177.83</b>	<b>Vend Total</b>
P.O. #	205935	COPIER RENTAL-EAGLE'S LANDING	\$177.83	po Total
<b>P148</b>	<b>RIVERTON BOARD OF EDUCATION</b>		<b>\$129.43</b>	<b>Vend Total</b>
P.O. #	205965	2020-2021 PY TUITION REFUND	\$129.43	po Total
<b>Y228</b>	<b>ROBINSON; BARBARA</b>		<b>\$1,000.00</b>	<b>Vend Total</b>
P.O. #	205925	AIDE IN LIEU OF TRANSPORTATION	\$1,000.00	po Total
<b>8587</b>	<b>RUTGERS CENTER FOR LITERACY DEV./RRWC</b>		<b>\$6,000.00</b>	<b>Vend Total</b>
P.O. #	205591	S/R-Prof. Dev.	\$6,000.00	po Total
<b>D020</b>	<b>RUTLEDGE; JENNIFER</b>		<b>\$2,000.00</b>	<b>Vend Total</b>
P.O. #	206017	AIDE IN LIEU OF TRANSPORTATION	\$2,000.00	po Total
<b>4696</b>	<b>SAFETY-KLEEN SYSTEMS, INC.</b>		<b>\$240.06</b>	<b>Vend Total</b>
P.O. #	206001	SOLVENT	\$240.06	po Total
<b>Q014</b>	<b>SAMSARA NETWORKS INC.</b>		<b>\$21,252.00</b>	<b>Vend Total</b>
P.O. #	200670	GPS	\$21,252.00	po Total
<b>J119</b>	<b>SAVVAS LEARNING COMPANY LLC</b>		<b>\$16,283.03</b>	<b>Vend Total</b>
P.O. #	204889	Essentials of Human Anatomy-HS	\$16,283.03	po Total
<b>6248</b>	<b>SEIDENBURG; DEBRA</b>		<b>\$125.00</b>	<b>Vend Total</b>
P.O. #	205911	CDL PHYSICAL REIMBURSEMENT	\$125.00	po Total
<b>4873</b>	<b>SERVICE TIRE TRUCK CENTER INC.</b>		<b>\$144.00</b>	<b>Vend Total</b>
P.O. #	205488	MOUNTS/DISMOUNTS/SCRAP	\$144.00	po Total
<b>0126</b>	<b>SOUNDTRACKS PRODUCTION SERVICES LLC</b>		<b>\$2,350.00</b>	<b>Vend Total</b>
P.O. #	203751	Graduation Set Up	\$2,350.00	po Total
<b>Z580</b>	<b>STABINSKI; SHANE</b>		<b>\$1,000.00</b>	<b>Vend Total</b>
P.O. #	205948	AIDE IN LIEU OF TRANSPORTATION	\$1,000.00	po Total
<b>T136</b>	<b>STANDARDS SOLUTIONS HOLDINGS, LLC</b>		<b>\$2,000.00</b>	<b>Vend Total</b>
P.O. #	201874	S/R-Prof. Dev.	\$2,000.00	P po Total
<b>5158</b>	<b>STAPLES CONTRACT &amp; COMMERCIAL LLC</b>		<b>\$834.29</b>	<b>Vend Total</b>
P.O. #	205546	OFFICE/GARAGE SUPPLIES	\$817.65	P po Total
P.O. #	205840	OFFICE SUPPLIES	\$16.64	P po Total
<b>5182</b>	<b>STEPS TO LITERACY</b>		<b>\$5,625.79</b>	<b>Vend Total</b>
P.O. #	204738	S/R-Title I Supplies for Sch 3	\$5,625.79	po Total

Batch Number	1	Current Payments	\$385,080.65	Batch Total
<b>0883</b>	<b>THE LAMPO GROUP, INC.</b>		<b>\$13,992.64</b>	<b>Vend Total</b>
P.O. #	205173	Managing money	\$13,992.64	po Total
<b>5473</b>	<b>THE SIGN COMPANY INC.</b>		<b>\$942.00</b>	<b>Vend Total</b>
P.O. #	201223	MAINTENANCE VEHICLE LETTERING	\$942.00	po Total
<b>0315</b>	<b>TINA'S PRODUCTIONS, INC.</b>		<b>\$350.00</b>	<b>Vend Total</b>
P.O. #	204624	HS COSTUME RENTALS	\$350.00	po Total
<b>5661</b>	<b>TROXELL COMMUNICATIONS INC.</b>		<b>\$1,807.92</b>	<b>Vend Total</b>
P.O. #	204199	HS Technology	\$1,807.92	po Total
<b>8458</b>	<b>ULINE INC.</b>		<b>\$2,343.97</b>	<b>Vend Total</b>
P.O. #	205722	Teachers Lounge mailboxes	\$2,343.97	po Total
<b>5845</b>	<b>VISION SERVICE PLAN - (EA)</b>		<b>\$62.32</b>	<b>Vend Total</b>
P.O. #	206026	COBRA JUNE 2022	\$62.32	po Total
<b>4738</b>	<b>VWR INTERNATIONAL, LLC dba SARGENT WELCH</b>		<b>\$173.00</b>	<b>Vend Total</b>
P.O. #	205647	S/R-Title I MS Supplies	\$173.00	po Total
<b>5873</b>	<b>WADE, LONG &amp; WOOD, LLC</b>		<b>\$29,984.00</b>	<b>Vend Total</b>
P.O. #	206033	MAY 2022	\$15,616.00	po Total
P.O. #	206034	JUNE 2022	\$14,368.00 P	po Total
<b>F506</b>	<b>WATKINS; TYRONE</b>		<b>\$500.00</b>	<b>Vend Total</b>
P.O. #	205927	AIDE IN LIEU OF TRANSPORTATION	\$500.00	po Total
<b>6091</b>	<b>WIRELESS ELECTRONICS INC.</b>		<b>\$3,262.50</b>	<b>Vend Total</b>
P.O. #	203126	CAMERA CHECKS	\$3,000.00	po Total
P.O. #	205952	DISPATCH RADIO SERVICE	\$262.50 P	po Total
<b>6110</b>	<b>WOLFINGTON BODY CO INC</b>		<b>\$2,112.18</b>	<b>Vend Total</b>
P.O. #	101348	OILPAN KIT	\$1,059.20 P	po Total
P.O. #	200578	MINI 33	\$1,052.98 P	po Total
<b>Total for batch =</b>			<b>\$385,080.65</b>	

*[Signature]* 8/5/22

Batch Number	8	Future Year POs	\$638,889.58	Batch Total
<b>1075</b>	<b>ADVENTURE AQUARIUM</b>		<b>\$290.00</b>	<b>Vend Total</b>
P.O. #	300265	EAGLES NEST AQUARIUM LUNCH	\$290.00	po Total
<b>1199</b>	<b>ARAMARK</b>		<b>\$385,459.40</b>	<b>Vend Total</b>
P.O. #	300148	SERVICES JULY-JUNE 2022-2023	\$385,459.40	P po Total
<b>1250</b>	<b>ATLANTIC CITY ELECTRIC</b>		<b>\$7,392.36</b>	<b>Vend Total</b>
P.O. #	300620	JULY 2022 ELECTRIC	\$7,392.36	po Total
<b>A371</b>	<b>BRAUNGART INVESTORS, LLC</b>		<b>\$252.00</b>	<b>Vend Total</b>
P.O. #	300627	PLANT & CONTAINERS AT BOE	\$252.00	po Total
<b>1642</b>	<b>CAMDENS PROMISE CHARTER SCHOOL</b>		<b>\$9,124.00</b>	<b>Vend Total</b>
P.O. #	300029	2022-2023 CHARTER SCHOOL	\$9,124.00	P po Total
<b>1670</b>	<b>CARCAMO ED.D; DOROTHY</b>		<b>\$35.55</b>	<b>Vend Total</b>
P.O. #	300534	reimbursement - Staples	\$35.55	po Total
<b>0627</b>	<b>CENTURY WATER CONDITIONING &amp; PURIF. INC.</b>		<b>\$132.00</b>	<b>Vend Total</b>
P.O. #	300417	SCHOOL 1 WATER TEST	\$132.00	po Total
<b>1881</b>	<b>COMCAST CABLE</b>		<b>\$25.56</b>	<b>Vend Total</b>
P.O. #	300293	DIGITALADAPTERS ADMIN	\$25.56	P po Total
<b>1941</b>	<b>COURIER-POST - LEGAL</b>		<b>\$45.72</b>	<b>Vend Total</b>
P.O. #	300408	PN CANCELLED MTG 7/27/22	\$45.72	po Total
<b>2094</b>	<b>DELTA DENTAL PLAN OF NJ</b>		<b>\$48,087.25</b>	<b>Vend Total</b>
P.O. #	300499	DENTAL BENEFITS AUG 2022	\$48,087.25	po Total
<b>2101</b>	<b>DEMCO INC.</b>		<b>\$752.47</b>	<b>Vend Total</b>
P.O. #	350325	Library Supplies	\$99.65	P po Total
P.O. #	350327	Library Supplies	\$652.82	P po Total
<b>2233</b>	<b>DUNPHY; KEVIN</b>		<b>\$202.75</b>	<b>Vend Total</b>
P.O. #	300575	Mileage Reimburse for July,OOD	\$202.75	po Total
<b>5408</b>	<b>FALLS GROUP LLC</b>		<b>\$894.00</b>	<b>Vend Total</b>
P.O. #	300230	EAGLES LANDING FIELD TRIP	\$894.00	po Total
<b>2462</b>	<b>FLAGSHIP DENTAL PLANS</b>		<b>\$372.41</b>	<b>Vend Total</b>
P.O. #	300048	FLAGSHIP DENTAL PLAN 22-23 YR	\$372.41	P po Total
<b>0098</b>	<b>FRONTLINE TECHNOLOGIES GROUP LLC</b>		<b>\$23,819.33</b>	<b>Vend Total</b>
P.O. #	300389	IEP DIRECT 22/23 SY	\$23,819.33	po Total
<b>U172</b>	<b>GENERAL HEALTHCARE RESOURCES INC.</b>		<b>\$2,128.00</b>	<b>Vend Total</b>
P.O. #	300403	OT services rendered ESY	\$912.00	po Total
P.O. #	300500	OT service rend for ESY	\$1,216.00	po Total

Batch Number	8	Future Year POs	\$638,889.58	Batch Total
--------------	---	-----------------	--------------	-------------

<b>3269</b>	<b>KURTZ BROS. INC</b>		<b>\$33.36</b>	<b>Vend Total</b>
P.O. #	350485	Teaching Aids	\$33.36	po Total
<b>3287</b>	<b>LAKESHORE LEARNING MATERIAL</b>		<b>\$39.58</b>	<b>Vend Total</b>
P.O. #	350470	Teaching Aids	\$39.58	po Total
<b>3330</b>	<b>LEAP ACADEMY UNIV. HIGH CHARTER SCHOOL</b>		<b>\$30,368.00</b>	<b>Vend Total</b>
P.O. #	300023	2022-2023 CHARTER SCHOOL	\$30,368.00	P po Total
<b>A343</b>	<b>NEW JERSEY MOTOR VEHICLE COMMISSION</b>		<b>\$800.00</b>	<b>Vend Total</b>
P.O. #	300351	REGISTRATION	\$500.00	po Total
P.O. #	300352	REGISTRATIONS	\$300.00	P po Total
<b>3997</b>	<b>NJ PRINCIPALS AND SUPERVISORS ASSOC.</b>		<b>\$2,535.00</b>	<b>Vend Total</b>
P.O. #	300446	membership-Scott	\$845.00	P po Total
P.O. #	300448	membership - C. Schwartz	\$845.00	P po Total
P.O. #	300538	principal dues N.D.	\$845.00	P po Total
<b>4016</b>	<b>NJSCHOOL JOBS.COM</b>		<b>\$50.00</b>	<b>Vend Total</b>
P.O. #	300087	JOB POSTING	\$50.00	po Total
<b>Z424</b>	<b>PEMBERTON SUPPLY COMPANY LLC</b>		<b>\$2,611.33</b>	<b>Vend Total</b>
P.O. #	300009	ELECTRICAL SUPPLIES	\$2,611.33	po Total
<b>2992</b>	<b>RICOH USA, INC.</b>		<b>\$19.10</b>	<b>Vend Total</b>
P.O. #	300494	COPIER OVERAGES ASST SUP & ABA	\$19.10	po Total
<b>V065</b>	<b>TBP PRODUCTIONS, LLP</b>		<b>\$450.00</b>	<b>Vend Total</b>
P.O. #	300063	Journalism class	\$450.00	po Total
<b>5605</b>	<b>TREASURER - STATE OF NEW JERSEY</b>		<b>\$85.00</b>	<b>Vend Total</b>
P.O. #	300418	SCH 4 ANNUAL MEDICAL WASTE	\$85.00	po Total
<b>9194</b>	<b>UNITED SUPPLY CORP</b>		<b>\$16.98</b>	<b>Vend Total</b>
P.O. #	350455	Teaching Aids	\$16.98	po Total
<b>T468</b>	<b>VINELAND PUBLIC CHARTER SCHOOL</b>		<b>\$1,112.00</b>	<b>Vend Total</b>
P.O. #	300025	2022-2023 CHARTER SCHOOL	\$1,112.00	P po Total
<b>5845</b>	<b>VISION SERVICE PLAN - (EA)</b>		<b>\$8,771.54</b>	<b>Vend Total</b>
P.O. #	300628	VISION BENEFITS AUG 2022	\$8,771.54	po Total
<b>0217</b>	<b>WEX INC.</b>		<b>\$20,474.98</b>	<b>Vend Total</b>
P.O. #	300603	FUEL BILL THROUGH JULY 23	\$20,474.98	po Total
<b>5592</b>	<b>WINSLOW TOWNSHIP D.M.U.</b>		<b>\$45,502.00</b>	<b>Vend Total</b>
P.O. #	300496	WATER/SEWER QTR 1	\$45,502.00	po Total
<b>6068</b>	<b>WINSLOW TWP BOARD OF ED-LUNCHROOM ACCT</b>		<b>\$220.00</b>	<b>Vend Total</b>
P.O. #	300602	CATERING SERVICES BOE JUL	\$150.00	po Total

Batch Number	8	Future Year POs	\$638,889.58	Batch Total
6068	WINSLOW TWP BOARD OF ED-LUNCHROOM ACCT		\$220.00	Vend Total
	P.O. # 300604	CATERING SERVICES NEGOTIATIONS	\$70.00	P po Total
0548	WINSLOW TWP SOLAR, LLC		\$46,787.91	Vend Total
	P.O. # 300618	JULY 2022 SOLAR	\$46,787.91	po Total
<b>Total for batch =</b>			<b>\$638,889.58</b>	

*Re 8/5/22*



Batch Number 1 Current Payments \$1,886,658.89 Batch Total

<b>1025</b>	<b>ABILITIES CENTER OF SOUTHERN NJ INC.</b>	<b>\$5,340.00</b>	<b>Vend Total</b>
P.O. #	201071 OOD#2721579030	\$2,670.00 P	po Total
P.O. #	201072 OOD#7520032130	\$2,670.00 P	po Total
<b>1205</b>	<b>ARCHBISHOP DAMIANO SCHOOL</b>	<b>\$42,312.92</b>	<b>Vend Total</b>
P.O. #	200260 OOD#6693951524	\$3,545.88 P	po Total
P.O. #	200261 OOD#4742835621	\$3,545.88 P	po Total
P.O. #	200262 OOD#5782570959	\$3,545.88 P	po Total
P.O. #	200265 OOD#8905427722	\$3,545.88 P	po Total
P.O. #	200918 OOD#3435371829	\$5,625.88 P	po Total
P.O. #	201661 OOD#4356086441	\$3,545.88 P	po Total
P.O. #	201709 OOD#9587507514	\$3,545.88 P	po Total
P.O. #	202642 OOD#3718426266	\$5,625.88 P	po Total
P.O. #	202712 OOD#4380928199	\$2,080.00 P	po Total
P.O. #	202784 OOD#4742835621	\$2,080.00 P	po Total
P.O. #	203742 OOD#3497805689	\$5,625.88 P	po Total
<b>1206</b>	<b>ARCHWAY PROGRAMS INC.</b>	<b>\$1,164.00</b>	<b>Vend Total</b>
P.O. #	205879 Transportation	\$582.00	po Total
P.O. #	205880 Transportation	\$582.00	po Total
<b>1352</b>	<b>BAYADA HOME HEALTH CARE, INC.</b>	<b>\$15,037.50</b>	<b>Vend Total</b>
P.O. #	205823 SUBSTITUTE SCHOOL NURSE	\$2,021.25 P	po Total
P.O. #	205825 SUBSTITUTE SCHOOL NURSE	\$3,465.00 P	po Total
P.O. #	205886 Nursing Services	\$1,057.50 P	po Total
P.O. #	205887 Nursing Services	\$1,257.50 P	po Total
P.O. #	205888 Nursing Services	\$1,306.25 P	po Total
P.O. #	205889 Nursing Services	\$450.00 P	po Total
P.O. #	205890 Nursing Services	\$1,113.75 P	po Total
P.O. #	205891 Nursing Services	\$1,518.75 P	po Total
P.O. #	205892 Nursing Services	\$1,485.00 P	po Total
P.O. #	205896 Nursing Services	\$427.50 P	po Total
P.O. #	205906 SUBSTITUTE SCHOOL NURSE	\$935.00 P	po Total
<b>0388</b>	<b>BERLIN BOROUGH BOARD OF EDUCATION</b>	<b>\$977.40</b>	<b>Vend Total</b>
P.O. #	201153 OOD#2278922339	\$977.40 P	po Total
<b>1421</b>	<b>BLACK HORSE PIKE REGIONAL SCHOOL DIST.</b>	<b>\$3,653.27</b>	<b>Vend Total</b>
P.O. #	205162 OOD#not in genesis	\$3,158.89 P	po Total
P.O. #	205900 OOD#4002305857	\$494.38 P	po Total
<b>1456</b>	<b>BONNIE BRAE</b>	<b>\$7,140.00</b>	<b>Vend Total</b>
P.O. #	200923 OOD#7445482135	\$7,140.00 P	po Total

Batch Number	1	Current Payments	\$1,886,658.89	Batch Total
<b>1508</b>	<b>BROOKFIELD ACADEMY</b>		<b>\$2,142.77</b>	<b>Vend Total</b>
P.O. #	205881	Professional Services	\$612.22	po Total
P.O. #	205882	Professional Services	\$218.65	P po Total
P.O. #	205883	Professional Services	\$262.38	P po Total
P.O. #	205884	Professional Services	\$1,049.52	po Total
<b>1510</b>	<b>BROOKFIELD ELEMENTARY</b>		<b>\$5,900.29</b>	<b>Vend Total</b>
P.O. #	200178	OOD#1897780132	\$5,900.29	P po Total
<b>4387</b>	<b>BSN SPORTS, LLC</b>		<b>\$440.35</b>	<b>Vend Total</b>
P.O. #	205697	Supplies for Boys Track	\$134.99	po Total
P.O. #	205699	Supplies for Boys Track	\$305.36	po Total
<b>1566</b>	<b>BURLINGTON COUNTY SPECIAL</b>		<b>\$1,830.42</b>	<b>Vend Total</b>
P.O. #	201359	OOD#6715803134	\$915.21	P po Total
P.O. #	201361	OOD#1570828658	\$915.21	P po Total
<b>1632</b>	<b>CAMDEN COUNTY EDUCATIONAL SRVCS. COMM.</b>		<b>\$1,127,361.39</b>	<b>Vend Total</b>
P.O. #	205856	APRIL TRANSPORTATION	\$236,229.03	P po Total
P.O. #	205857	MAY TRANSPORTATION	\$345,211.07	P po Total
P.O. #	205945	PL 192/193 JUNE 2022	\$5,221.84	P po Total
P.O. #	205955	AIDE IN LIEU OF TRANSPORTATION	\$338,190.83	P po Total
P.O. #	206019	JUNE BILL	\$202,508.62	P po Total
<b>1529</b>	<b>CAMDEN COUNTY TECHNICAL SCHOOLS</b>		<b>\$112,791.40</b>	<b>Vend Total</b>
P.O. #	202705	Vocational/Technical School	\$112,791.40	P po Total
<b>1689</b>	<b>CAROLINA BIOLOGICAL SUPPLY CO</b>		<b>\$1,556.40</b>	<b>Vend Total</b>
P.O. #	204689	S/R-Title I Supplies for HS	\$1,483.00	P po Total
P.O. #	205718	S/R - Title I Supplies for MS	\$73.40	P po Total
<b>T426</b>	<b>CARRILLO-COLEMAN; PRISCILLA</b>		<b>\$70.59</b>	<b>Vend Total</b>
P.O. #	204470	FOOD/SUPPLIES STUDNET EVENTS	\$70.59	po Total
<b>1732</b>	<b>CDW GOVERNMENT INC.</b>		<b>\$7,057.60</b>	<b>Vend Total</b>
P.O. #	203645	PRINTER INK/MAGNET SHEET	\$473.78	P po Total
P.O. #	204189	Main Office	\$1,681.98	P po Total
P.O. #	205483	ClassrmInstruSupplSJCA	\$3,510.00	P po Total
P.O. #	205711	principal order	\$348.68	P po Total
P.O. #	205716	S/R-Title I Supplies for MS	\$1,043.16	P po Total
<b>6053</b>	<b>CHAS S WINNER, INC</b>		<b>\$12,461.18</b>	<b>Vend Total</b>
P.O. #	205244	V10	\$12,461.18	po Total
<b>1791</b>	<b>CHERRY VALLEY TRACTOR SALES</b>		<b>\$2,056.50</b>	<b>Vend Total</b>
P.O. #	203777	REPAIRS TO BIG BLUE	\$2,056.50	po Total

Batch Number	1	Current Payments	\$1,886,658.89	Batch Total
<b>T788</b>	<b>CHICO; REGINA</b>		<b>\$373.40</b>	<b>Vend Total</b>
P.O. #	206029	REIMBURSEMENT PROF DEV	\$373.40	po Total
<b>1881</b>	<b>COMCAST CABLE</b>		<b>\$25.56</b>	<b>Vend Total</b>
P.O. #	205944	DIGITAL ADAPTER JUNE 2022 #4	\$25.56	po Total
<b>1941</b>	<b>COURIER-POST - LEGAL</b>		<b>\$176.80</b>	<b>Vend Total</b>
P.O. #	205502	PUBLIC NOTICE - AUCTION	\$128.44	po Total
P.O. #	205721	PUBLIC NOTICE-RESCHEDULED MTG	\$48.36 P	po Total
<b>2094</b>	<b>DELTA DENTAL PLAN OF NJ</b>		<b>\$316.35</b>	<b>Vend Total</b>
P.O. #	205902	COBRA MAY 2022	\$316.35	po Total
<b>2216</b>	<b>DRPA E-Z PASS</b>		<b>\$9.60</b>	<b>Vend Total</b>
P.O. #	205019	CLOSE FLEET ACCOUNT	\$9.60	po Total
<b>2358</b>	<b>EPIC ENVIRONMENTAL SERVICES LLC</b>		<b>\$2,100.00</b>	<b>Vend Total</b>
P.O. #	205775	MONITORING/AIR QUALITY TEST #3	\$2,100.00	po Total
<b>3729</b>	<b>ESS SUPPORT SERVICES, LLC</b>		<b>\$148,614.75</b>	<b>Vend Total</b>
P.O. #	205895	TA'S & NIA'S JUNE 2022	\$148,614.75	po Total
<b>2412</b>	<b>FAMILY THERAPY &amp; CONSULTATION SERVICES</b>		<b>\$220.00</b>	<b>Vend Total</b>
P.O. #	205842	E.L CLINICAL SUPERVISION	\$110.00 P	po Total
P.O. #	205843	E.N CLINICAL SUPERVISION	\$110.00 P	po Total
<b>A197</b>	<b>FIRST CHILDREN LEARNING SERVICES, LLC</b>		<b>\$3,000.00</b>	<b>Vend Total</b>
P.O. #	205555	Safety-CareTraining	\$1,350.00	po Total
P.O. #	205994	Professional Services	\$1,650.00	po Total
<b>2587</b>	<b>GARFIELD PARK ACADEMY</b>		<b>\$34,862.76</b>	<b>Vend Total</b>
P.O. #	200133	OOD#3900558995	\$2,969.01 P	po Total
P.O. #	200140	OOD#7179529752	\$2,969.01 P	po Total
P.O. #	200141	OOD#9182270030	\$2,969.01 P	po Total
P.O. #	200257	OOD#3208267024	\$2,969.01 P	po Total
P.O. #	200259	OOD#7674124613	\$4,310.01 P	po Total
P.O. #	200921	OOD#4481662331	\$4,310.01 P	po Total
P.O. #	204228	OOD#1065454552	\$14,366.70 P	po Total
<b>U172</b>	<b>GENERAL HEALTHCARE RESOURCES INC.</b>		<b>\$1,110.00</b>	<b>Vend Total</b>
P.O. #	205854	OT services rendered	\$1,110.00	po Total
<b>2665</b>	<b>GLOUCESTER CITY BOARD OF EDUCATION</b>		<b>\$2,034.40</b>	<b>Vend Total</b>
P.O. #	204977	OOD#8931319965	\$1,017.20 P	po Total
P.O. #	204978	OOD#2696760680	\$1,017.20 P	po Total
<b>2667</b>	<b>GLOUCESTER COUNTY SPECIAL SRVCS.</b>		<b>\$15,365.50</b>	<b>Vend Total</b>
P.O. #	201542	OOD#3639301713	\$192.50 P	po Total

Batch Count = 1

Batch Number	1	Current Payments	\$1,886,658.89	Batch Total
<b>2667</b>	<b>GLOUCESTER COUNTY SPECIAL SRVCS.</b>		<b>\$15,365.50</b>	<b>Vend Total</b>
P.O. #	201543	OOD#7726096352	\$192.50 P	po Total
P.O. #	201544	OOD#4810635287	\$192.50 P	po Total
P.O. #	201545	OOD#9708347217	\$192.50 P	po Total
P.O. #	201546	OOD#5315995523	\$192.50 P	po Total
P.O. #	201547	OOD#3453070610	\$192.50 P	po Total
P.O. #	201548	OOD#2714970509	\$192.50 P	po Total
P.O. #	201549	OOD#6264819586	\$192.50 P	po Total
P.O. #	201550	OOD#1359832532	\$2,733.50 P	po Total
P.O. #	201551	OOD#7873470641	\$2,733.50 P	po Total
P.O. #	201552	OOD#4090696781	\$2,733.50 P	po Total
P.O. #	201554	OOD#9065472826	\$2,733.50 P	po Total
P.O. #	204759	OOD#6908957297	\$2,733.50 P	po Total
P.O. #	205885	Professional Services	\$158.00 P	po Total
<b>2668</b>	<b>GLOUCESTER CTY. INSTITUTE OF TECHNOLOGY</b>		<b>\$9,558.00</b>	<b>Vend Total</b>
P.O. #	201265	OOD#1580415940	\$796.50 P	po Total
P.O. #	201266	OOD#9646221749	\$796.50 P	po Total
P.O. #	201267	OOD#2836151424	\$796.50 P	po Total
P.O. #	201268	OOD#2011913510	\$796.50 P	po Total
P.O. #	201269	OOD#3456374205	\$796.50 P	po Total
P.O. #	201270	OOD#7940667476	\$796.50 P	po Total
P.O. #	201271	OOD#8196272734	\$796.50 P	po Total
P.O. #	201272	OOD#9925482438	\$796.50 P	po Total
P.O. #	201273	OOD#6985596819	\$796.50 P	po Total
P.O. #	201274	OOD#2313378225	\$796.50 P	po Total
P.O. #	201275	OOD#9776530379	\$796.50 P	po Total
P.O. #	204422	No SiD# in Genesis	\$796.50 P	po Total
<b>2785</b>	<b>HAMPTON ACADEMY</b>		<b>\$6,718.92</b>	<b>Vend Total</b>
P.O. #	200263	OOD#3648277147	\$6,718.92 P	po Total
<b>2911</b>	<b>HOLLYDELL SCHOOL</b>		<b>\$95,698.20</b>	<b>Vend Total</b>
P.O. #	200147	OOD#8006275479	\$16,351.20 P	po Total
P.O. #	200154	OOD#2798838133	\$16,351.20 P	po Total
P.O. #	200155	OOD#6019065987	\$25,297.20 P	po Total
P.O. #	200157	OOD#1386752386	\$16,351.20 P	po Total
P.O. #	202306	OOD#2436716235	\$21,347.40 P	po Total
<b>T102</b>	<b>KELLY SERVICES, INC.</b>		<b>\$4,663.35</b>	<b>Vend Total</b>
P.O. #	205875	SUBSTITUTE PMT FOR W/E 6/19/22	\$4,663.35	po Total

Batch Number	1	Current Payments	\$1,886,658.89	Batch Total
<b>3222</b>	<b>KINGSWAY LEARNING CENTER</b>		<b>\$2,924.00</b>	<b>Vend Total</b>
P.O. #	205314	OOD#6046569060	\$2,924.00	po Total
<b>3269</b>	<b>KURTZ BROS. INC</b>		<b>\$667.38</b>	<b>Vend Total</b>
P.O. #	205734	Ear Buds	\$667.38	po Total
<b>T301</b>	<b>LAKESHORE LEARNING MATERIALS, LLC</b>		<b>\$1,525.50</b>	<b>Vend Total</b>
P.O. #	205779	ClassrmSupplies	\$1,525.50	po Total
<b>6336</b>	<b>LEGACY TREATMENT SERVICES, INC.</b>		<b>\$6,439.68</b>	<b>Vend Total</b>
P.O. #	200152	OOD#7468018903	\$6,439.68	P po Total
<b>3390</b>	<b>LINDENWOLD BOARD OF EDUCATION</b>		<b>\$1,040.02</b>	<b>Vend Total</b>
P.O. #	202500	OOD#1783541096	\$1,040.02	P po Total
<b>P143</b>	<b>MATHES; ELIZABETH R.</b>		<b>\$10,080.00</b>	<b>Vend Total</b>
P.O. #	205710	NOVEMBER - JUNE TRANSPORT	\$10,080.00	po Total
<b>8581</b>	<b>MCGRAW HILL EDUCATION</b>		<b>\$8,227.86</b>	<b>Vend Total</b>
P.O. #	205168	Essentials of Marketing	\$8,227.86	po Total
<b>M910</b>	<b>MERCER CTY SPECIAL SERVICE SCHOOL DISTRI</b>		<b>\$408.00</b>	<b>Vend Total</b>
P.O. #	202638	OOD#3851190289	\$408.00	P po Total
<b>3780</b>	<b>MOORESTOWN TOWNSHIP PUBLIC SCHOOLS</b>		<b>\$11,103.42</b>	<b>Vend Total</b>
P.O. #	200676	OOD#5821447055	\$11,103.42	P po Total
<b>3837</b>	<b>MUSIC &amp; ARTS CENTER INC.</b>		<b>\$119.00</b>	<b>Vend Total</b>
P.O. #	205670	Band	\$119.00	po Total
<b>4152</b>	<b>PEARSON ASSESSMENTS</b>		<b>\$3,161.60</b>	<b>Vend Total</b>
P.O. #	202700	TestingKit and protocols	\$3,161.60	po Total
<b>4266</b>	<b>PINELAND LEARNING CENTER</b>		<b>\$23,034.00</b>	<b>Vend Total</b>
P.O. #	200148	OOD#1703062003	\$7,635.00	P po Total
P.O. #	200150	OOD#3871925640	\$4,710.00	P po Total
P.O. #	205441	OOD#7522179688	\$10,689.00	P po Total
<b>0069</b>	<b>PRO-VISION SOLUTIONS, LLC</b>		<b>\$2,814.00</b>	<b>Vend Total</b>
P.O. #	205547	NON CONFORMING CAMERA	\$2,814.00	po Total
<b>4452</b>	<b>REAL REGIONAL ENRICHMENT LEARNING CENTER</b>		<b>\$10,202.90</b>	<b>Vend Total</b>
P.O. #	200553	OOD#4737047949	\$2,704.00	P po Total
P.O. #	200554	OOD#3196874515	\$4,794.90	P po Total
P.O. #	204586	OOD#2546814242	\$2,704.00	P po Total
<b>4456</b>	<b>REALLY GOOD STUFF, LLC</b>		<b>\$295.35</b>	<b>Vend Total</b>
P.O. #	205868	Classrm supply special ed	\$295.35	po Total
<b>4696</b>	<b>SAFETY-KLEEN SYSTEMS, INC.</b>		<b>\$700.69</b>	<b>Vend Total</b>
P.O. #	205050	SEPTEMBER; DECEMBER; MARCH	\$700.69	po Total

Batch Number	1	Current Payments	\$1,886,658.89	Batch Total
<b>4696</b>	<b>SAFETY-KLEEN SYSTEMS, INC.</b>		<b>\$700.69</b>	<b>Vend Total</b>
P.O. #	205050	SEPTEMBER; DECEMBER; MARCH	\$700.69	po Total
<b>4796</b>	<b>SCHOOL HEALTH CORPORATION</b>		<b>\$2,880.06</b>	<b>Vend Total</b>
P.O. #	203160	HS Nurse Supplies	\$2,880.06	po Total
<b>4810</b>	<b>SCHOOL SPECIALTY, LLC</b>		<b>\$5,711.22</b>	<b>Vend Total</b>
P.O. #	204974	backpack items	\$1,704.97	P po Total
P.O. #	205533	Teacher of the Year	\$501.67	P po Total
P.O. #	205637	S/R-Supplies for ESY	\$930.89	P po Total
P.O. #	205685	PROGRAM SUPPLIES	\$137.65	P po Total
P.O. #	205798	Teacher Chairs-Book Shelf-ETC	\$2,436.04	P po Total
<b>4904</b>	<b>SHERWIN WILLIAMS COMPANY</b>		<b>\$1,897.00</b>	<b>Vend Total</b>
P.O. #	205727	PAINT FOR THE DISTRICT	\$1,897.00	po Total
<b>C700</b>	<b>SIEVERS; NICOLE</b>		<b>\$1,000.00</b>	<b>Vend Total</b>
P.O. #	206024	AIDE IN LIEU OF TRANSPORTAITON	\$1,000.00	po Total
<b>6560</b>	<b>SODEXO INC. &amp; AFFILIATES</b>		<b>\$300.00</b>	<b>Vend Total</b>
P.O. #	205987	CATERING SERVICES JUNE 2022-HS	\$150.00	po Total
P.O. #	205988	CATERING SERVICES JUNE 2022-MS	\$150.00	po Total
<b>5158</b>	<b>STAPLES CONTRACT &amp; COMMERCIAL LLC</b>		<b>\$3,133.21</b>	<b>Vend Total</b>
P.O. #	205101	End of year supplies	\$2,107.92	P po Total
P.O. #	205405	Copy Paper	\$948.30	P po Total
P.O. #	205830	Main Office	\$76.99	P po Total
<b>6380</b>	<b>STAR PEDIATRIC HOME CARE AGENCY</b>		<b>\$17,305.00</b>	<b>Vend Total</b>
P.O. #	205908	Nursing Services	\$2,036.25	po Total
P.O. #	205909	Nursing Services	\$3,082.50	po Total
P.O. #	205973	Nursing Services	\$3,460.00	po Total
P.O. #	205975	Nursing Services	\$4,540.00	po Total
P.O. #	205976	Nursing Services	\$4,186.25	po Total
<b>3119</b>	<b>T &amp; T SUPPLY CO.</b>		<b>\$1,539.94</b>	<b>Vend Total</b>
P.O. #	203584	HVAC SUPPLIES	\$1,539.94	po Total
<b>5462</b>	<b>THE PRESS OF ATLANTIC CITY</b>		<b>\$237.84</b>	<b>Vend Total</b>
P.O. #	205419	PN - ADDENDUM CC RFP 2022-01	\$18.40	po Total
P.O. #	205503	PUBLIC NOTICE - BID 2022-22	\$51.20	po Total
P.O. #	205504	PUBLIC NOTICE BID 2022-23	\$51.20	po Total
P.O. #	205505	PUBLIC NOTICE - AUCTION	\$105.84	po Total
P.O. #	205724	PUBLIC NOTICE-RESCHEDULED MTG	\$11.20	P po Total

Batch Count = 1

Batch Number	1	Current Payments	\$1,886,658.89	Batch Total
<b>5835</b>	<b>VINELAND BOARD OF EDUCATION</b>		<b>\$7,059.50</b>	<b>Vend Total</b>
P.O. #	203829	OOD#9857627978	\$7,059.50 P	po Total
<b>5845</b>	<b>VISION SERVICE PLAN - (EA)</b>		<b>\$62.32</b>	<b>Vend Total</b>
P.O. #	205903	COBRA MAY 2022	\$62.32	po Total
<b>5864</b>	<b>W. W. GRAINGER INC.</b>		<b>\$2,636.75</b>	<b>Vend Total</b>
P.O. #	205739	S/R - Title I Supplies for #1	\$2,636.75	po Total
<b>5887</b>	<b>WALLER; DARCHELLE</b>		<b>\$31.20</b>	<b>Vend Total</b>
P.O. #	205844	STAFF REIMBURSEMENT	\$31.20	po Total
<b>6065</b>	<b>WINSLOW TOWNSHIP</b>		<b>\$1,050.00</b>	<b>Vend Total</b>
P.O. #	205497	POLICE SECURITY	\$420.00 P	po Total
P.O. #	205628	POLICE COVERAGE BOARD MEETING	\$420.00 P	po Total
P.O. #	205981	POLICE SECURITY BOARD MEETING	\$210.00 P	po Total
<b>6068</b>	<b>WINSLOW TWP BOARD OF ED-LUNCHROOM ACCT</b>		<b>\$300.00</b>	<b>Vend Total</b>
P.O. #	205468	CATERING SERVICES BOE JUNE	\$300.00	po Total
<b>6110</b>	<b>WOLFINGTON BODY CO INC</b>		<b>\$64,744.30</b>	<b>Vend Total</b>
P.O. #	203564	BUS #64	\$8,860.32 P	po Total
P.O. #	203773	BUS #M23	\$14,782.63	po Total
P.O. #	204826	BUS #23 FRONT END REPAIR	\$2,067.02 P	po Total
P.O. #	204955	ACTUATOR	\$2,034.91 P	po Total
P.O. #	204960	HOSE; SHOE; 70MM;	\$7,797.25 P	po Total
P.O. #	205148	BUS 78	\$14,952.85	po Total
P.O. #	205149	STOCK PARTS	\$6,891.62 P	po Total
P.O. #	205152	SUPPLIES	\$462.02 P	po Total
P.O. #	205242	TUBES	\$2,907.65 P	po Total
P.O. #	205385	BUS 57 REPLACE ECU & CONNECTOR	\$3,306.63 P	po Total
P.O. #	205426	MIRROR	\$96.40 P	po Total
P.O. #	205435	SENSORS	\$585.00 P	po Total
<b>6166</b>	<b>Y.A.L.E. SCHOOL INC.</b>		<b>\$4,235.70</b>	<b>Vend Total</b>
P.O. #	205161	OOD#3505915940	\$4,235.70	po Total
<b>6167</b>	<b>Y.A.L.E.SCHOOL SOUTHEAST INC</b>		<b>\$8,000.33</b>	<b>Vend Total</b>
P.O. #	200204	OOD#7527212616	\$8,000.33 P	po Total
<b>6650</b>	<b>ZALLIE SUPERMARKETS</b>		<b>\$7,649.55</b>	<b>Vend Total</b>
P.O. #	201204	PROGRAM SUPPLIES FOR EL	\$432.48 P	po Total
P.O. #	201206	PROGRAM SUPPLIES EN	\$296.03 P	po Total
P.O. #	202239	SBYSP GRANT PROGRAM SUPPLIES	\$143.76 P	po Total
P.O. #	202265	SBYSP GRANT PROGRAM SUPPLIES	\$35.54 P	po Total

Batch Number 1 Current Payments \$1,886,658.89 Batch Total

Batch Number	Current Payments	\$1,886,658.89	Batch Total
<b>6650</b>	<b>ZALLIE SUPERMARKETS</b>	<b>\$7,649.55</b>	<b>Vend Total</b>
P.O. # 202474	Food for classes	\$50.86 P	po Total
P.O. # 202559	SBYSP GRANT PROGRAM SUPPLIES	\$32.33 P	po Total
P.O. # 202648	Food for classes	\$254.46 P	po Total
P.O. # 202649	Food for classes	\$96.74 P	po Total
P.O. # 203012	Food for classes	\$87.17 P	po Total
P.O. # 203015	Food for classes	\$102.44 P	po Total
P.O. # 203016	Food for classes	\$138.51 P	po Total
P.O. # 203017	Food for classes	\$124.06 P	po Total
P.O. # 203018	Food for classes	\$191.06 P	po Total
P.O. # 203243	Food for classes	\$192.20 P	po Total
P.O. # 203367	E.N. GROUP SUPPLIES	\$56.11 P	po Total
P.O. # 203371	E.L.GROUP Supplies	\$113.66 P	po Total
P.O. # 203378	Food for classes	\$160.32 P	po Total
P.O. # 203379	Food for classes	\$151.51 P	po Total
P.O. # 203651	Food for classes	\$75.49 P	po Total
P.O. # 203652	Food for classes	\$88.86 P	po Total
P.O. # 203653	Food for classes	\$85.23 P	po Total
P.O. # 203655	Food for classes	\$48.73 P	po Total
P.O. # 203893	Food for classes	\$78.16 P	po Total
P.O. # 203895	Food for classes	\$158.99 P	po Total
P.O. # 204017	Food for classes	\$48.37 P	po Total
P.O. # 204018	Food for classes	\$92.07 P	po Total
P.O. # 204019	Food for classes	\$49.79 P	po Total
P.O. # 204020	Food for classes	\$128.75 P	po Total
P.O. # 204112	Food for classes	\$136.33 P	po Total
P.O. # 204117	Food for classes	\$104.60 P	po Total
P.O. # 204335	E.N GROUP SUPPLIES	\$59.44 P	po Total
P.O. # 204340	E.L GROUP SUPPLIES	\$110.84 P	po Total
P.O. # 204439	Food for classes	\$290.23 P	po Total
P.O. # 204451	Food for classes	\$71.49 P	po Total
P.O. # 204455	Food for classes	\$52.37 P	po Total
P.O. # 204456	Food for classes	\$198.84 P	po Total
P.O. # 204513	E.L GROUP SUPPLIES	\$152.19 P	po Total
P.O. # 204515	Food for classes	\$59.87 P	po Total
P.O. # 204516	Food for classes	\$209.72 P	po Total
P.O. # 204846	Food for classes	\$144.04 P	po Total



Batch Number 1      Current Payments      \$1,886,658.89      Batch Total

---

6650 ZALLIE SUPERMARKETS		\$7,649.55	Vend Total
P.O. #	204872 E.N GROUP SUPPLIES	\$55.05 P	po Total
P.O. #	204873 E.L GROUP SUPPLIES	\$144.89 P	po Total
P.O. #	205001 FOOD FOR CLASSES	\$116.41 P	po Total
P.O. #	205002 FOOD FOR CLASSES	\$50.77 P	po Total
P.O. #	205038 FOOD FOR CLASSES	\$150.42 P	po Total
P.O. #	205039 FOOD FOR CLASSES	\$158.89 P	po Total
P.O. #	205277 E.N GROUP SUPPLIES	\$27.41 P	po Total
P.O. #	205345 FOOD FOR CLASSES	\$168.38 P	po Total
P.O. #	205346 FOOD FOR CLASSES	\$131.98 P	po Total
P.O. #	205347 FOOD FOR CLASSES	\$146.11 P	po Total
P.O. #	205403 PEER LEADERSHIP CONF. LUNCH	\$240.30 P	po Total
P.O. #	205498 FOOD FOR CLASSES	\$53.60 P	po Total
P.O. #	205499 FOOD FOR CLASSES	\$106.17 P	po Total
P.O. #	205506 FOOD FOR CLASSES	\$193.48 P	po Total
P.O. #	205572 STUDENT PROGRAM SUPPLIES	\$37.37 P	po Total
P.O. #	205832 PROGRAM SUPPLIES	\$324.42 P	po Total
P.O. #	205835 PROGRAM SUPPLIES	\$218.85 P	po Total
P.O. #	205838 PROGRAM SUPPLIES	\$84.72 P	po Total
P.O. #	205839 PROGRAM SUPPLIES	\$136.69 P	po Total

**Total for batch = \$1,886,658.89**

*7.28.22*

Batch Number	8	Future Year POs	\$197,093.97	Batch Total
<b>1231</b>		<b>ASSOC FOR SUPERVISION &amp; CURR. DEV.</b>	<b>\$239.00</b>	<b>Vend Total</b>
	P.O. #	300324 membership	\$239.00	po Total
<b>D214</b>		<b>ASSOCIATION FOR MIDDLE LEVEL EDUCATION</b>	<b>\$49.99</b>	<b>Vend Total</b>
	P.O. #	300109 Ms. N. membership	\$49.99	po Total
<b>T247</b>		<b>BERG; LAUREN</b>	<b>\$84.00</b>	<b>Vend Total</b>
	P.O. #	300348 Assignors Fee for Field Hockey	\$84.00	po Total
<b>J130</b>		<b>BIG TEAMS LLC</b>	<b>\$1,000.00</b>	<b>Vend Total</b>
	P.O. #	300318 Annual Fee for Big Teams	\$1,000.00	po Total
<b>1604</b>		<b>CALIFON CONSULTANTS LLC</b>	<b>\$1,395.00</b>	<b>Vend Total</b>
	P.O. #	300074 ANNUAL SENIORITY SOFTWARE	\$1,395.00	po Total
<b>1881</b>		<b>COMCAST CABLE</b>	<b>\$174.72</b>	<b>Vend Total</b>
	P.O. #	300293 DIGITAL ADAPTERS ADMIN	\$25.56 P	po Total
	P.O. #	300476 SUPERINTENDENT'S OFFICE	\$149.16 P	po Total
<b>1894</b>		<b>COMPUTER SOLUTIONS INC</b>	<b>\$2,926.00</b>	<b>Vend Total</b>
	P.O. #	300429 CSI SOFTWARE-JULY 2022	\$1,463.00	po Total
	P.O. #	300430 CSI SOFTWARE-AUGUST 2022	\$1,463.00	po Total
<b>1901</b>		<b>CONNER STRONG &amp; BUCKELEW CO. LLC</b>	<b>\$8,333.32</b>	<b>Vend Total</b>
	P.O. #	300214 PROFESSIONAL SERVICES	\$8,333.32 P	po Total
<b>1941</b>		<b>COURIER-POST - LEGAL</b>	<b>\$260.88</b>	<b>Vend Total</b>
	P.O. #	300018 PUBLIC NOTICE - EUS INS. AWARD	\$77.40	po Total
	P.O. #	300019 PUBLIC NOTICE - PROF SPEC ED	\$74.32 P	po Total
	P.O. #	300030 PUBLIC NOTICE - SUBSTITUTES	\$55.40 P	po Total
	P.O. #	300032 PUBLIC NOTICE - EUS INS BROKER	\$53.76 P	po Total
<b>2094</b>		<b>DELTA DENTAL PLAN OF NJ</b>	<b>\$48,901.43</b>	<b>Vend Total</b>
	P.O. #	300055 DENTAL BENEFITS - JULY 2022	\$48,901.43	po Total
<b>2101</b>		<b>DEMCO INC.</b>	<b>\$17.97</b>	<b>Vend Total</b>
	P.O. #	350332 Library Supplies	\$17.97	po Total
<b>2278</b>		<b>EDITORIAL PROJECTS IN EDUCATION, INC.</b>	<b>\$97.00</b>	<b>Vend Total</b>
	P.O. #	300158 Print & Premium Digital	\$97.00	po Total
<b>2288</b>		<b>EDUCATIONAL DATA SERVICES INC.</b>	<b>\$3,798.78</b>	<b>Vend Total</b>
	P.O. #	300130 BID PROGRAM 2022/2023	\$3,798.78 P	po Total
<b>0737</b>		<b>EDUCATIONAL NETWORKS, INC.</b>	<b>\$6,600.00</b>	<b>Vend Total</b>
	P.O. #	300152 WEB CONTENT MANAGEMENT	\$6,600.00	po Total
<b>2303</b>		<b>EDVOCATE INC.</b>	<b>\$2,521.00</b>	<b>Vend Total</b>
	P.O. #	300142 MONITORING SERVICES	\$2,521.00 P	po Total

Batch Number	8	Future Year POs	\$197,093.97	Batch Total
<b>5408</b>	<b>FALLS GROUP LLC</b>		<b>\$1,175.00</b>	<b>Vend Total</b>
P.O. #	300233	EAGLES NEST FIELD TRIP	\$1,175.00	po Total
<b>2462</b>	<b>FLAGSHIP DENTAL PLANS</b>		<b>\$372.41</b>	<b>Vend Total</b>
P.O. #	300048	FLAGSHIP DENTAL PLAN 22-23 YR	\$372.41 P	po Total
<b>F372</b>	<b>GARDEN STATE SCHOLASTIC PRESS ASSN</b>		<b>\$95.00</b>	<b>Vend Total</b>
P.O. #	300138	journalism	\$95.00	po Total
<b>2609</b>	<b>GENESIS EDUCATIONAL SERVICES</b>		<b>\$35,895.50</b>	<b>Vend Total</b>
P.O. #	300143	ANNUAL PLAN	\$35,895.50	po Total
<b>2975</b>	<b>IANNACO; KRISTINE</b>		<b>\$29.75</b>	<b>Vend Total</b>
P.O. #	300125	CRIMINAL ARCHIVE REIMB	\$29.75	po Total
<b>3287</b>	<b>LAKESHORE LEARNING MATERIAL</b>		<b>\$114.65</b>	<b>Vend Total</b>
P.O. #	350465	Teaching Aids	\$94.86	po Total
P.O. #	350467	Teaching Aids	\$19.79 P	po Total
<b>3676</b>	<b>MENC:NAT ASSOC FOR MUSIC EDUCATION</b>		<b>\$387.00</b>	<b>Vend Total</b>
P.O. #	300222	music teachers	\$387.00	po Total
<b>X866</b>	<b>MILLENNIUM SKATE WORLD</b>		<b>\$404.13</b>	<b>Vend Total</b>
P.O. #	300229	EAGLES NEST FIELD TRIP	\$404.13	po Total
<b>6450</b>	<b>NASSP</b>		<b>\$770.00</b>	<b>Vend Total</b>
P.O. #	300114	NJHS membership S. N.	\$385.00 P	po Total
P.O. #	300331	NHS MEMBERSHIP	\$385.00 P	po Total
<b>A343</b>	<b>NEW JERSEY MOTOR VEHICLE COMMISSION</b>		<b>\$1,800.00</b>	<b>Vend Total</b>
P.O. #	300112	REGISTRATIONS	\$450.00	po Total
P.O. #	300116	REGISTRATION	\$450.00	po Total
P.O. #	300133	REGISTRATIONS	\$450.00	po Total
P.O. #	300202	REGISTRATIONS	\$450.00	po Total
<b>3958</b>	<b>NEW JERSEY SCHOOL BOARDS ASSOCIATION</b>		<b>\$25,329.57</b>	<b>Vend Total</b>
P.O. #	300145	NJSBA DUES 2022-2023	\$25,329.57	po Total
<b>8353</b>	<b>NJ ASSOCIATION FOR MIDDLE LEVEL EDUC.</b>		<b>\$125.00</b>	<b>Vend Total</b>
P.O. #	300111	school membership	\$125.00	po Total
<b>3997</b>	<b>NJ PRINCIPALS AND SUPERVISORS ASSOC.</b>		<b>\$7,074.00</b>	<b>Vend Total</b>
P.O. #	300323	membership	\$1,170.00 P	po Total
P.O. #	300344	MEMBERSHIP FEES	\$5,904.00 P	po Total
<b>4016</b>	<b>NJSCHOOL JOBS.COM</b>		<b>\$50.00</b>	<b>Vend Total</b>
P.O. #	300051	JOB POSTING	\$50.00	po Total
<b>6466</b>	<b>NJSIAA</b>		<b>\$2,500.00</b>	<b>Vend Total</b>
P.O. #	300319	NJSIAA Annual Dues	\$2,500.00	po Total

Batch Number	8	Future Year POs	\$197,093.97	Batch Total
<b>4118</b>	<b>PARK; DONNA</b>		<b>\$57.00</b>	<b>Vend Total</b>
	P.O. # 300205	CDL RENEWAL	\$57.00	po Total
<b>0559</b>	<b>PROJECT LEAD THE WAY, INC.</b>		<b>\$950.00</b>	<b>Vend Total</b>
	P.O. # 300134	participation fee	\$950.00	po Total
<b>4456</b>	<b>REALLY GOOD STUFF, LLC</b>		<b>\$65.38</b>	<b>Vend Total</b>
	P.O. # 350461	Teaching Aids	\$12.60	P po Total
	P.O. # 350473	Teaching Aids	\$32.00	P po Total
	P.O. # 350479	Teaching Aids	\$6.78	P po Total
	P.O. # 350487	Teaching Aids	\$14.00	P po Total
<b>2992</b>	<b>RICOH USA, INC.</b>		<b>\$14,867.17</b>	<b>Vend Total</b>
	P.O. # 300056	COPIER LEASE 22/23 CONTRACT	\$13,568.77	P po Total
	P.O. # 300058	COPY/PRINTER ABA/ASST SUP	\$985.56	P po Total
	P.O. # 300297	COPIER LEASE 22-23 BA/HR	\$312.84	P po Total
<b>T261</b>	<b>THE LAMP SAFE, LCC</b>		<b>\$2,735.75</b>	<b>Vend Total</b>
	P.O. # 300069	LAMP RECYCLING	\$407.75	po Total
	P.O. # 300075	LAMP RECYCLING	\$2,328.00	po Total
<b>5446</b>	<b>THE OMNI GROUP</b>		<b>\$9,916.00</b>	<b>Vend Total</b>
	P.O. # 300144	2022-23 403(b) COMPLIANCE	\$9,916.00	po Total
<b>5583</b>	<b>TOUCHDOWN CLUB OF SOUTH JERSEY</b>		<b>\$100.00</b>	<b>Vend Total</b>
	P.O. # 300345	Membership Dues for TCOSJ	\$100.00	po Total
<b>5812</b>	<b>VERIZON</b>		<b>\$262.21</b>	<b>Vend Total</b>
	P.O. # 300533	JULY 2022 (4) LINES	\$262.21	po Total
<b>5845</b>	<b>VISION SERVICE PLAN - (EA)</b>		<b>\$8,974.08</b>	<b>Vend Total</b>
	P.O. # 300103	VISION BENEFITS JULY 2022	\$8,974.08	po Total
<b>5968</b>	<b>WEST MUSIC COMPANY</b>		<b>\$33.99</b>	<b>Vend Total</b>
	P.O. # 350527	Music	\$33.99	po Total
<b>0882</b>	<b>XTEL COMMUNICATIONS, INC.</b>		<b>\$6,611.29</b>	<b>Vend Total</b>
	P.O. # 300036	INTERNET/PHONE SERVICE JULY	\$6,611.29	po Total
<b>Total for batch =</b>			<b>\$197,093.97</b>	

*OK  
7.28.22*

Batch Number 3

Before/After School

\$100.64

Batch Total

**3729** ESS SUPPORT SERVICES, LLC

\$100.64 Vend Total

P.O. # 205905 June 2022 payroll part 3

\$100.64 po Total

**Total for batch =**

**\$100.64**

*Handwritten signature and date: 7.28.22*

Batch Number 4 Food Service \$179,899.83 Batch Total

---

<b>B190</b>	<b>FIRE AND SECURITY TECHNOLOGIES</b>	<b>\$880.52</b>	<b>Vend Total</b>
P.O. #	205378 HOOD INSPECTION	\$880.52	po Total
<b>2895</b>	<b>HOBART CORP.</b>	<b>\$281.00</b>	<b>Vend Total</b>
P.O. #	202032 SERVICE DISHWASHER SCH# 6	\$281.00	po Total
<b>2992</b>	<b>RICOH USA, INC.</b>	<b>\$156.42</b>	<b>Vend Total</b>
P.O. #	300289 COPIER/PRINTER RENTAL FOR SODE	\$156.42 P	po Total
<b>6560</b>	<b>SODEXO INC. &amp; AFFILIATES</b>	<b>\$173,660.96</b>	<b>Vend Total</b>
P.O. #	205956 JUNE 2022 SERVICES	\$173,660.96	po Total
<b>3652</b>	<b>THE CLM GROUP, INC</b>	<b>\$4,920.93</b>	<b>Vend Total</b>
P.O. #	300155 MPOWER ANNUAL SUBSCRIPTION	\$4,920.93	po Total

**Total for batch = \$179,899.83**

*Handwritten:* 179,899.83

Check Journal  
Rec and Unrec checks

Winslow Twp School District  
Hand and Machine checks

07/28/22 11:39

Starting date 7/1/2021

Ending date 7/28/2022

Chk#	Date	Rec date	Code	Vendor name	Check Comment	Check amount
956878	07/15/22		6462	NJASC / SOUTHERN OFFICE		50.00

**Fund Totals**

96	STUDENT ACTIVITY	\$50.00
	Total for all checks listed	\$50.00

*[Handwritten signature]*  
7.28.22

Prepared and submitted by: \_\_\_\_\_  
Board Secretary

\_\_\_\_\_  
Date

Check Journal  
Rec and Unrec checks

Winslow Twp School District  
Hand and Machine checks

07/25/22 13:43

Starting date 7/15/2022 Ending date 7/15/2022

Chk#	Date	Rec date	Code	Vendor name	Check Comment	Check amount
900613	H 07/15/22		4018	NJSHBP	ID# 16800 JUL	363.98
900614	H 07/15/22		5173	STATE OF NJ DIV OF PENSIONS AND BENEFITS	ID# 15300 JUL	1,007,437.14

**Fund Totals**

11	GENERAL CURRENT EXPENSE	\$1,007,437.14
95	TRANSITION	\$363.98
	Total for all checks listed	\$1,007,801.12

*[Handwritten signature]*  
7.28.22

Prepared and submitted by: \_\_\_\_\_  
Board Secretary

\_\_\_\_\_ Date



Check Journal  
Rec and Unrec checks

Winslow Twp School District  
Hand and Machine checks

25 of 26

Page 1 of 1

07/21/22 13:30

Starting date 7/21/2022

Ending date 7/21/2022

Chk#	Date	Rec date	Code	Vendor name	Check Comment	Check amount
140424	07/21/22		5387	THE COLLEGE OF NEW JERSEY		100.00

**Fund Totals**

11	GENERAL CURRENT EXPENSE	\$100.00
	Total for all checks listed	\$100.00

7.28.22  
*[Signature]*

Prepared and submitted by: \_\_\_\_\_  
Board Secretary Date

Check Journal  
Rec and Unrec checks

Winslow Twp School District  
Hand and Machine checks

08/03/22 08:25

Starting date 8/3/2022

Ending date 8/3/2022

Chk#	Date	Rec date	Code	Vendor name	Check Comment	Check amount
140553	08/03/22		8485	NJ MVC		180.00

**Fund Totals**

11	GENERAL CURRENT EXPENSE	\$180.00
	Total for all checks listed	\$180.00

*me 8/5/22*

Prepared and submitted by: \_\_\_\_\_ Date \_\_\_\_\_  
Board Secretary



# New Jersey Department of Education

## Annual Toilet Room Facilities for Early Intervention, Pre-Kindergarten and Kindergarten Classrooms 2022-2023 School Year

### ONE FORM PER SCHOOL BUILDING

District/ County: Winslow Twp/Camden Co. \_\_\_\_\_ School: School #1

List Room(s) Number/Name: Rooms 7, 14 & 15

Our school district elects to use the alternate method of compliance in accordance with N.J.A.C. 6A:26-6.3. In lieu of individual toilet rooms in each classroom, toilet rooms may be provided adjacent to or outside the classroom, if the following criteria are satisfactorily addressed:

- No child or group of children shall be left unsupervised at any time when traveling to or from the facilities. Provisions shall be made for adult supervision in a manner that will not infringe upon instructional time;
- Toilet facilities shall be readily accessible and the toilet room and signage shall be visible to the child from the classroom door;
- Toilet facilities shall be provided for both boys and girls and shall meet the requirements of NJAC 6A:26-6.3(h)4ii.

District alternate method of compliance pursuant to N.J.A.C. 6A:26-6.3(h)4iii:

- Directional and additional signage in school hallways/outside classroom per toilet room location. Toilet facilities are readily accessible and signage is visible to the child from their classroom.
- Students are accompanied by their teacher during scheduled bathroom breaks in the mornings and during the afternoons, after lunch.
- Toilet facilities are provided for both boys and girls, each assures privacy for the student.

Board of Education has approved this alternate method of compliance on 8.10.22 \_\_\_\_\_  
Date

\*\*\*\*Attach Copy of Board Resolution\*\*\*\*

I certify that all requirements of N.J.A.C. 6A:26-6.3 and/or 6.4 have been met.

Superintendent of Schools: Z. Morris Potrat Date: 7.15.22

School Business Administrator: [Signature] Date: 7.15.22

For County Use Only

Approved: \_\_\_\_\_

Not Approved: \_\_\_\_\_

\_\_\_\_\_  
Executive County Superintendent

\_\_\_\_\_  
Date



# New Jersey Department of Education

## Annual Toilet Room Facilities for Early Intervention, Pre-Kindergarten and Kindergarten Classrooms 2022-2023 School Year

### ONE FORM PER SCHOOL BUILDING

District/ County: Winslow Twp/Camden Co. \_\_\_\_\_ School: School #2

List Room(s) Number/Name: Rooms 7, 8, 9 & 12

Our school district elects to use the alternate method of compliance in accordance with N.J.A.C. 6A:26-6.3. In lieu of individual toilet rooms in each classroom, toilet rooms may be provided adjacent to or outside the classroom, if the following criteria are satisfactorily addressed:

- No child or group of children shall be left unsupervised at any time when traveling to or from the facilities. Provisions shall be made for adult supervision in a manner that will not infringe upon instructional time;
- Toilet facilities shall be readily accessible and the toilet room and signage shall be visible to the child from the classroom door;
- Toilet facilities shall be provided for both boys and girls and shall meet the requirements of NJAC 6A:26-6.3(h)4ii.

District alternate method of compliance pursuant to N.J.A.C. 6A:26-6.3(h)4iii:

- Directional and additional signage in school hallways/outside classroom per toilet room location. Toilet facilities are readily accessible and signage is visible to the child from their classroom.
- Students are accompanied by their teacher during scheduled bathroom breaks in the mornings and during the afternoons, after lunch.
- Toilet facilities are provided for both boys and girls, each assures privacy for the student.

Board of Education has approved this alternate method of compliance on 8.10.22 \_\_\_\_\_  
Date

\*\*\*\*Attach Copy of Board Resolution\*\*\*\*

I certify that all requirements of N.J.A.C. 6A:26-6.3 and/or 6.4 have been met.

Superintendent of Schools: [Signature] Date: 7.15.22

School Business Administrator: [Signature] Date: 7.15.22

For County Use Only

Approved: \_\_\_\_\_

Not Approved: \_\_\_\_\_

Executive County Superintendent

Date



# New Jersey Department of Education

## Annual Toilet Room Facilities for Early Intervention, Pre-Kindergarten and Kindergarten Classrooms 2022-2023 School Year

### ONE FORM PER SCHOOL BUILDING

District/ County: Winslow Twp/Camden Co. \_\_\_\_\_ School: School #3

List Room(s) Number/Name: Rooms 12, 13 & 19

Our school district elects to use the alternate method of compliance in accordance with N.J.A.C. 6A:26-6.3. In lieu of individual toilet rooms in each classroom, toilet rooms may be provided adjacent to or outside the classroom, if the following criteria are satisfactorily addressed:

- No child or group of children shall be left unsupervised at any time when traveling to or from the facilities. Provisions shall be made for adult supervision in a manner that will not infringe upon instructional time;
- Toilet facilities shall be readily accessible and the toilet room and signage shall be visible to the child from the classroom door;
- Toilet facilities shall be provided for both boys and girls and shall meet the requirements of NJAC 6A:26-6.3(h)4ii.

District alternate method of compliance pursuant to N.J.A.C. 6A:26-6.3(h)4iii:

- Directional and additional signage in school hallways/outside classroom per toilet room location. Toilet facilities are readily accessible and signage is visible to the child from their classroom.
- Students are accompanied by their teacher during scheduled bathroom breaks in the mornings and during the afternoons, after lunch.
- Toilet facilities are provided for both boys and girls, each assures privacy for the student.

Board of Education has approved this alternate method of compliance on 8.10.22 \_\_\_\_\_  
Date

\*\*\*\*Attach Copy of Board Resolution\*\*\*\*

I certify that all requirements of N.J.A.C. 6A:26-6.3 and/or 6.4 have been met.

Superintendent of Schools: J. Wayne Potrat Date: 7.15.22

School Business Administrator: [Signature] Date: 7.15.22

For County Use Only

Approved: \_\_\_\_\_

Not Approved: \_\_\_\_\_

\_\_\_\_\_  
Executive County Superintendent

\_\_\_\_\_  
Date



# New Jersey Department of Education

## Application for Dual Use of Educational Space 2022-2023 School Year

This form is to be used when educational space is required but limited. Dual use of educational spaces is permitted under limited circumstances wherein two small group classes of similar nature separated by a movable divider are operating simultaneously within the same educational space. Permission to operate a dual use educational space must be obtained from the Executive County Superintendent Annually.

District/ County: Winslow Twp SD/ Camden Co. School/Building: School #2\_\_\_\_\_

Room Number/ Name: C State Approved Use: Yes\_\_\_\_\_

Requested Use Group One: Occupational Therapy # Students 2 # Teachers 1\_\_\_\_\_

Requested Use Group Two: Physical Therapy # Students 2 # Teachers 1\_\_\_\_\_

Description of movable divider used (e.g. height, length, bookshelf, acoustical, etc.): Please see the attached schematic.

The Board of Education approved the Dual Use application on 8.10.22  
(Date)

**\*\*\*Attach Copy of Board Resolution \*\*\***

### SUBMIT THE FOLLOWING WITH THIS APPLICATION:

- A sketch/photo of the space showing room size, location of exit doors, fire detection systems, ventilation systems and divider.
- Attach Copy of Board Resolution

Superintendent of Schools: [Signature] Date: 7.15.22\_\_\_\_\_

School Business Administrator: [Signature] Date: 7.15.22\_\_\_\_\_

### For County Office Use Only

Inspected by: \_\_\_\_\_ Date: \_\_\_\_\_

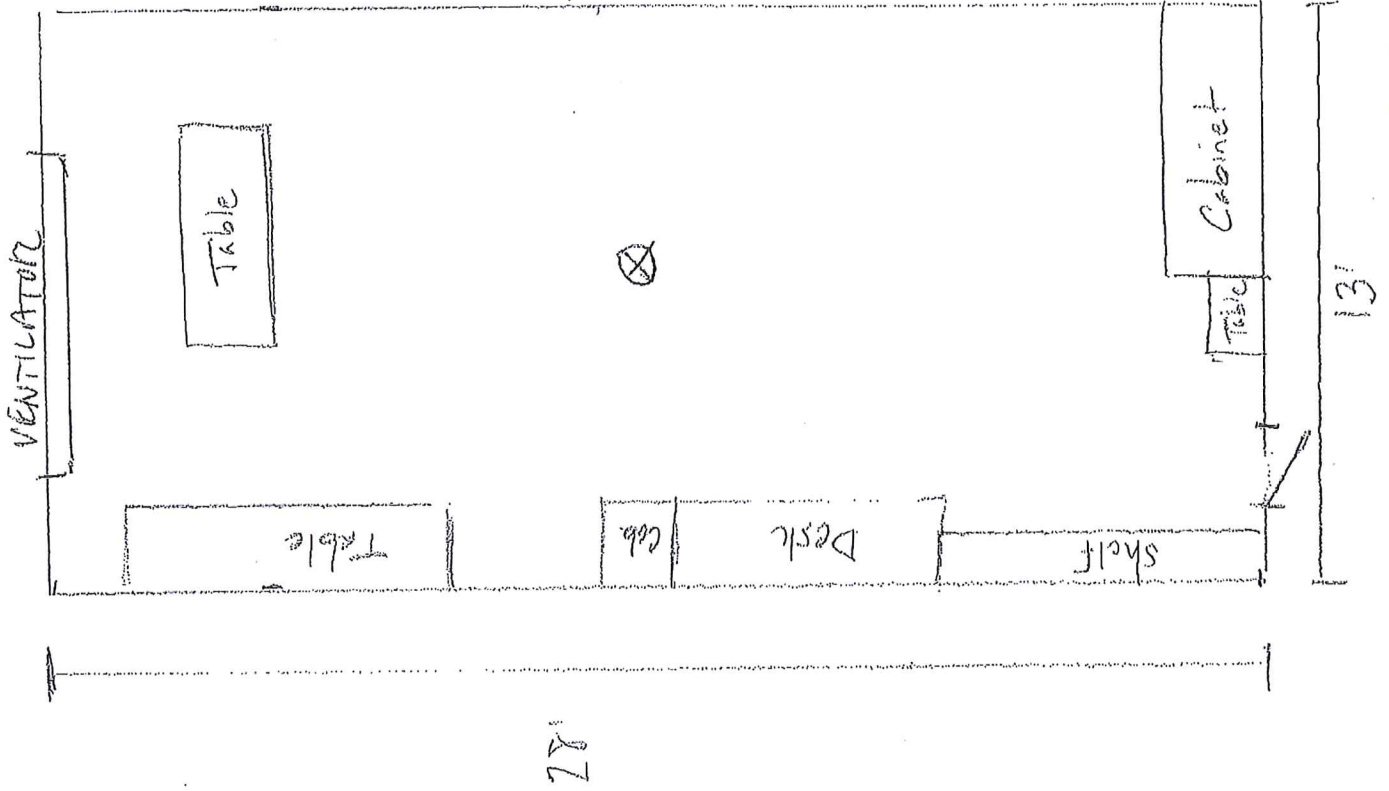
Approved as is: \_\_\_\_\_ Not approved: \_\_\_\_\_ Approved subject to the following conditions: \_\_\_\_\_

Executive County Superintendent: \_\_\_\_\_ Date: \_\_\_\_\_

School #2  
Rm. C

Scale 1"=4'

⊗ = SMOKE DETECTOR





# New Jersey Department of Education

## Application for Dual Use of Educational Space 2022-2023 School Year

This form is to be used when educational space is required but limited. Dual use of educational spaces is permitted under limited circumstances wherein two small group classes of similar nature separated by a movable divider are operating simultaneously within the same educational space. Permission to operate a dual use educational space must be obtained from the Executive County Superintendent Annually.

District/ County: Winslow Twp SD/ Camden Co. School/Building: School #2\_\_\_\_\_

Room Number/ Name: Library State Approved Use: Yes\_\_\_\_\_

Requested Use Group One: Gifted & Talented # Students 6 # Teachers 1

Requested Use Group Two: Reading Literacy # Students 10 # Teachers 2

Description of movable divider used (e.g. height, length, bookshelf, acoustical, etc.): Please see the attached schematic. Gifted and Talented classes are conducted in the office space.

The Board of Education approved the Dual Use application on 8.10.22 (Date)

**\*\*\* Attach Copy of Board Resolution \*\*\***

### SUBMIT THE FOLLOWING WITH THIS APPLICATION:

- A sketch/photo of the space showing room size, location of exit doors, fire detection systems, ventilation systems and divider.
- Attach Copy of Board Resolution

Superintendent of Schools: *[Signature]*

Date: 7.15.22

School Business Administrator: *[Signature]*

Date: 7.15.22

### For County Office Use Only

Inspected by: \_\_\_\_\_

Date: \_\_\_\_\_

Approved as is: \_\_\_\_\_

Not approved: \_\_\_\_\_

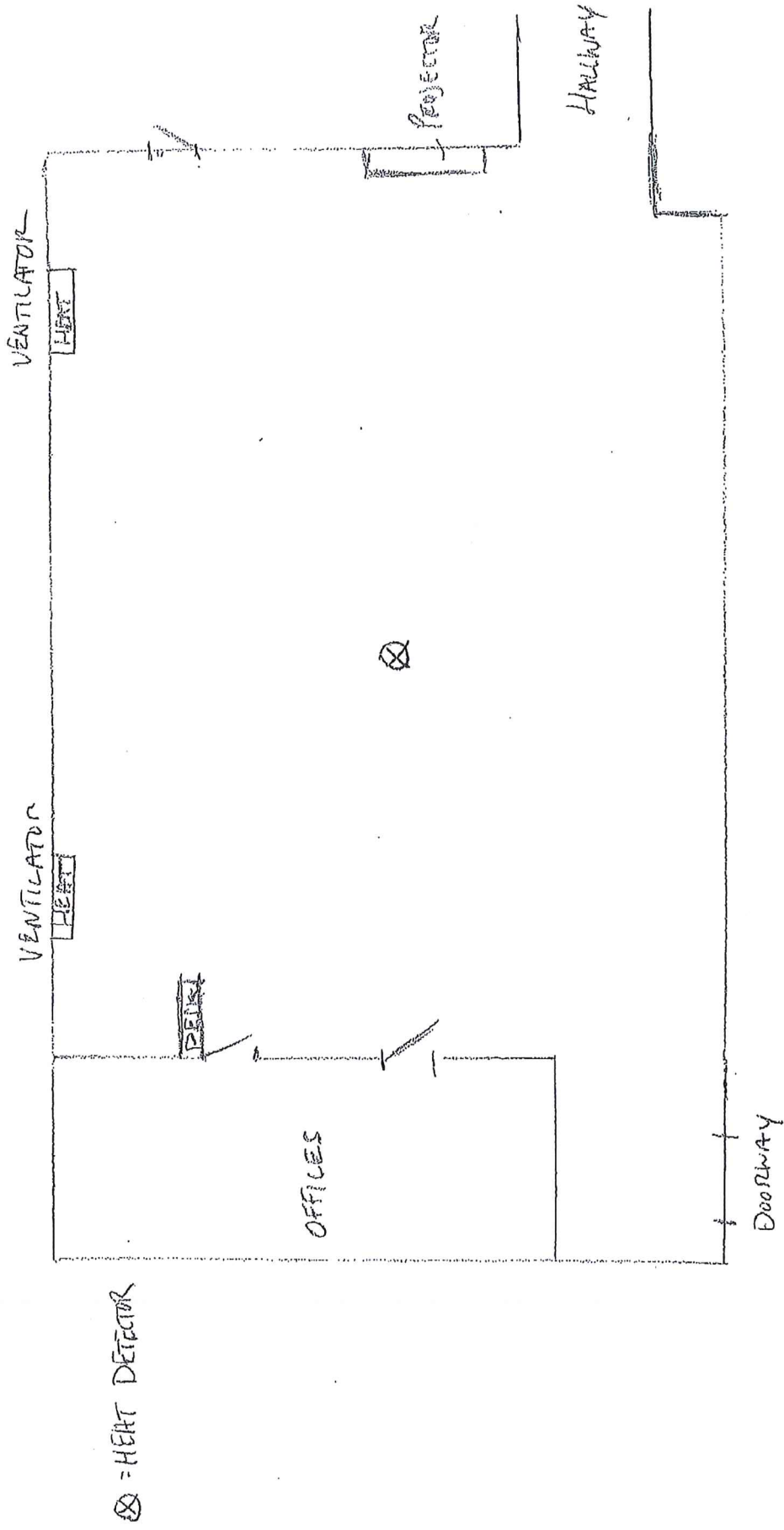
Approved subject to the following conditions: \_\_\_\_\_

Executive County Superintendent: \_\_\_\_\_

Date: \_\_\_\_\_



SCHOOL 2  
LIBRARY





# New Jersey Department of Education

## Application for Dual Use of Educational Space 2022-2023 School Year

This form is to be used when educational space is required but limited. Dual use of educational spaces is permitted under limited circumstances wherein two small group classes of similar nature separated by a movable divider are operating simultaneously within the same educational space. Permission to operate a dual use educational space must be obtained from the Executive County Superintendent Annually.

District/ County: Winslow Twp SD/ Camden Co. School/Building: School #3

Room Number/ Name: 10 State Approved Use: Yes

Requested Use Group One: Occupational Therapy # Students 4 # Teachers 1

Requested Use Group Two: Physical Therapy # Students 4 # Teachers 1

Description of movable divider used (e.g. height, length, bookshelf, acoustical, etc.): Please see the attached schematic

The Board of Education approved the Dual Use application on 8.10.22 (Date)

**\*\*\* Attach Copy of Board Resolution \*\*\***

### SUBMIT THE FOLLOWING WITH THIS APPLICATION:

- A sketch/photo of the space showing room size, location of exit doors, fire detection systems, ventilation systems and divider.
- Attach Copy of Board Resolution

Superintendent of Schools: *[Signature]* Date: 7.15.22

School Business Administrator: *[Signature]* Date: 7.15.22

### For County Office Use Only

Inspected by: \_\_\_\_\_ Date: \_\_\_\_\_

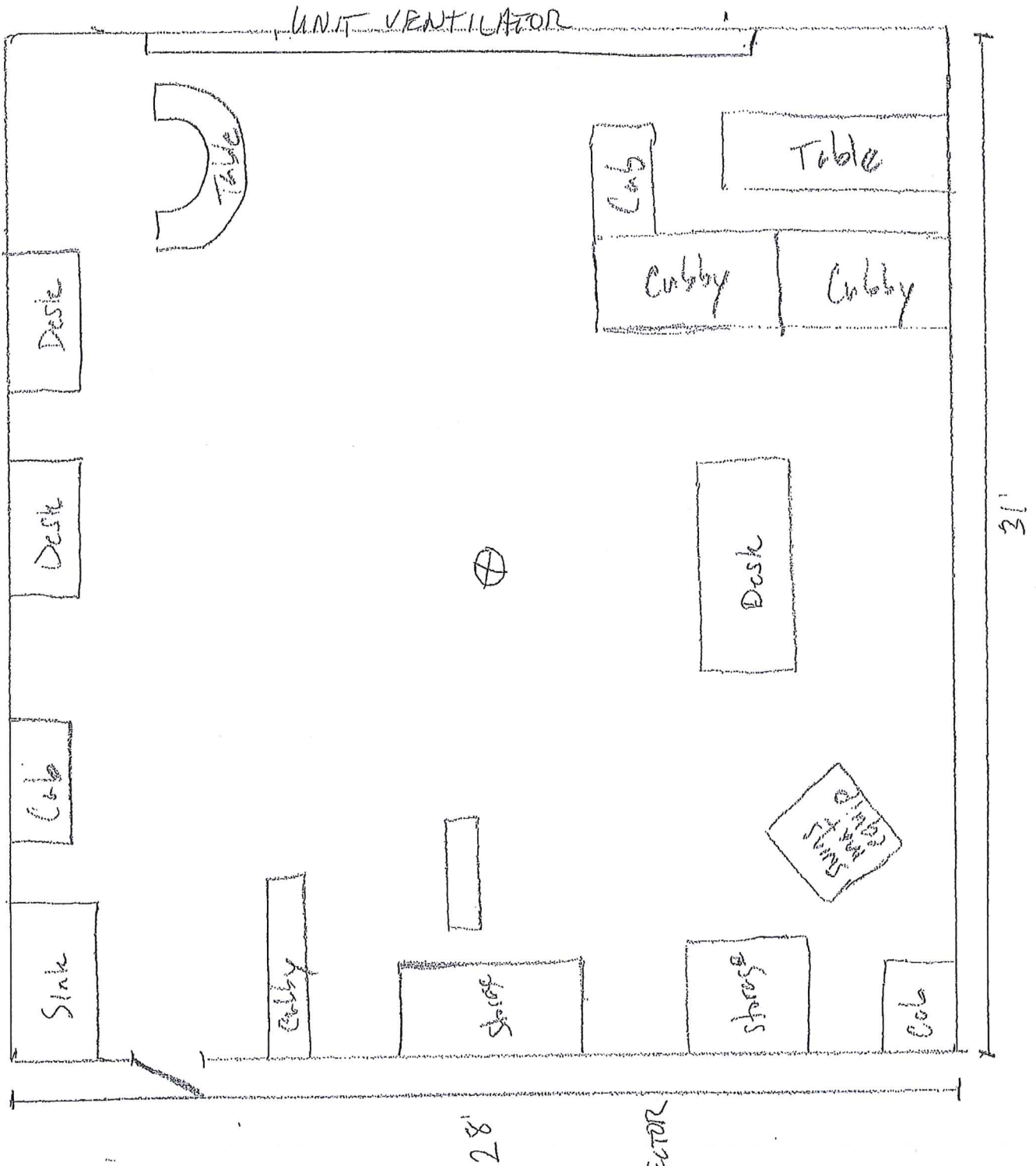
Approved as is: \_\_\_\_\_ Not approved: \_\_\_\_\_ Approved subject to the following conditions: \_\_\_\_\_

Executive County Superintendent: \_\_\_\_\_ Date: \_\_\_\_\_

School 3

Rm 10

Scale = 1/4"



⊗ = HEAT DETECTOR



# New Jersey Department of Education

## Application for Dual Use of Educational Space 2022-2023 School Year

This form is to be used when educational space is required but limited. Dual use of educational spaces is permitted under limited circumstances wherein two small group classes of similar nature separated by a movable divider are operating simultaneously within the same educational space. Permission to operate a dual use educational space must be obtained from the Executive County Superintendent Annually.

District/ County: Winslow Twp SD/ Camden Co. School/Building: School #3

Room Number/ Name: 24 State Approved Use: Yes

Requested Use Group One: Gifted & Talented # Students 5 # Teachers 1

Requested Use Group Two: Speech # Students 3 # Teachers 1

Description of movable divider used (e.g. height, length, bookshelf, acoustical, etc.): No divider – Please see the attached schematic

The Board of Education approved the Dual Use application on 8.10.22 (Date)

**\*\*\* Attach Copy of Board Resolution \*\*\***

### SUBMIT THE FOLLOWING WITH THIS APPLICATION:

- A sketch/photo of the space showing room size, location of exit doors, fire detection systems, ventilation systems and divider.
- Attach Copy of Board Resolution

Superintendent of Schools: *J. Marjorie Potrat* Date: 7.15.22

School Business Administrator: *[Signature]* Date: 7.15.22

### For County Office Use Only

Inspected by: \_\_\_\_\_ Date: \_\_\_\_\_

Approved as is: \_\_\_\_\_ Not approved: \_\_\_\_\_ Approved subject to the following conditions: \_\_\_\_\_

Executive County Superintendent: \_\_\_\_\_ Date: \_\_\_\_\_

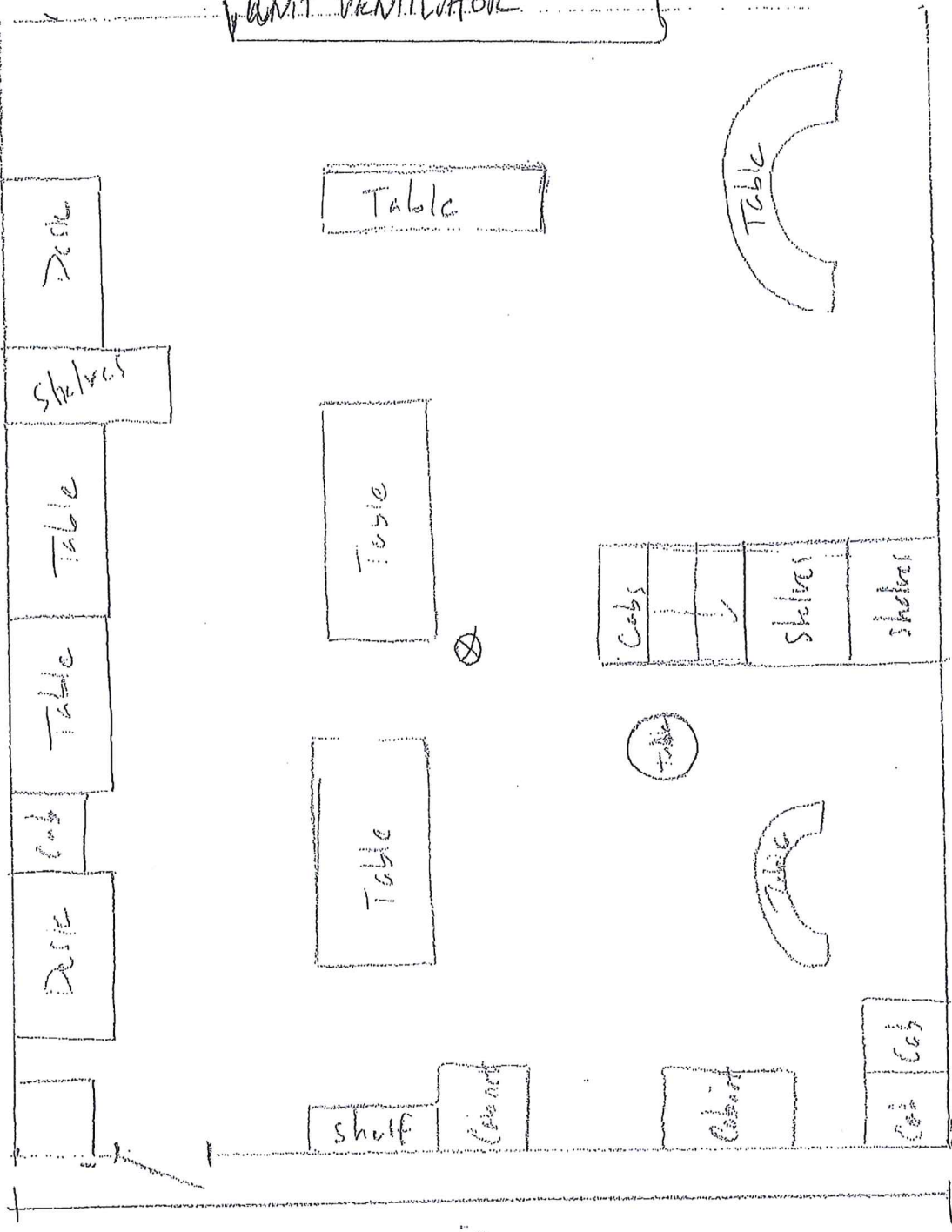
School #3

Rm 24

Scale 1"=4'

31'

UNIT VENTILATOR



25'

⊗ = HEAT DETECTOR



# New Jersey Department of Education

## Application for Dual Use of Educational Space 2022-2023 School Year

This form is to be used when educational space is required but limited. Dual use of educational spaces is permitted under limited circumstances wherein two small group classes of similar nature separated by a movable divider are operating simultaneously within the same educational space. Permission to operate a dual use educational space must be obtained from the Executive County Superintendent Annually.

District/ County: Winslow Twp SD/ Camden Co. School/Building: High School

Room Number/ Name: H 101 State Approved Use: Yes

Requested Use Group One: Special Ed MD # Students 4 # Teachers 1

Requested Use Group Two: Special ED (Resource) # Students 12 # Teachers 1

Description of movable divider used (e.g. height, length, bookshelf, acoustical, etc.): Divider walls are 6.5'partitions

The Board of Education approved the Dual Use application on 8.10.22 (Date)

**\*\*\* Attach Copy of Board Resolution \*\*\***

### SUBMIT THE FOLLOWING WITH THIS APPLICATION:

- A sketch/photo of the space showing room size, location of exit doors, fire detection systems, ventilation systems and divider.
- Attach Copy of Board Resolution

Superintendent of Schools: [Signature] Date: 7.15.22

School Business Administrator: [Signature] Date: 7.15.22

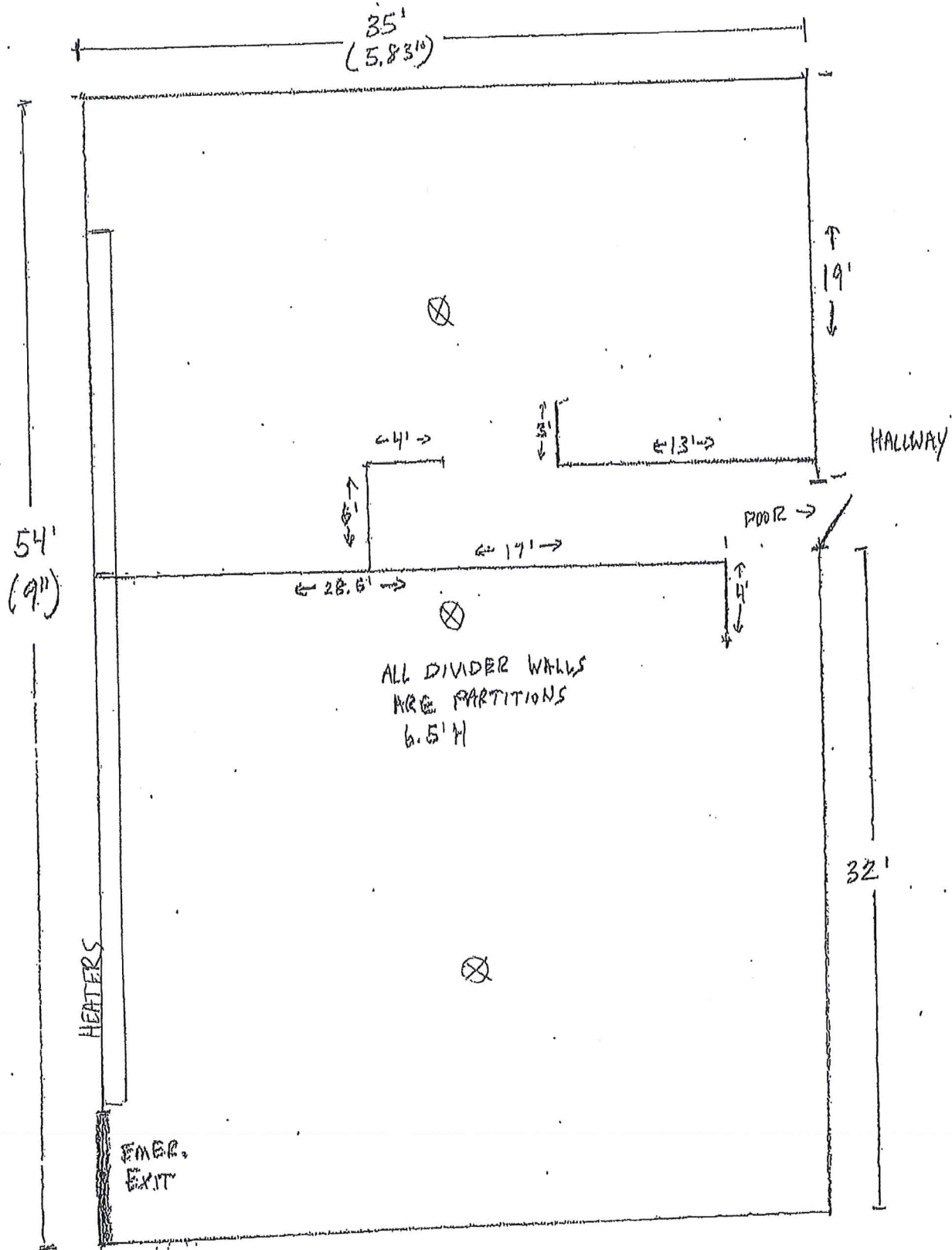
### For County Office Use Only

Inspected by: \_\_\_\_\_ Date: \_\_\_\_\_

Approved as is: \_\_\_\_\_ Not approved: \_\_\_\_\_ Approved subject to the following conditions: \_\_\_\_\_

Executive County Superintendent: \_\_\_\_\_ Date: \_\_\_\_\_

HIGH SCHOOL RM. 1101



⊗ = SMOKE DETECTOR

SCALE 1" = 6'

District: Winslow Twp School District  
 Month / Year: Jun 30, 2022

Monthly Transfer Report NJ

**DRAFT**

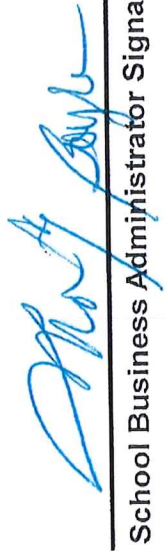
Line	Budget Category	Account	(col 1)		(col 2)		(col 3)		(col 4)		(col 5)		(col 6)		(col 7)		(col 8)	
			Original Budget	Revenues Allowed	Original Budget For 10% Calc	Maximum Transfer Amount	YTD Net Transfers to / (from) 6/30/2022	% Change of Transfers YTD	Remaining Allowable Balance From	Remaining Allowable Balance To								
			Data	Data	Col1+Col2	Col3 * .1	Col3+Col2	Col3 * .1	Col3+Col2	Col5/Col3	Col4+Col5	Col4+Col5	Col4+Col5	Col4+Col5	Col4+Col5	Col4+Col5	Col4+Col5	Col4+Col5
03200	TOTAL REGULAR PROGRAMS - INSTRUCTION	11-1XX-100-XXX	28,710,894	210,941	28,921,835	2,892,184	(1,019,936)	-3.53%	1,872,248		3,912,120							
10300 11160	Total Special Education - Instruction, Total Basic	11-2XX-100-XXX	18,239,592	14,683	18,254,275	1,825,428	(1,966,680)	-10.77%	(141,252)		3,792,107							
12160 40580	Skills/Remedial - Instruct., Total Bilingual Education -	11-000-216, 217																
41080	Instruction, Total Undistributed Expend - Speech, OT,, Total Undist. Expend. - Other Supp. Serv																	
15180	TOTAL VOCATIONAL PROGRAMS	11-3XX-100-XXX	0	0	0	0	0	0.00%	0		0							
17100 17600	Total School-Sponsored Co/Extra Curricul, Total	11-4XX-X00-XXX	1,166,183	25,539	1,191,722	119,172	(31,659)	-2.66%	87,513		150,832							
19620 20620	School-Sponsored Athletics - Instr, Total Before/After School																	
21620 22620	Programs, Total Summer School, Total Instructional																	
23620 25100	Alternative Educatio, Total Other Supplemental/At-Risk																	
	Program, Total Other Alternative Education Progra, Total Other																	
	Instructional Programs - Ins																	
27100	Total Community Services Programs/Operat	11-800-330-XXX	0	0	0	0	0	0.00%	0		0							
29180	Total Undistributed Expenditures - Instr	11-000-100-XXX	7,733,035	38,665	7,771,700	777,170	2,783,939	35.82%	3,561,109		(2,006,769)							
29680 30620	Total Undistributed Expenditures - Atten, Total Undistributed	11-000-211, 213,	5,412,826	25,311	5,438,137	543,814	389,995	7.17%	933,808		153,819							
41660 42200	Expenditures - Health, Total Undist. Expend. - Guidance, Total	218, 219, 222																
43620	Undist. Expend. - Child Study Team, Total Undist. Expend. - Edu. Media Serv.																	
43200 44180	Total Undist. Expend. - Improvement of I, Total Undist. Expend. - Instructional St	11-000-221, 223	852,861	15,835	868,696	86,870	(21,830)	-2.51%	65,040		108,700							
45300	Support Serv. - General Admin	11-000-230-XXX	1,608,249	17,922	1,626,171	162,617	0	0.00%	162,617		162,617							
46160	Support Serv. - School Admin	11-000-240-XXX	3,786,555	22,450	3,809,005	380,901	48,600	1.28%	429,501		332,301							
47200 47620	Total Undist. Expend. - Central Services, Total Undist. Expend. - Admin. Info. Tec	11-000-25X-XXX	2,244,385	10,442	2,254,827	225,483	36,079	1.60%	261,562		189,404							
51120	Total Undist. Expend. - Oper. & Maint. O	11-000-26X-XXX	7,925,806	268,486	8,194,292	819,429	246,710	3.01%	1,066,139		572,720							
52480	Total Undist. Expend. - Student Transpor	11-000-270-XXX	7,918,446	95,800	8,014,246	801,425	548,247	6.84%	1,349,672		253,178							
71260	TOTAL PERSONNEL SERVICES -EMPLOYEE	11-XXX-XXX-2XX	15,287,538	51,270	15,338,808	1,533,881	(1,381,496)	-9.01%	152,385		2,915,377							
72020	Total Undistributed Expenditures - Food	11-000-310-XXX	0	0	0	0	0	0.00%	0		0							
72120 72122	Transfer of Property Sale Proceeds Res., Transfer of Property Sale Proceeds CDI	11-000-520-934	0	0	0	0	0	0.00%	0		0							
72160	Increase in Sale/Lease-back Reserve	10-605	0	0	0	0	0	0.00%	0		0							
72180	Interest Earned on Maintenance Reserve	10-606	500	0	500	50	0	0.00%	50		50							
72200	Increase in Maintenance Reserve	10-606	0	0	0	0	0	0.00%	0		0							
72220	Increase in Current Expense Emergency Re	10-607	0	0	0	0	0	0.00%	0		0							
72240 72245	Advert. Earned on Current Exp. Emergenc, Increase in Bus	10-607	0	0	0	0	0	0.00%	0		0							
72246 72247	Advt. Res. for Fuel Costs, Increase in IMPACT Aid Reserve (General), Increase in IMPACT Aid Reserve (Capital)																	
72260	TOTAL GENERAL CURRENT EXPENSE		100,886,870	797,345	101,684,215	10,168,422	(368,032)	-0.36%	9,800,390		10,536,453							



Monthly Transfer Report NJ

District: Winslow Twp School District  
 Month / Year: Jun 30, 2022

Line	Budget Category	Account	(col 1)		(col 2)		(col 3)		(col 4)		(col 5)		(col 6)		(col 7)		(col 8)	
			Original Budget	Data	Revenues Allowed NJAC - 6A: 23A-13.3(d)	Data	Original Budget For 10% Calc	Col1+Col2	Col3 * .1	Maximum Transfer Amount	YTD Net Transfers / (from) 6/30/2022	YTD Net Transfers to of Transfers YTD	% Change of Transfers YTD	Col5/Col3	Col4+Col5	Col4+Col5	Remaining Allowable Balance To	Remaining Allowable Balance From
75880	TOTAL EQUIPMENT	12-XXX-XXX-73X	770,000	801,192	1,571,192	157,119	368,032	23.42%	525,151	699,243	0	0.00%	699,243	699,243	(210,912)			
76260	Total Facilities Acquisition and Constr	12-000-4XX-XXX	6,992,429	0	6,992,429	699,243	0	0.00%	699,243	0	0.00%	0	0	0	0			
76320	Capital Reserve -- Transfer to Capital Pr	12-000-4XX-931	0	0	0	0	0	0.00%	0	0	0.00%	0	0	0	0			
76340	Capital Reserve -- Transfer to Debt Servi	12-000-4XX-933	0	0	0	0	0	0.00%	0	0	0.00%	0	0	0	0			
76360	Increase in Capital Reserve	10-604	100	0	100	10	0	0.00%	10	0	0.00%	0	0	0	0			
76380 76385	Interest Deposit to Capital Reserve, IMPACT Aid Reserve (Cap) Tr to Cap Proj	10-604	100	0	100	10	0	0.00%	10	0	0.00%	0	0	0	0			
76400	TOTAL CAPITAL OUTLAY		7,762,529	801,192	8,563,721	856,372	368,032	4.30%	1,224,404	488,340	0	0.00%	488,340	488,340				
83080	TOTAL SPECIAL SCHOOLS	13-XXX-XXX-XXX	0	0	0	0	0	0.00%	0	0	0.00%	0	0	0	0			
84000 84005	Transfer of Funds to Charter Schools, Transfer of Funds to Renais Schools	10-000-100-56X	639,128	0	639,128	63,913	0	0.00%	63,913	63,913	0	0.00%	63,913	63,913				
84020	General Fund Contrib. to School-based Bu	10-000-520-930	0	0	0	0	0	0.00%	0	0	0.00%	0	0	0	0			
84060	GENERAL FUND GRAND TOTAL		109,288,527	1,598,537	110,887,065	11,088,706	0	0.00%	11,088,706	11,088,706	0	0.00%	11,088,706	11,088,706				



School Business Administrator Signature

7.28.22

Date

Winslow Twp School District

Transfers by Transfer Number

Start date 6/1/2022 End date 6/30/2022

TR#	Transfer Description	Amount	To Account	From Account
14158	06/01/22 Trf for SBYP MS Misc	281.00	20-298-200-200-000-07	SBYP MS - 21-22 - EMPLOY BEN
14173	06/01/22 Trf for medical waste pickup	442.00	11-000-262-300-000-15	PURCH PROF & TECHN SERVI
14234	06/01/22 Cvr June expenses shortfall	33,000.00	11-000-270-350-000-16	MGMT. FEE - ESC'S & CTSA
		221,000.00	11-000-270-517-000-16	CONTR SERV (REG) - ESC &
		329,000.00	11-000-270-518-000-16	CONTR SERV (SP ED)-ESC &
		250,000.00	- - - - -	11-000-270-615-000-17
		333,000.00	- - - - -	11-000-291-270-000-17
14235	06/01/22 Cvr June exps	36,000.00	11-000-262-610-000-15	GENERAL SUPPLIES
14161	06/02/22 Trf Abatement and floor Sch 3	33,374.00	11-000-261-420-000-03	CLEAN, REPAIR, MAINT #3
14169	06/02/22 Upgrade Communication Devices	5,700.00	11-212-100-610-000-10	GENERAL SUPPLIES
14162	06/03/22 Conduit Repairs MS HS Maint	25,568.00	11-000-252-340-000-21	PURCHASED TECHNICAL SERV
14324	06/03/22 /cvr 6.30 transp costs	30,320.00	11-000-270-350-000-16	MGMT. FEE - ESC'S & CTSA
		106,224.00	11-000-270-503-000-16	AID IN LIEU PYMT FOR NON
		1,500.00	11-000-270-504-000-16	AID IN LIEU PYMT - CHART
		6,474.00	11-000-270-514-000-16	CONTRACT SERV (SP ED STU
		83,029.00	11-000-270-517-000-16	CONTR SERV (REG) - ESC &
		121,245.00	11-000-270-518-000-16	CONTR SERV (SP ED)-ESC &
14171	06/06/22 Trf for Bus Aides for EOY	38,000.00	11-000-270-390-446-17	OTHER PURCH PROF & TECH
14174	06/06/22 Trf for SBYP HS Supplies	3,000.00	20-297-200-600-000-00	SBYP HS - 21-22 - SUPPLIES
14196	06/06/22 Setup NJSPA FY22 MS Grant	7,000.00	20-016-100-600-000-07	NJPSA - MS - SUPPLIES
14195	06/13/22 Trf for Athletic Equip HS	2,690.99	12-402-100-730-402-08	INSTRUCTIONAL EQUIPMENT
14186	06/15/22 Trf for Retired HB June	32.00	95-000-291-270-000-95	HEALTH BNFTS - TRANSITIO
14187	06/15/22 Trf for Retired HB June	2.08	95-000-291-270-000-95	HEALTH BNFTS - TRANSITIO
14192	06/15/22 Gen Sup funds to Classroom Sup	400.00	11-190-100-610-000-01	GENERAL SUPPLIES
		656.91	11-190-100-610-000-01	GENERAL SUPPLIES
		1,051.94	11-190-100-610-000-01	GENERAL SUPPLIES
		200.00	11-190-100-610-000-01	GENERAL SUPPLIES
		200.00	11-190-100-610-000-01	GENERAL SUPPLIES
		100.37	11-190-100-610-000-01	GENERAL SUPPLIES

TR#	Transfer Description	Amount	To Account	From Account
14198	06/15/22 PR 06/15/22 Transfr Extra Pays	516.65	11-110-100-101-000-01 KINDERGARTEN, EXTRA	- - - -
		500.00	11-110-100-101-000-02 KINDERGARTEN, EXTRA	- - - -
		349.98	11-110-100-101-000-04 KINDERGARTEN, EXTRA	- - - -
		2,199.59	11-120-100-101-000-01 GRADES 1-5, EXTRA	- - - -
		799.92	11-120-100-101-000-02 GRADES 1-5, EXTRA	- - - -
		195.00	11-120-100-101-000-03 GRADES 1-5, EXTRA	- - - -
		50.00	11-120-100-101-000-04 GRADES 1-5, EXTRA	- - - -
		800.00	11-120-100-101-000-05 GRADES 1-5, EXTRA	- - - -
		75.00	11-120-100-101-000-06 GRADES 1-5, EXTRA	- - - -
		1,500.00	11-130-100-101-000-05 GRADE 6, EXTRA	- - - -
		100.00	11-130-100-101-000-06 GRADE 6, EXTRA	- - - -
		3,563.28	11-130-100-101-000-98 MIDDLE SCHOOL - OTHER	- - - -
		6,657.59	11-140-100-101-000-98 HIGH SCHOOL - OTHER	- - - -
		2,716.24	- - - -	11-190-100-320-000-01 PURCHASED PROF-EDUCA
		1,299.92	- - - -	11-190-100-320-000-02 PURCHASED PROF-EDUCA
		195.00	- - - -	11-190-100-320-000-03 PURCHASED PROF-EDUCA
		399.98	- - - -	11-190-100-320-000-04 PURCHASED PROF-EDUCA
		2,300.00	- - - -	11-190-100-320-000-05 PURCHASED PROF-EDUCA
		175.00	- - - -	11-190-100-320-000-06 PURCHASED PROF-EDUCA
		3,563.28	- - - -	11-190-100-320-000-07 PURCHASED PROFESSIONAL-E
		6,657.59	- - - -	11-190-100-320-000-08 PURCHASED PROFESSIONAL-E
14199	06/15/22 PR 06/15/22 Adjustments	4,018.68	11-209-100-101-099-08 BUDGET - BD TEACHER	- - - -
		16,975.54	11-402-100-100-402-08 ATHLETIC SALARIES - HS	- - - -
		4,018.68	- - - -	11-209-100-101-099-06 BUDGET - BD TEACHER
		5,000.00	- - - -	11-401-100-100-000-05 COCURRICULAR SALARIES
		9,000.00	- - - -	11-401-100-100-000-06 COCURRICULAR SALARIES
		2,975.54	- - - -	11-401-100-100-401-07 COCURRICULAR SALARIES

Winslow Twp School District

Transfers by Transfer Number

Start date 6/1/2022 End date 6/30/2022

TR#	Transfer Description	Amount	To Account	From Account
14378	06/15/22 Legal Svcs through 6.30.22	25,000.00	11-000-230-331-000-18 LEGAL SERVICES	11-000-230-530-000-21 COMMUNICATIONS/TELEPHONE
14194	06/16/22 Consolidation	60.00	11-190-100-610-000-04 GENERAL SUPPLIES	11-000-213-300-000-04 PURCH PROF & TECHN SERVI
14205	06/16/22 P/R 06-16-22 Adjustments	593.00	11-000-213-104-099-07 BUDGET - NURSE/MEDICAL A	- - - - -
		1,200.00	11-000-219-104-099-04 BUDGET - CHILD STUDY TEA	- - - - -
		400.00	11-000-219-104-099-06 BUDGET - CHILD STUDY TEA	- - - - -
		400.00	11-000-222-104-099-02 BUDGET - LIBRARY	- - - - -
		46,655.50	11-120-100-101-099-04 BUDGET - GRADES 1-5 TEAC	- - - - -
		400.00	11-120-100-101-112-05 SAL OF TEACH - MUSIC #5	- - - - -
		800.00	11-130-100-101-099-06 BUDGET - GRADE 6 TEACHER	- - - - -
		1,225.65	11-130-100-101-115-07 BUDGET - SOCIAL STUDIES	- - - - -
		16,978.00	11-140-100-101-106-08 BUDGET - WORLD LANGUAGE	- - - - -
		1,612.19	11-140-100-101-108-08 BUDGET - PHYS ED/HEALTH	- - - - -
		19,883.97	11-140-100-101-111-08 BUDGET - MATHEMATICS	- - - - -
		23,985.48	11-140-100-101-113-08 BUDGET - SCIENCE	- - - - -
		3,297.67	11-209-100-101-099-08 BUDGET - BD TEACHER	- - - - -
		7,173.23	11-212-100-101-099-08 BUDGET - MD TEACHER	- - - - -
		593.00	- - - - -	11-000-213-104-099-08 BUDGET - NURSE/MEDICAL A
		1,600.00	- - - - -	11-000-219-104-099-05 BUDGET - CHILD STUDY TEA
		400.00	- - - - -	11-000-222-104-099-03 BUDGET - LIBRARY
		47,055.50	- - - - -	11-120-100-101-099-01 BUDGET - GRADES 1-5 TEAC
		2,025.65	- - - - -	11-130-100-101-099-05 BUDGET - GRADE 6 TEACHER
		2,274.64	- - - - -	11-140-100-101-115-08 BUDGET - SOCIAL STUDIES
		60,185.00	- - - - -	11-140-100-101-149-08 BUDGET - MILITARY SCIENC
		3,297.67	- - - - -	11-209-100-101-099-06 BUDGET - BD TEACHER
		7,173.23	- - - - -	11-212-100-101-099-06 BUDGET - MD TEACHER
14206	06/16/22 P/R 06-16-22 Adjustments-Fd 20	1,500.00	20-218-100-101-000-01 PRESCH AID - SAL OF TEAC	20-218-100-101-000-04 PRESCH AID - SAL OF TEAC
14215	06/21/22 Trf for ESS billings	2,500.00	61-990-320-300-921-00 WCD B&A PUR PROF SVC	61-990-320-500-921-00 WCD B&A OTH PURC SVC
14216	06/21/22 Trf for Refri/Freezer Bid	9,000.00	60-910-310-730-000-00 CAFETERIA EQUIPMENT	60-910-310-100-000-00 FOOD SERVICE SALARIES
		8,000.00	60-910-310-730-000-00 CAFETERIA EQUIPMENT	60-910-310-200-000-00 BENEFITS CAFE
		10,000.00	60-910-310-730-000-00 CAFETERIA EQUIPMENT	60-910-310-300-000-00 PURCHASED PROF & TECH SR
		30,000.00	60-910-310-730-000-00 CAFETERIA EQUIPMENT	60-910-310-420-000-00 CLEANING R REPAIR & MAINT

Winslow Twp School District  
End date 6/30/2022

Transfers by Transfer Number  
Start date 6/1/2022

TR#	Transfer Description	Amount	To Account	From Account
14217	06/21/22 Trf for Refri/Freezer Bid	457,655.00	60-910-310-730-000-00 CAFETERIA EQUIPMENT	
14219	06/21/22 Trf for HS supplies	60.00	11-190-100-610-160-08 GENERAL SUPPLIES	11-000-213-300-154-08 PURCH PROF & TECHN SERVI
		49.73	11-190-100-610-160-08 GENERAL SUPPLIES	11-000-213-600-154-08 SUPPLIES AND MATERIALS
		4,848.00	11-190-100-610-160-08 GENERAL SUPPLIES	11-000-218-390-153-08 OTHER PURCH PROF & TECHN
		1.32	11-190-100-610-160-08 GENERAL SUPPLIES	11-000-218-610-153-08 SUPPLIES AND MATERIALS
		2,365.00	11-190-100-610-160-08 GENERAL SUPPLIES	11-000-218-800-153-08 OTHER OBJECTS
		44.79	11-190-100-610-160-08 GENERAL SUPPLIES	11-000-219-600-151-08 SUPPLIES AND MATERIALS
		125.05	11-190-100-610-160-08 GENERAL SUPPLIES	11-000-222-600-158-08 SUPPLIES AND MATERIALS
		250.00	11-190-100-610-160-08 GENERAL SUPPLIES	11-000-222-600-159-08 SUPPLIES AND MATERIALS
		1,377.00	11-190-100-610-160-08 GENERAL SUPPLIES	11-000-223-580-160-08 TRAVEL/WORKSHOPS
		25.03	11-190-100-610-160-08 GENERAL SUPPLIES	11-190-100-420-112-08 CLEANING, REPAIR & MAINT
		1,500.00	11-190-100-610-160-08 GENERAL SUPPLIES	11-190-100-420-160-08 CLEANING, REPAIR & MAINT
		412.82	11-190-100-610-160-08 GENERAL SUPPLIES	11-190-100-610-102-08 GENERAL SUPPLIES
		49.25	11-190-100-610-160-08 GENERAL SUPPLIES	11-190-100-610-103-08 GENERAL SUPPLIES
		78.33	11-190-100-610-160-08 GENERAL SUPPLIES	11-190-100-610-105-08 GENERAL SUPPLIES
		3.02	11-190-100-610-160-08 GENERAL SUPPLIES	11-190-100-610-106-08 GENERAL SUPPLIES
		1.68	11-190-100-610-160-08 GENERAL SUPPLIES	11-190-100-610-108-08 GENERAL SUPPLIES
		3,315.43	11-190-100-610-160-08 GENERAL SUPPLIES	11-190-100-610-109-08 GENERAL SUPPLIES
		919.52	11-190-100-610-160-08 GENERAL SUPPLIES	11-190-100-610-112-08 GENERAL SUPPLIES
		53.67	11-190-100-610-160-08 GENERAL SUPPLIES	11-190-100-610-113-08 GENERAL SUPPLIES
		377.87	11-190-100-610-160-08 GENERAL SUPPLIES	11-190-100-610-149-08 GENERAL SUPPLIES
		800.00	11-190-100-610-160-08 GENERAL SUPPLIES	11-190-100-800-112-08 OTHER OBJECTS
		500.00	11-190-100-610-160-08 GENERAL SUPPLIES	11-190-100-800-149-08 OTHER OBJECTS
		200.00	11-190-100-610-160-08 GENERAL SUPPLIES	11-212-100-610-212-08 GENERAL SUPPLIES
		12.72	11-190-100-610-160-08 GENERAL SUPPLIES	11-213-100-610-213-08 GENERAL SUPPLIES
		5,317.52	11-190-100-610-160-08 GENERAL SUPPLIES	11-401-100-330-401-08 OTHER PURCHASED PROF SER
		13,991.01	11-190-100-610-160-08 GENERAL SUPPLIES	11-401-100-440-401-08 RENTALS
		2,500.00	11-190-100-610-160-08 GENERAL SUPPLIES	11-401-100-800-401-08 OTHER OBJECTS
14221	06/22/22 Transfer Funds	13,859.84	11-190-100-610-160-08 GENERAL SUPPLIES	11-401-100-600-401-08 SUPPLIES AND MATERIALS
14222	06/22/22 To Prchase Supplies	60.00	11-190-100-610-130-07 GENERAL SUPPLIES	11-190-100-610-160-07 GENERALS SUPPLIES
14224	06/22/22 Trf for Transport Repairs	98,148.38	11-000-270-420-000-16 CLEANING, REPAIR & MAINT	11-000-270-615-000-16 TRANSPORTATION SUPPLIES

Winslow Twp School District  
End date 6/30/2022

Transfers by Transfer Number  
Start date 6/1/2022

TR#	Transfer Description	Amount	To Account	From Account
14225	06/23/22 Trf for HS equip	19,407.00	12-140-100-730-160-08 INSTRUCTIONAL EQUIPMENT	11-190-100-610-160-08 GENERAL SUPPLIES
14232	06/24/22 Trf for nursing services Sch 2	8,000.00	11-000-213-300-000-02 PURCH PROF & TECHN SERVI	11-000-213-104-099-02 BUDGET - NURSE/MEDICAL A
14233	06/27/22 Shortfall	19,000.00	11-000-270-615-000-16 TRANSPORTATION SUPPLIES	11-000-270-420-000-16 CLEANING, REPAIR & MAINT
14236	06/28/22 Add'l Supplies MD classrooms	8,680.00	11-213-100-610-000-10 GENERAL SUPPLIES	11-000-100-566-000-10 TUITION TO PRIVATE SCHOO
14237	06/28/22 Trf for HS Furniture	11,372.00	12-140-100-730-160-08 INSTRUCTIONAL EQUIPMENT	11-190-100-610-160-08 GENERAL SUPPLIES
14238	06/28/22 Trf for CST equipment	6,967.26	12-000-219-732-000-10 NON-INSTRUCTIONAL	11-000-219-600-000-10 SUPPLIES AND MATERIALS
14245	06/29/22 Trf for walking path Sch 4	10,000.00	20-097-200-420-000-04 FY21 SUSTAINABLE SCH 4 - CRIM	20-097-100-600-000-04 FY21 SUSTAINABLE SCH 4 -
14246	06/29/22 Trf for walking path Sch 4	22,800.00	11-000-263-420-000-15 UE C&UG CLN, RPR, MINT SV	11-000-262-420-000-15 CLEANING, REPAIR & MAINT
14247	06/29/22 Trf for Pre-K retro	10,903.00	20-218-100-101-000-01 PRESCH AID - SAL OF TEAC	- - - - -
		7,748.32	20-218-100-101-000-02 PRESCH AID - SAL OF TEAC	- - - - -
		11,133.00	20-218-100-101-000-03 PRESCH AID - SAL OF TEAC	- - - - -
		4,345.70	20-218-100-101-000-04 PRESCH AID - SAL OF TEAC	- - - - -
		1,394.96	20-218-200-105-000-00 PRESCH ED AID- SECRETARI	- - - - -
		34,130.02	- - - - -	20-218-100-600-000-00 PRESCH ED AID- GEN SUPPL
		1,394.96	- - - - -	20-218-200-103-000-00 PRESCH ED AID - SAL OF D
14249	06/29/22 Trf for B&A Retro	4,000.00	61-990-320-100-921-00 WCD B&A SALARIES	61-990-320-200-921-00 WCD B&A BENEFITS
14254	06/29/22 Set up Ext Painting MS	38,775.00	30-000-400-334-816-07 AR/ENG SRV - EXTERIOR PAINT	- - - - -
		129,250.00	30-000-400-450-816-07 CONSTR SRV - EXTERIOR PAINT	- - - - -
		25,850.00	30-000-400-800-816-07 OTHER OBJ - EXTERIOR PAINT	- - - - -
14265	06/29/22 Trf Ext Paint to Cap Pj	38,775.00	12-000-400-932-000-17 TRANSFER TO CAPITAL PROJ	12-000-400-334-816-07 AR/ENG SRV - EXTERIOR PAINT
		129,250.00	12-000-400-932-000-17 TRANSFER TO CAPITAL PROJ	12-000-400-450-816-07 CONSTR SRV - EXTERIOR PAINT
		25,850.00	12-000-400-932-000-17 TRANSFER TO CAPITAL PROJ	12-000-400-800-816-07 OTHER OBJ - EXTERIOR PAINT
14278	06/29/22 Set up Circulation Pumps	3,774.00	30-000-400-334-807-01 AR/ENG- CIRCULATION PUMP	- - - - -
		3,774.00	30-000-400-334-807-02 AR/ENG- CIRCULATION PUMP	- - - - -
		2,883.00	30-000-400-334-807-03 AR/ENG- CIRCULATION PUMP	- - - - -
		2,883.00	30-000-400-334-807-04 AR/ENG- CIRCULATION PUMP	- - - - -
		5,603.00	30-000-400-334-807-07 AR/ENG- CIRCULATION PUMP	- - - - -
		21,507.00	30-000-400-450-807-01 CONSTR SRVC- CIRCULATION	- - - - -
		21,507.00	30-000-400-450-807-02 CONSTR SRVC- CIRCULATION	- - - - -
		25,260.00	30-000-400-450-807-03 CONSTR SRVC- CIRCULATION	- - - - -
		25,260.00	30-000-400-450-807-04 CONSTR SRVC- CIRCULATION	- - - - -

Winslow Twp School District

Transfers by Transfer Number

Start date 6/1/2022 End date 6/30/2022

TR#	Transfer Description	Amount	To Account	From Account
14278	06/29/22 Set up Circulation Pumps	64,393.00	30-000-400-450-807-07 CONSTR SRVC- CIRCULATION	- - - - -
		1,075.00	30-000-400-800-807-01 OTHER OBJ - CIRCULATION SCH	- - - - -
		1,075.00	30-000-400-800-807-02 OTHER OBJ - CIRCULATION SCH	- - - - -
		1,143.00	30-000-400-800-807-03 OTHER OBJ - CIRCULATION SCH	- - - - -
		1,143.00	30-000-400-800-807-04 OTHER OBJ - CIRCULATION SCH	- - - - -
		3,220.00	30-000-400-800-807-07 OTHER OBJ - CIRCULATION MS	- - - - -
14279	06/29/22 Trf for Arch Fees MS Circ Pump	177.00	30-000-400-334-807-07 AR/ENG- CIRCULATION PUMP	30-000-400-800-807-07 OTHER OBJ - CIRCULATION MS
14280	06/29/22 Trf Circ Pumps to Cap Pj	7,380.00	12-000-400-932-000-17 TRANSFER TO CAPITAL PROJ	12-000-400-334-807-01 AR/ENG- CIRCULATION PUMP
		7,380.00	12-000-400-932-000-17 TRANSFER TO CAPITAL PROJ	12-000-400-334-807-02 AR/ENG- CIRCULATION PUMP
		7,380.00	12-000-400-932-000-17 TRANSFER TO CAPITAL PROJ	12-000-400-334-807-03 AR/ENG- CIRCULATION PUMP
		7,380.00	12-000-400-932-000-17 TRANSFER TO CAPITAL PROJ	12-000-400-334-807-04 AR/ENG- CIRCULATION PUMP
		7,380.00	12-000-400-932-000-17 TRANSFER TO CAPITAL PROJ	12-000-400-334-807-07 AR/ENG- CIRCULATION PUMP
		24,600.00	12-000-400-932-000-17 TRANSFER TO CAPITAL PROJ	CONSTR SRVC- CIRCULATION
		24,600.00	12-000-400-932-000-17 TRANSFER TO CAPITAL PROJ	CONSTR SRVC- CIRCULATION
		24,600.00	12-000-400-932-000-17 TRANSFER TO CAPITAL PROJ	CONSTR SRVC- CIRCULATION
		24,600.00	12-000-400-932-000-17 TRANSFER TO CAPITAL PROJ	CONSTR SRVC- CIRCULATION
		24,600.00	12-000-400-932-000-17 TRANSFER TO CAPITAL PROJ	CONSTR SRVC- CIRCULATION
		4,920.00	12-000-400-932-000-17 TRANSFER TO CAPITAL PROJ	OTHER OBJ - CIRCULATION SCH
		4,920.00	12-000-400-932-000-17 TRANSFER TO CAPITAL PROJ	OTHER OBJ - CIRCULATION SCH
		4,920.00	12-000-400-932-000-17 TRANSFER TO CAPITAL PROJ	OTHER OBJ - CIRCULATION SCH
		4,920.00	12-000-400-932-000-17 TRANSFER TO CAPITAL PROJ	OTHER OBJ - CIRCULATION SCH
		4,920.00	12-000-400-932-000-17 TRANSFER TO CAPITAL PROJ	OTHER OBJ - CIRCULATION SCH
14343	06/29/22 Adj for Retro extra pay	124.25	20-239-100-100-020-01 TTL I 21-22 - SAL TEACHERS ESD	- - - - -
		124.25	20-239-100-100-020-02 TTL I 21-22 - SAL TEACHERS ESD	- - - - -
		124.25	20-239-100-100-020-03 TTL I 21-22 - SAL TEACHERS ESD	- - - - -
		124.25	20-239-100-100-020-04 TTL I 21-22 - SAL TEACHERS ESD	- - - - -
		124.25	20-239-100-100-020-05 TTL I 20-21 - SAL TEACHERS ESD	- - - - -
		124.25	20-239-100-100-020-06 TTL I 21-22 - SAL TEACHERS ESD	- - - - -
		124.25	20-239-100-100-020-07 TTL I 21-22 - SAL TEACHERS ESD	- - - - -
		124.65	20-239-100-100-020-08 TTL I 21-22 - SAL TEACHERS ESD	- - - - -
		124.25	- - - - -	20-239-100-100-000-01 TITLE I - 21-22 - SALARIES

Winslow Twp School District

Transfers by Transfer Number

Start date 6/1/2022 End date 6/30/2022

TR#	Transfer Description	Amount	To Account	From Account
14343	06/29/22 Adj for Retro extra pay	124.25	- - - - -	20-239-100-100-000-02 TITLE I - 21-22 - SALARIES
		124.25	- - - - -	20-239-100-100-000-03 TITLE I - 21-22 - SALARIES
		124.25	- - - - -	20-239-100-100-000-04 TITLE I - 21-22 - SALARIES
		124.25	- - - - -	20-239-100-100-000-05 TITLE I - 21-22 - SALARIES
		124.25	- - - - -	20-239-100-100-000-06 TITLE I - 21-22 - SALARIES
		124.25	- - - - -	20-239-100-100-000-07 TITLE I - 21-22 - SALARIES
		124.65	- - - - -	20-239-100-100-000-08 TITLE I - 21-22 - SALARIES
14250	06/30/22 Trf for final ESS bill and ben	1,323.00	61-990-320-100-921-00 WCD B&A SALARIES	- - - - -
		9,803.19	61-990-320-300-921-00 WCD B&A PUR PROF SVC	- - - - -
		1,323.00	- - - - -	61-990-320-200-921-00 WCD B&A BENEFITS
		2,000.00	- - - - -	61-990-320-400-921-00 WCD B&A LEASE/MAINT
		6,142.06	- - - - -	61-990-320-500-921-00 WCD B&A OTH PURC SVC
		1,371.13	- - - - -	61-990-320-600-921-00 WCD B&A SUPPLIES
		290.00	- - - - -	61-990-320-800-921-00 WCD B&A OTHER PURCH
14251	06/30/22 Trf for final items B&A	5,375.00	61-990-320-100-921-00 WCD B&A SALARIES	- - - - -
		3,300.00	61-990-320-300-921-00 WCD B&A PUR PROF SVC	- - - - -
14259	06/30/22 PR 06/30/22 Transfr Extra Pays	600.00	11-110-100-101-000-01 KINDERGARTEN, EXTRA	- - - - -
		100.00	11-110-100-101-000-02 KINDERGARTEN, EXTRA	- - - - -
		1,487.42	11-120-100-101-000-01 GRADES 1-5, EXTRA	- - - - -
		649.94	11-120-100-101-000-02 GRADES 1-5, EXTRA	- - - - -
		100.00	11-120-100-101-000-03 GRADES 1-5, EXTRA	- - - - -
		300.00	11-120-100-101-000-04 GRADES 1-5, EXTRA	- - - - -
		1,300.00	11-120-100-101-000-05 GRADES 1-5, EXTRA	- - - - -
		250.00	11-120-100-101-000-06 GRADES 1-5, EXTRA	- - - - -
		550.00	11-130-100-101-000-05 GRADE 6, EXTRA	- - - - -
		1,000.00	11-130-100-101-000-06 GRADE 6, EXTRA	- - - - -
		2,460.36	11-130-100-101-000-98 MIDDLE SCHOOL - OTHER	- - - - -
		3,662.26	11-140-100-101-000-98 HIGH SCHOOL - OTHER	- - - - -



Winslow Twp School District

Transfers by Transfer Number

Start date 6/1/2022 End date 6/30/2022

TR#	Transfer Description	Amount	To Account	From Account
14259	06/30/22 PR 06/30/22 Transfr Extra Pays	2,087.42	- - - - -	11-190-100-320-000-01 PURCHASED PROF-EDUCA
		749.94	- - - - -	11-190-100-320-000-02 PURCHASED PROF-EDUCA
		100.00	- - - - -	11-190-100-320-000-03 PURCHASED PROF-EDUCA
		300.00	- - - - -	11-190-100-320-000-04 PURCHASED PROF-EDUCA
		1,850.00	- - - - -	11-190-100-320-000-05 PURCHASED PROF-EDUCA
		1,250.00	- - - - -	11-190-100-320-000-06 PURCHASED PROF-EDUCA
		2,460.36	- - - - -	11-190-100-320-000-07 PURCHASED PROFESSIONAL-E
		3,662.26	- - - - -	11-190-100-320-000-08 PURCHASED PROFESSIONAL-E
14260	06/30/22 PR 06/30 #414 Adjustments	4,754.87	11-000-270-160-000-16 SAL FOR TRANSP (REG) - E	BUDGET - TRANSPORTATION
14268	06/30/22 PR 06/30/22 #413 Adjustment	0.12	11-000-230-105-099-14 BUDGET - SUPERINDNT SECR	COMMUNICATIONS/TELEPHONE
14269	06/30/22 PR 06/30/22 #413 Adjustments	0.04	11-000-218-105-099-08 BUDGET - GUIDANCE SECRET	
		8,760.00	11-000-240-103-099-03 BUDGET - PRINCIPAL/ASST	
		0.04	11-000-240-105-099-02 BUDGET - SCHOOL SECR/CLE	
		0.04	11-000-240-105-099-05 BUDGET - SCHOOL SECR/CLE	
		0.16	11-000-262-104-099-15 BUDGET - DIRECTOR OF OPER	
		0.04	- - - - -	BUDGET - GUIDANCE SECRET
		8,760.00	- - - - -	BUDGET - PRINCIPAL/ASST
		0.08	- - - - -	BUDGET - SCHOOL SECR/CLE
		0.16	- - - - -	BUDGET - MIS STAFF
14270	06/30/22 PR 063022 #413 Adjustments	0.04	20-297-200-103-000-00 SBYP HS 21-22 - PROG DIR	SBYP HS 21-22 - SECRETARY
14285	06/30/22 Trf for Final June ESS Bus Aid	7,800.00	11-000-270-390-446-17 OTHER PURCH PROF & TECH	MISC PURCH SERV-TRANSPOR
14287	06/30/22 Trf for final items B&A	265.00	61-990-320-100-921-00 WCD B&A SALARIES	WCD B&A PUR PROF SVC
14294	06/30/22 Trf for final electric bills	47,808.05	11-000-262-622-000-15 ENERGY (ELECTRICITY)	ENERGY (NATURAL GAS)
14299	06/30/22 Trf for Final bills FS	164.27	60-910-310-500-000-00 OTHER PURCHASED SERVIES	FOOD SERVICE SALARIES
		1,712.36	60-910-310-500-000-00 OTHER PURCHASED SERVIES	BENEFITS CAFE
		4,000.00	60-910-310-500-000-00 OTHER PURCHASED SERVIES	PURCHASED PROF & TECH SR
		5,009.99	60-910-310-500-000-00 OTHER PURCHASED SERVIES	CLEANING R REPAIR & MAINT
		2,313.29	60-910-310-500-000-00 OTHER PURCHASED SERVIES	RENTALS
		91,837.51	60-910-310-500-000-00 OTHER PURCHASED SERVIES	SUPPLIES AND MATERIALS

Winslow Twp School District

Transfers by Transfer Number

Start date 6/1/2022 End date 6/30/2022

TR#	Transfer Description	Amount	To Account	From Account
14299	06/30/22 Trf for Final bills FS	0.97	60-910-310-500-000-00	60-910-310-730-000-00
		12,533.29	60-910-310-500-000-00	60-910-310-872-000-00
		837.53	60-910-310-500-000-00	60-910-310-890-000-00
14300	06/30/22 Trf for Final bills FS	61,400.00	60-910-310-500-000-00	- - - - -
14309	06/30/22 Trf for PY Tuition Adj	10,349.34	11-000-100-561-000-10	11-000-100-566-000-10
		23,652.34	11-000-100-562-000-10	11-000-100-566-000-10
14319	06/30/22 Trf for PY tuition adj	1,940.12	11-000-100-562-000-10	11-000-100-561-000-10
14325	06/30/22 Trf for vacation buyback	2,466.80	11-000-219-105-099-07	- - - - -
		1,342.36	11-000-221-105-099-20	- - - - -
		6,838.33	11-000-240-103-099-02	- - - - -
		3,121.00	11-000-240-103-099-03	- - - - -
		8,792.14	11-000-240-103-099-04	- - - - -
		4,284.44	11-000-240-103-099-05	- - - - -
		5,505.06	11-000-240-103-099-06	- - - - -
		17,142.16	11-000-240-103-099-08	- - - - -
		3,608.32	11-000-240-104-099-08	- - - - -
		6,336.78	11-000-240-104-099-10	- - - - -
		3,766.93	11-000-240-105-099-07	- - - - -
		6,660.00	11-000-240-199-099-08	Sch Adm-Unused Vac-Term/Retire
		3,473.58	11-000-251-100-099-13	BUDGET - HUMAN RESOURCES
		4,059.99	11-000-252-100-099-21	BUDGET - MIS STAFF
		2,354.35	11-000-262-104-099-15	BUDGET - DIRECTOR OF OPER
		2,466.80	- - - - -	11-000-219-104-999-10
		1,342.36	- - - - -	11-000-221-102-099-20
		27,740.47	- - - - -	11-000-240-105-000-98
		11,654.19	- - - - -	11-000-240-105-099-03
		26,660.50	- - - - -	11-000-240-105-099-10
		7,533.57	- - - - -	11-000-251-100-000-98
		2,354.35	- - - - -	11-000-262-420-000-15
		2,681.00	60-910-310-200-000-00	- - - - -
14328	06/30/22 Trf for Cafe Sick BB	1,800.00	11-000-240-103-099-08	11-000-240-103-099-07
14331	06/30/22 Trf for Vouchers AP			

CAFETERIA EQUIPMENT  
COS - Non-Reimbursable Prgm  
MISC EXPENDITURES  
TUITION TO PRIVATE SCHOO  
TUITION TO PRIVATE SCHOO  
TUITION TO OTH LEA IN NJ  
BUDGET - CST SECRETARY  
BUDGET - SUPV OF INSTR S  
BUDGET - PRINCIPAL/ASST  
BUDGET - PRINCIPAL/ASST  
BUDGET - PRINCIPAL/ASST  
BUDGET - PRINCIPAL/ASST  
BUDGET - PRINCIPAL/ASST  
BUDGET - PRINCIPAL/ASST  
BUDGET - ATHLETIC DIRECT  
BUDGET - SPECIAL SERV DI  
BUDGET - SCHOOL SEC/R/CL  
Sch Adm-Unused Vac-Term/Retire  
BUDGET - HUMAN RESOURCES  
BUDGET - MIS STAFF  
BUDGET - DIRECTOR OF OPER  
CST SUMMER SALARIES  
BUDGET - SUPERVISORS OF  
SCHOOL SEC. - OTHER  
BUDGET - SCHOOL SEC/R/CL  
BUDGET - SCHOOL SEC/R/CL  
CENTRAL SRVCS - OTHER  
CLEANING, REPAIR & MAINT  
BUDGET - PRINCIPAL/ASST

Winslow Twp School District

Transfers by Transfer Number

Start date 6/1/2022 End date 6/30/2022

TR#	Transfer Description	Amount	To Account	From Account
14332	06/30/22 Trf for PY Tuition Adj	26,613.00	11-000-100-562-000-10 TUITION TO OTH LEA IN NJ	11-000-100-561-000-10 TUITION TO OTH LEA IN NJ
14339	06/30/22 Trf for Teacher coverages	50.00	11-110-100-101-000-02 KINDERGARTEN, EXTRA	- - - - -
		424.99	11-120-100-101-000-01 GRADES 1-5, EXTRA	- - - - -
		299.98	11-120-100-101-000-02 GRADES 1-5, EXTRA	- - - - -
		100.00	11-120-100-101-000-03 GRADES 1-5, EXTRA	- - - - -
		1,700.00	11-120-100-101-000-06 GRADES 1-5, EXTRA	- - - - -
		770.65	11-130-100-101-000-98 MIDDLE SCHOOL - OTHER	- - - - -
		1,894.76	11-140-100-101-000-98 HIGH SCHOOL - OTHER	- - - - -
		50.00	- - - - -	11-110-100-101-000-98 BUDGET - KINDERGARTEN -
		2,524.97	- - - - -	11-120-100-101-000-98 GRADES 1-5 TEACHERS - OT
		770.65	- - - - -	11-130-100-101-160-07 ALTERNATIVE ED - WINDSOA
		1,894.76	- - - - -	11-140-100-101-160-08 ALTERNATIVE ED - WINDSOA
14344	06/30/22 Cover Aide in Lieu NP shortage	15,500.00	11-000-270-503-000-16 AID IN LIEU PYMT FOR NON	11-000-270-505-000-16 AID IN LIEU-CHOICE SCH
14345	06/30/22 Trf for Salary and Benefits	0.53	20-373-200-100-000-00 PERKINS 2021-22 - SUP SALARY	20-373-100-500-000-00 PERKINS 2021-22 - OTH PUR
		0.36	20-373-200-200-000-00 PERKINS 2021-22 - EMPL	20-373-100-500-000-00 PERKINS 2021-22 - OTH PUR
14347	06/30/22 Trf for Title 1 TPAF/FICA	1,500.00	20-239-200-200-000-00 TTL I 21-22 - EMPL BENEFITS	20-239-100-600-000-01 TTL I 21-22 - SUPPLIES & MATER
		1,500.00	20-239-200-200-000-00 TTL I 21-22 - EMPL BENEFITS	20-239-100-600-000-02 TTL I 21-22 - SUPPLIES & MATER
		2,772.66	20-239-200-200-000-00 TTL I 21-22 - EMPL BENEFITS	20-239-100-600-000-07 TTL I 21-22 - SUPPLIES & MATER
		3,227.34	20-239-200-200-000-00 TTL I 21-22 - EMPL BENEFITS	20-239-200-100-000-00 TITLE I - 21-22 - PROG DIR SAL
14348	06/30/22 Trf for IDEA TPAF/FICA	3,500.00	20-252-200-200-000-00 IDEA - 21-22 EMPLOYEE	20-252-200-100-000-00 IDEA B 21-22 - SALARIES
14349	06/30/22 Trf for June NJASBO Reimb	600.00	11-000-251-580-000-17 TRAVEL / WORKSHOPS	11-000-251-592-000-17 MISC PURCHASED SERVICES
14350	06/30/22 Trf for PY Tuition Adj	11,714.34	11-000-100-562-000-10 TUITION TO OTH LEA IN NJ	11-000-100-561-000-10 TUITION TO OTH LEA IN NJ
14352	06/30/22 Set up Alyssa Law Sch Sec Grt	27,149.00	30-000-400-720-795-01 BUILDINGS - SCH SEC - SCH 1	- - - - -
		27,149.00	30-000-400-720-796-02 BUILDINGS - SCH SEC - SCH 2	- - - - -
		27,149.00	30-000-400-720-797-03 BUILDINGS - SCH SEC - SCH 3	- - - - -
		32,517.00	30-000-400-720-798-04 BUILDINGS - SCH SEC - SCH 4	- - - - -
		29,224.00	30-000-400-720-799-05 BUILDINGS - SCH SEC - SCH 5	- - - - -
		27,746.00	30-000-400-720-800-06 BUILDINGS - SCH SEC - SCH 6	- - - - -
		41,904.00	30-000-400-720-801-07 BUILDINGS - SCH SEC - MS	- - - - -

Winslow Twp School District

Transfers by Transfer Number

Start date 6/1/2022 End date 6/30/2022

TR#	Transfer Description	Amount	To Account	From Account
14352	06/30/22 Set up Alyssa Law Sch Sec Grt	46,468.00	30-000-400-720-802-08 BUILDINGS - SCH SEC - HS	
14354	06/30/22 Trf for hood inspections	0.33	60-910-310-420-000-00 CLEANING R REPAIR & MAINT	60-910-310-200-000-00 BENEFITS CAFE
		38.06	60-910-310-420-000-00 CLEANING R REPAIR & MAINT	60-910-310-500-000-00 OTHER PURCHASED SERVICES
		842.13	60-910-310-420-000-00 CLEANING R REPAIR & MAINT	60-910-310-622-000-00 ENERGY - ELECTRIC
14368	06/30/22 Adj SBYP HS for FY22 OTF	7,819.00		20-297-200-300-012-00 SBYP HS 21-22 - PUR PROF OTF
		3,034.70		20-297-200-600-012-00 SBYP HS 21-22 - SUPPLIES OTF
		1,295.00		20-297-200-800-012-00 SBYP HS 21-22 - OTHER OTF
		6,819.15		20-297-400-730-012-00 SBYP HS 21-22 - EQUIPMENT
14369	06/30/22 Adj SBYP MS for FY22 OTF	508.54		20-298-200-600-012-07 SBYP MS 21-22 - SUPPLIES OTF
		1,295.00		20-298-200-800-012-07 SBYP MS 21-22 - OTHER OTF
		571.75		20-298-400-730-012-07 SBYP MS 21-22 - EQUIPMENT
14384	06/30/22 Trf for bottled water MS	13.00	20-298-200-600-000-07 SBYP MS - 21-22 - SUPPLIES	20-298-200-300-000-07 SBYP MS - 21-22 - PURCH PROF
14390	06/30/22 Trf Closed Capital Prj FY 22	5,160.36		30-000-400-334-789-07 AR/ENG SVCS - GREEN HOUSE
		9,001.00		30-000-400-334-791-08 AR/ENG SVCS - HS ADDITION
		810.40		30-000-400-334-794-07 AR/ENG SVCS - MS PROJECTS
		3,392.46		30-000-400-334-795-01 AR/ENG SVCS - SCH 1 19-20 PRJ
		49.71		30-000-400-334-796-02 AR/ENG SVCS - SCH 2 19-20 PRJ
		4,049.33		30-000-400-334-797-03 AR/ENG SVCS - SCH 3 19-20 PRJ
		5,145.09		30-000-400-334-798-04 AR/ENG SVCS - SCH 4 19-20 PRJ
		5,470.06		30-000-400-334-799-05 AR/ENG SVCS - SCH 5 19-20 PRJ
		112.02		30-000-400-334-800-06 AR/ENG SVCS - SCH 6 19-20 PRJ
		9,969.42		30-000-400-334-801-07 AR/ENG SVCS - MS 19-20 PRJ
		14,363.16		30-000-400-334-802-08 AR/ENG SVCS - HS 19-20 PRJ
		14,000.00		30-000-400-334-803-09 AR/ENG SVCS - ADMIN 19-20 PRJ
		2,500.00		30-000-400-390-789-07 OTH PURCH PROF- MS GREEN
		24,944.25		30-000-400-390-791-08 OTH PUR PROF & TECH SRV - HS
		98.00		30-000-400-390-794-07 OTH PUR PRO & TECHN SRV -
		3,272.84		30-000-400-390-795-01 OTH PURCH PROF- SCH 1 19-20
		2,931.29		30-000-400-390-796-02 OTH PURCH PROF- SCH 2 19-20
		3,716.84		30-000-400-390-797-03 OTH PURCH PROF- SCH 3 19-20
		4,963.90		30-000-400-390-798-04 OTH PURCH PROF- SCH 4 19-20

Start date 6/1/2022 End date 6/30/2022

TR#	Transfer Description	Amount	To Account	From Account
14390	06/30/22 Trf Closed Capital Prj FY 22	5,274.85	- - - - -	30-000-400-390-799-05
		5,179.83	- - - - -	OTH PURCH PROF- SCH 5 19-20
		9,618.45	- - - - -	30-000-400-390-800-06
		13,858.84	- - - - -	OTH PURCH PROF- SCH 6 19-20
		10,686.51	- - - - -	30-000-400-390-801-07
		21,500.00	- - - - -	OTH PURCH PROF- MS 19-20 PRJ
		36,112.00	- - - - -	30-000-400-390-802-08
		18,000.00	- - - - -	OTH PURCH PROF- HS 19-20 PR
		2,928.70	- - - - -	30-000-400-390-803-09
		12,483.70	- - - - -	OTH PURCH PROF- ADMIN 19-20
		7,248.68	- - - - -	CONST SRVS- GREEN HOUSE
		4,442.07	- - - - -	30-000-400-450-789-07
		4,720.02	- - - - -	CONST SRVS - HS ADDITION
		9,447.27	- - - - -	30-000-400-450-791-08
		8,607.73	- - - - -	CONST SERV - MS PROJECTS
		12,400.63	- - - - -	30-000-400-450-794-07
		150,799.00	- - - - -	CONST SRVS - SCH 1 19-20
		27,149.00	- - - - -	30-000-400-450-795-01
		27,149.00	- - - - -	CONST SRVS - SCH 2 19-20
		27,149.00	- - - - -	30-000-400-450-796-02
		32,517.00	- - - - -	CONST SRVS - SCH 3 19-20
		29,224.00	- - - - -	30-000-400-450-797-03
		27,746.00	- - - - -	CONST SRVS - SCH 4 19-20
		41,904.00	- - - - -	30-000-400-450-798-04
		46,468.00	- - - - -	CONST SRVS - SCH 5 19-20
		32,676.04	- - - - -	30-000-400-450-799-05
		197,347.49	- - - - -	CONST SRVS - SCH 6 19-20
		30,700.02	- - - - -	30-000-400-450-800-06
		21,784.44	- - - - -	CONST SRVS - MS 19-20 PRJ
		24,893.60	- - - - -	30-000-400-450-801-07
		25,530.47	- - - - -	CONST SRVS - HS 19-20 PRJ
			- - - - -	30-000-400-450-802-08
			- - - - -	CONST SRVS - HS 19-20 PRJ
			- - - - -	30-000-400-450-803-09
			- - - - -	CONST SRVS - ADMIN 19-20
			- - - - -	BUILDINGS - SCH SEC - SCH 1
			- - - - -	30-000-400-720-795-01
			- - - - -	BUILDINGS - SCH SEC - SCH 2
			- - - - -	30-000-400-720-796-02
			- - - - -	BUILDINGS - SCH SEC - SCH 3
			- - - - -	30-000-400-720-797-03
			- - - - -	BUILDINGS - SCH SEC - SCH 4
			- - - - -	30-000-400-720-798-04
			- - - - -	BUILDINGS - SCH SEC - SCH 5
			- - - - -	30-000-400-720-799-05
			- - - - -	BUILDINGS - SCH SEC - SCH 6
			- - - - -	30-000-400-720-800-06
			- - - - -	BUILDINGS - SCH SEC - MS
			- - - - -	30-000-400-720-801-07
			- - - - -	BUILDINGS - SCH SEC - HS
			- - - - -	30-000-400-720-802-08
			- - - - -	BUILDINGS - SCH SEC - HS
			- - - - -	30-000-400-800-789-07
			- - - - -	OTH OBJECTS - HS ADDITION
			- - - - -	30-000-400-800-791-08
			- - - - -	OTHER OBJECTS - MS
			- - - - -	30-000-400-800-794-07
			- - - - -	OTHER OBJECTS - SCH 1 19-20
			- - - - -	30-000-400-800-795-01
			- - - - -	OTHER OBJECTS - SCH 2 19-20
			- - - - -	30-000-400-800-796-02
			- - - - -	OTHER OBJECTS - SCH 3 19-20
			- - - - -	30-000-400-800-797-03

Winslow Twp School District

Transfers by Transfer Number

Start date 6/1/2022 End date 6/30/2022

TR#	Transfer Description	Amount	To Account	From Account
14390	06/30/22 Trf Closed Capital Prj FY 22	33,042.00	- - - -	30-000-400-800-798-04 OTHER OBJECTS - SCH 4 19-20
		35,106.80	- - - -	30-000-400-800-799-05 OTHER OBJECTS - SCH 1 19-20
		40,575.85	- - - -	30-000-400-800-800-06 OTHER OBJECTS - SCH 6 19-20
		64,024.09	- - - -	30-000-400-800-801-07 OTHER OBJECTS - MS 19-20 PR
		91,718.27	- - - -	30-000-400-800-802-08 OTHER OBJECTS - HS 19-20 PRJ
		66,431.00	- - - -	30-000-400-800-803-09 OTHER OBJECTS - ADMIN 19-20
		<b>5,873,535.73</b>		<b>Report Total</b>

**DRAFT**

Starting date 7/1/2021 Ending date 6/30/2022 Fund: 10 GENERAL FUND

Assets and Resources

Assets:

101	Cash in bank		\$16,303,790.60
102 - 106	Cash Equivalents		\$0.00
111	Investments		\$0.00
116	Capital Reserve Account		\$11,556,413.72
117	Maintenance Reserve Account		\$4,380,585.34
118	Emergency Reserve Account		\$0.00
121	Tax levy Receivable		\$4,212,200.00

Accounts Receivable:

132	Interfund	\$1,034,049.05	
141	Intergovernmental - State	\$6,423,997.45	
142	Intergovernmental - Federal	\$40,349.62	
143	Intergovernmental - Other	\$0.00	
153, 154	Other (net of estimated uncollectable of \$ _____)	\$781,697.93	\$8,280,094.05

Loans Receivable:

131	Interfund	\$0.00	
151, 152	Other (Net of estimated uncollectable of \$ _____)	\$0.00	\$0.00

Other Current Assets

\$0.00

Resources:

301	Estimated revenues	\$99,103,834.00	
302	Less revenues	(\$102,550,745.56)	(\$3,446,911.56)

Total assets and resources

\$41,286,172.15

Starting date 7/1/2021 Ending date 6/30/2022 Fund: 10 GENERAL FUND

Liabilities and Fund Equity

Liabilities:

411	Intergovernmental accounts payable - state		\$0.00
421	Accounts payable		\$3,019,508.42
431	Contracts payable		\$0.00
451	Loans payable		\$0.00
481	Deferred revenues		\$0.00
	Other current liabilities		\$66,479.87
	<b>Total liabilities</b>		<b>\$3,085,988.29</b>

Fund Balance:

Appropriated:

753,754	Reserve for encumbrances		\$1,966,411.93
761	Capital reserve account - July	\$11,556,413.72	
604	Add: Increase in capital reserve	\$0.00	
307	Less: Bud. w/d cap. reserve eligible costs	\$0.00	
309	Less: Bud. w/d cap. reserve excess costs	\$0.00	\$11,556,413.72
764	Maintenance reserve account - July	\$4,380,585.34	
606	Add: Increase in maintenance reserve	\$0.00	
310	Less: Bud. w/d from maintenance reserve	\$0.00	\$4,380,585.34
766	Reserve for Cur. Exp. Emergencies - July	\$0.00	
607	Add: Increase in cur. exp. emer. reserve	\$0.00	
312	Less: Bud. w/d from cur. exp. emer. reserve	\$0.00	\$0.00
762	Reserve for Adult Education		\$0.00
750-752,76x	Other reserves		\$0.00
601	Appropriations	\$110,887,064.56	
602	Less: Expenditures	(\$99,295,192.01)	
	Less: Encumbrances	(\$1,966,411.93)	(\$101,261,603.94)
	Total appropriated		\$27,528,871.61
	Unappropriated:		
770	Fund balance, July 1		\$10,671,312.25
771	Designated fund balance		\$0.00
303	Budgeted fund balance		\$0.00
	Total fund balance		\$38,200,183.86
	Total liabilities and fund equity		<u>\$41,286,172.15</u>



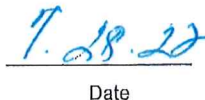
Starting date 7/1/2021 Ending date 6/30/2022 Fund: 10 GENERAL FUND

Recapitulation of Budgeted Fund Balance:

	<u>Budgeted</u>	<u>Actual</u>	<u>Variance</u>
Appropriations	\$110,887,064.56	\$101,261,603.94	\$9,625,460.62
Revenues	(\$99,103,834.00)	(\$102,550,745.56)	\$3,446,911.56
Subtotal	<u>\$11,783,230.56</u>	<u>(\$1,289,141.62)</u>	<u>\$13,072,372.18</u>
Change in capital reserve account:			
Plus - Increase in reserve	\$0.00	\$0.00	\$0.00
Less - Withdrawal from reserve	\$0.00	\$0.00	\$0.00
Subtotal	<u>\$11,783,230.56</u>	<u>(\$1,289,141.62)</u>	<u>\$13,072,372.18</u>
Change in maintenance reserve account:			
Plus - Increase in reserve	\$0.00	\$0.00	\$0.00
Less - Withdrawal from reserve	\$0.00	\$0.00	\$0.00
Subtotal	<u>\$11,783,230.56</u>	<u>(\$1,289,141.62)</u>	<u>\$13,072,372.18</u>
Change in emergency reserve account:			
Plus - Increase in reserve	\$0.00	\$0.00	\$0.00
Less - Withdrawal from reserve	\$0.00	\$0.00	\$0.00
Subtotal	<u>\$11,783,230.56</u>	<u>(\$1,289,141.62)</u>	<u>\$13,072,372.18</u>
Less: Adjustment for prior year	(\$11,783,230.56)	(\$11,783,230.56)	\$0.00
Budgeted fund balance	<u>\$0.00</u>	<u>(\$13,072,372.18)</u>	<u>\$13,072,372.18</u>

Prepared and submitted by :

  
Board Secretary

  
Date

Starting date 7/1/2021 Ending date 6/30/2022 Fund: 10 GENERAL FUND

Revenues:		Org Budget	Transfers	Budget Est	Actual	Over/Under	Unrealized
00370	SUBTOTAL – Revenues from Local Sources	54,364,508	0	54,364,508	56,220,020		(1,855,512)
00520	SUBTOTAL – Revenues from State Sources	44,494,923	0	44,494,923	46,134,331		(1,639,408)
00570	SUBTOTAL – Revenues from Federal Sources	244,403	0	244,403	196,394	Under	48,009
Total		99,103,834	0	99,103,834	102,550,746		(3,446,912)
Expenditures:		Org Budget	Transfers	Adj Budget	Expended	Encumber	Available
03200	TOTAL REGULAR PROGRAMS - INSTRUCTION	28,710,894	(808,995)	27,901,899	25,544,338	204,837	2,152,725
10300	Total Special Education - Instruction	10,987,815	(57,135)	10,930,681	9,729,391	18,164	1,183,125
11160	Total Basic Skills/Remedial – Instruct.	490,833	14,289	505,122	429,793	0	75,329
12160	Total Bilingual Education – Instruction	322,177	12,892	335,069	331,154	0	3,916
17100	Total School-Sponsored Co/Extra Curricul	349,500	(52,644)	296,856	279,190	1,925	15,741
17600	Total School-Sponsored Athletics – Instr	816,683	46,523	863,206	789,707	29,143	44,356
29180	Total Undistributed Expenditures - Instr	7,733,035	2,822,604	10,555,639	10,083,788	67,822	404,030
29680	Total Undistributed Expenditures – Atten	106,850	(3,500)	103,350	61,869	0	41,481
30620	Total Undistributed Expenditures – Heat	852,335	7,438	859,773	811,431	6,893	41,449
40580	Total Undistributed Expend – Speech, OT,	2,070,950	(55,203)	2,015,747	1,906,670	16,535	92,542
41080	Total Undist. Expend. – Other Supp. Serv	4,367,817	(1,866,840)	2,500,977	1,524,963	4,839	971,175
41660	Total Undist. Expend. – Guidance	1,198,597	116,779	1,315,376	1,309,732	317	5,327
42200	Total Undist. Expend. – Child Study Team	2,781,531	(26,596)	2,754,936	2,658,780	4,261	91,894
43200	Total Undist. Expend. – Improvement of I	768,361	55,399	823,760	706,718	4,257	112,785
43620	Total Undist. Expend. – Edu. Media Serv.	473,513	321,185	794,698	530,699	234,875	29,123
44180	Total Undist. Expend. – Instructional St	84,500	(61,394)	23,106	6,738	0	16,369
45300	Support Serv. - General Admin	1,608,249	17,922	1,626,171	1,017,261	57,538	551,372
46160	Support Serv. - School Admin	3,786,555	71,050	3,857,605	3,748,199	7,316	102,090
47200	Total Undist. Expend. – Central Services	1,447,337	(58)	1,447,279	1,112,360	5,539	329,381
47620	Total Undist. Expend. – Admin. Info. Tec	797,048	46,579	843,627	683,691	61,158	98,778
51120	Total Undist. Expend. – Oper. & Maint. O	7,925,806	515,196	8,441,002	7,753,317	411,550	276,134
52480	Total Undist. Expend. – Student Transpor	7,918,446	644,047	8,562,493	7,882,513	227,584	452,396
71260	TOTAL PERSONNEL SERVICES –EMPLOYEE	15,287,538	(1,330,226)	13,957,312	11,745,507	79,079	2,132,727
72180	Interest Earned on Maintenance Reserve	500	0	500	0	0	500
75880	TOTAL EQUIPMENT	770,000	1,169,224	1,939,224	1,355,636	519,721	63,866
76260	Total Facilities Acquisition and Constr	6,992,429	0	6,992,429	6,659,300	3,058	330,071
76380	Interest Deposit to Capital Reserve	100	0	100	0	0	100
84000	Transfer of Funds to Charter Schools	639,128	0	639,128	632,449	0	6,679
Total		109,288,527	1,598,537	110,887,065	99,295,192	1,966,412	9,625,461

Starting date 7/1/2021 Ending date 6/30/2022 Fund: 10 GENERAL FUND

Revenues:			Org Budget	Transfers	Budget Est	Actual	Over/Under	Unrealized
00100	10-1210	Local Tax Levy	51,577,965	0	51,577,965	51,577,965		0
00150	10-1320	Tuition from LEAs Within State	2,705,943	0	2,705,943	3,497,804		(791,861)
00170	10-1340	Tuition from Other Sources	0	0	0	385,010		(385,010)
00250	10-14[2-4]0	Transportation Fees from Other LEAs	0	0	0	219,637		(219,637)
00260	10-1910	Rents and Royalties	10,000	0	10,000	325	Under	9,675
00300	10-1__	Unrestricted Miscellaneous Revenues	70,600	0	70,600	539,279		(468,679)
00420	10-3121	Categorical Transportation Aid	1,156,164	0	1,156,164	1,156,164		0
00430	10-3131	Extraordinary Aid	200,000	0	200,000	1,708,652		(1,508,652)
00440	10-3132	Categorical Special Education Aid	3,528,089	0	3,528,089	3,528,089		0
00460	10-3176	Equalization Aid	38,221,252	0	38,221,252	38,221,252		0
00470	10-3177	Categorical Security Aid	1,389,418	0	1,389,418	1,389,418		0
00500	10-3__	Other State Aids	0	0	0	130,756		(130,756)
00540	10-4200	Medicaid Reimbursement	244,403	0	244,403	196,394	Under	48,009
Total			99,103,834	0	99,103,834	102,550,746		(3,446,912)

Expenditures:			Org Budget	Transfers	Adj Budget	Expended	Encumber	Available
02040	11-105-100-935	Local Contribution – Transfer to Special	695,261	0	695,261	695,261	0	0
02080	11-110-__-101	Kindergarten – Salaries of Teachers	1,284,413	(75,232)	1,209,181	1,157,761	0	51,421
02100	11-120-__-101	Grades 1-5 – Salaries of Teachers	10,028,948	(111,856)	9,917,092	9,824,578	0	92,514
02120	11-130-__-101	Grades 6-8 – Salaries of Teachers	5,704,183	71,595	5,775,778	5,543,126	0	232,652
02140	11-140-__-101	Grades 9-12 – Salaries of Teachers	7,592,003	(88,011)	7,503,991	7,295,110	0	208,881
02500	11-150-100-101	Salaries of Teachers	10,000	0	10,000	2,821	0	7,179
02540	11-150-100-320	Purchased Professional – Educational Ser	10,000	(3,000)	7,000	0	0	7,000
03000	11-190-1__-106	Other Salaries for Instruction	13,000	0	13,000	3,902	0	9,098
03020	11-190-1__-320	Purchased Professional – Educational Ser	1,033,480	(107,254)	926,226	112,902	0	813,324
03040	11-190-1__-340	Purchased Technical Services	181,700	18,752	200,452	11,874	1,523	187,055
03060	11-190-1__-[4-5]	Other Purchased Services (400-500 series	174,838	(5,903)	168,935	119,400	621	48,914
03080	11-190-1__-610	General Supplies	1,411,828	(231,238)	1,180,590	489,477	202,693	488,420
03100	11-190-1__-640	Textbooks	564,661	(272,832)	291,829	286,062	0	5,767
03120	11-190-1__-8__	Other Objects	6,580	(4,016)	2,564	2,064	0	500
04500	11-204-100-101	Salaries of Teachers	1,336,604	92,775	1,429,380	1,404,722	0	24,658
04540	11-204-100-320	Purchased Professional-Educational Servi	408,800	(48,600)	360,200	235,315	0	124,885
04600	11-204-100-610	General Supplies	4,700	(323)	4,377	3,675	0	702
06000	11-209-100-101	Salaries of Teachers	327,256	(16,111)	311,145	271,801	0	39,344
06040	11-209-100-320	Purchased Professional-Educational Servi	121,500	0	121,500	65,114	0	56,386
06100	11-209-100-610	General Supplies	800	197	997	795	0	201
06500	11-212-100-101	Salaries of Teachers	983,174	203,249	1,186,423	1,140,454	0	45,969
06540	11-212-100-320	Purchased Professional-Educational Servi	218,700	24,300	243,000	133,846	0	109,154
06600	11-212-100-610	General Supplies	17,999	5,576	23,575	17,543	5,730	303
07000	11-213-100-101	Salaries of Teachers	5,943,353	(345,890)	5,597,463	5,431,712	0	165,751
07040	11-213-100-320	Purchased Professional-Educational Servi	704,700	0	704,700	319,835	0	384,865
07100	11-213-100-610	General Supplies	32,880	7,997	40,877	21,810	12,435	6,632

Starting date 7/1/2021 Ending date 6/30/2022 Fund: 10 GENERAL FUND

Expenditures:			Org Budget	Transfers	Adj Budget	Expended	Encumber	Available
08500	11-216-100-101	Salaries of Teachers	558,949	0	558,949	524,940	0	34,009
08540	11-216-100-320	Purchased Professional-Educational Servi	243,000	0	243,000	112,617	0	130,383
08600	11-216-100-6__	General Supplies	3,900	(305)	3,595	3,051	0	544
09260	11-219-100-101	Salaries of Teachers	30,000	0	30,000	13,165	0	16,835
09300	11-219-100-320	Purchased Professional-Educational Servi	51,500	20,000	71,500	28,995	0	42,505
11000	11-230-100-101	Salaries of Teachers	490,237	14,289	504,526	429,793	0	74,733
11100	11-230-100-610	General Supplies	596	0	596	0	0	596
12000	11-240-100-101	Salaries of Teachers	321,877	12,997	334,874	330,959	0	3,915
12100	11-240-100-610	General Supplies	300	(105)	195	195	0	1
17000	11-401-100-1__	Salaries	294,000	(16,976)	277,024	264,079	0	12,946
17020	11-401-100-[3-5]	Purchased Services (300-500 series)	38,000	(18,309)	19,691	14,971	1,925	2,795
17040	11-401-100-6__	Supplies and Materials	15,000	(14,860)	140	140	0	0
17060	11-401-100-8__	Other Objects	2,500	(2,500)	0	0	0	0
17500	11-402-100-1__	Salaries	582,583	16,976	599,559	568,988	0	30,571
17520	11-402-100-[3-5]	Purchased Services (300-500 series)	90,000	13,670	103,670	94,026	1,120	8,524
17540	11-402-100-6__	Supplies and Materials	115,600	12,350	127,950	95,170	27,807	4,972
17560	11-402-100-8__	Other Objects	28,500	3,528	32,028	31,523	216	289
29000	11-000-100-561	Tuition to Other LEAs within the State -	559,776	(294,246)	265,530	214,663	30,657	20,210
29020	11-000-100-562	Tuition to Other LEAs within the State -	263,824	364,853	628,678	573,492	36,140	19,045
29040	11-000-100-563	Tuition to County Voc. School District-R	1,222,306	0	1,222,306	1,221,015	0	1,291
29080	11-000-100-565	Tuition to CSSD & Regular Day Schools	834,461	417,271	1,251,732	1,174,588	1,024	76,120
29100	11-000-100-566	Tuition to Priv. School for the Disabled	4,563,679	2,334,726	6,898,405	6,659,157	0	239,248
29140	11-000-100-568	Tuition – State Facilities	39,872	0	39,872	39,872	0	0
29160	11-000-100-569	Tuition – Other	249,117	0	249,117	201,000	0	48,117
29500	11-000-211-1__	Salaries	61,850	0	61,850	61,669	0	181
29660	11-000-211-8__	Other Objects	45,000	(3,500)	41,500	200	0	41,300
30500	11-000-213-1__	Salaries	772,202	(39,220)	732,982	700,075	0	32,907
30540	11-000-213-3__	Purchased Professional and Technical Ser	56,833	48,672	105,505	92,369	6,435	6,701
30560	11-000-213-[4-5]	Other Purchased Services (400-500 series)	400	(400)	0	0	0	0
30580	11-000-213-6__	Supplies and Materials	22,900	(1,614)	21,286	18,987	458	1,841
40500	11-000-216-1__	Salaries	1,614,831	18,690	1,633,521	1,595,069	0	38,452
40520	11-000-216-320	Purchased Professional – Educational Ser	455,119	(73,893)	381,226	311,420	16,535	53,271
40540	11-000-216-6__	Supplies and Materials	1,000	0	1,000	181	0	819
41020	11-000-217-320	Purchased Professional – Educational Ser	4,367,817	(1,866,840)	2,500,977	1,524,963	4,839	971,175
41500	11-000-218-104	Salaries of Other Professional Staff	1,035,985	119,528	1,155,513	1,151,356	0	4,157
41520	11-000-218-105	Salaries of Secretarial and Clerical Ass	137,642	5,617	143,259	143,144	0	115
41580	11-000-218-390	Other Purchased Professional & Technical	9,000	(4,848)	4,152	4,152	0	0
41600	11-000-218-[4-5]	Other Purchased Services (400-500 series)	5,570	(2,973)	2,597	2,597	0	0
41620	11-000-218-6__	Supplies and Materials	7,400	1,819	9,219	7,847	317	1,055
41640	11-000-218-8__	Other Objects	3,000	(2,365)	635	635	0	0
42000	11-000-219-104	Salaries of Other Professional Staff	2,377,365	(33,278)	2,344,087	2,284,621	0	59,466

Starting date 7/1/2021 Ending date 6/30/2022 Fund: 10 GENERAL FUND

Expenditures:			Org Budget	Transfers	Adj Budget	Expended	Encumber	Available
42020	11-000-219-105	Salaries of Secretarial and Clerical Ass	311,805	2,941	314,746	314,203	0	543
42100	11-000-219-[4-5]	Other Purchased Services (400-500 series	30,000	0	30,000	6,129	0	23,871
42140	11-000-219-592	Misc. Purch. Svc. (400-500 series O/than	11,336	0	11,336	5,195	0	6,141
42160	11-000-219-6__	Supplies and Materials	51,025	3,741	54,766	48,632	4,261	1,873
43000	11-000-221-102	Salaries of Supervisor of Instruction	485,130	(1,342)	483,788	462,155	0	21,633
43020	11-000-221-104	Salaries of Other Professional Staff	100	0	100	0	0	100
43040	11-000-221-105	Salaries of Secretarial & Clerical Assis	64,533	1,342	65,875	65,875	0	0
43060	11-000-221-110	Other Salaries	12,000	60,000	72,000	14,999	0	57,001
43100	11-000-221-320	Purchased Prof. – Educational Services	20,000	(4,007)	15,993	14,493	1,500	0
43120	11-000-221-390	Other Purch. Professional & Technical Se	165,000	(300)	164,700	135,415	390	28,895
43140	11-000-221-[4-5]	Other Purch. Services (400-500 series)	10,598	1,000	11,598	5,820	2,367	3,411
43160	11-000-221-6__	Supplies and Materials	6,720	(1,294)	5,426	5,426	0	0
43180	11-000-221-8__	Other Objects	4,280	0	4,280	2,535	0	1,745
43500	11-000-222-1__	Salaries	301,009	235,169	536,178	512,553	0	23,625
43540	11-000-222-3__	Purchased Professional and Technical Ser	145,800	(145,800)	0	0	0	0
43560	11-000-222-[4-5]	Other Purchased Services (400-500 series	9,554	1,692	11,246	7,196	0	4,050
43580	11-000-222-6__	Supplies and Materials	17,150	230,124	247,274	10,950	234,875	1,448
44060	11-000-223-110	Other Salaries	40,000	(30,000)	10,000	5,963	0	4,038
44080	11-000-223-320	Purchased Professional – Educational Ser	40,000	(30,000)	10,000	0	0	10,000
44120	11-000-223-[4-5]	Other Purch. Services (400-500 series)	4,500	(1,394)	3,106	775	0	2,331
45000	11-000-230-1__	Salaries	327,717	600	328,317	328,317	0	0
45040	11-000-230-331	Legal Services	200,000	25,000	225,000	188,650	29,984	6,366
45060	11-000-230-332	Audit Fees	80,000	0	80,000	60,374	0	19,626
45080	11-000-230-334	Architectural/Engineering Services	80,000	10,456	90,456	46,400	17,535	26,520
45100	11-000-230-339	Other Purchased Professional Services	23,400	0	23,400	4,290	0	19,110
45140	11-000-230-530	Communications/Telephone	501,232	(19,884)	481,348	259,613	5,624	216,111
45160	11-000-230-585	BOE Other Purchased Services	12,500	0	12,500	2,470	0	10,030
45180	11-000-230-590	Misc Purch Services (400-500 series, O/T	102,900	750	103,650	84,639	2,200	16,811
45200	11-000-230-610	General Supplies	25,500	1,000	26,500	5,075	2,194	19,230
45240	11-000-230-820	Judgments against the School District	205,000	0	205,000	0	0	205,000
45260	11-000-230-890	Miscellaneous Expenditures	15,000	0	15,000	7,395	0	7,606
45280	11-000-230-895	BOE Membership Dues and Fees	35,000	0	35,000	30,039	0	4,961
46000	11-000-240-103	Salaries of Principals/Assistant Princip	2,190,239	76,809	2,267,048	2,263,322	0	3,726
46020	11-000-240-104	Salaries of Other Professional Staff	293,730	9,945	303,675	303,675	0	0
46040	11-000-240-105	Salaries of Secretarial and Clerical Ass	1,168,352	(38,154)	1,130,198	1,093,600	0	36,598
46080	11-000-240-3__	Purchased Professional and Technical Ser	500	(500)	0	0	0	0
46100	11-000-240-[4-5]	Other Purchased Services (400-500 series	55,464	(500)	54,964	11,719	1,865	41,380
46120	11-000-240-6__	Supplies and Materials	55,800	24,570	80,370	58,352	5,451	16,567
46140	11-000-240-8__	Other Objects	22,470	(1,120)	21,350	17,531	0	3,819
47000	11-000-251-1__	Salaries	1,106,883	(4,060)	1,102,823	1,008,634	0	94,189
47020	11-000-251-330	Purchased Professional Services	152,000	0	152,000	13,302	1,000	137,698

Starting date 7/1/2021 Ending date 6/30/2022 Fund: 10 GENERAL FUND

Expenditures:			Org Budget	Transfers	Adj Budget	Expended	Encumber	Available
47040	11-000-251-340	Purchased Technical Services	46,500	0	46,500	25,775	0	20,725
47060	11-000-251-592	Misc. Purch. Services (400-500 Series, O	39,954	14,002	53,956	40,510	4,464	8,982
47100	11-000-251-6__	Supplies and Materials	91,000	(10,000)	81,000	21,761	75	59,165
47180	11-000-251-890	Other Objects	11,000	0	11,000	2,378	0	8,622
47500	11-000-252-1__	Salaries	209,939	4,060	213,999	213,997	0	2
47540	11-000-252-340	Purchased Technical Services	446,000	54,448	500,448	427,119	37,008	36,321
47560	11-000-252-[4-5]	Other Purchased Services (400-500 series	131,109	(11,929)	119,180	40,255	24,150	54,776
47580	11-000-252-6__	Supplies and Materials	10,000	0	10,000	2,321	0	7,679
48520	11-000-261-420	Cleaning, Repair, and Maintenance Servic	380,000	559,486	939,486	625,520	263,258	50,707
49000	11-000-262-1__	Salaries	56,504	2,355	58,859	58,859	0	0
49040	11-000-262-3__	Purchased Professional and Technical Ser	29,800	442	30,242	29,376	866	0
49060	11-000-262-420	Cleaning, Repair, and Maintenance Svc.	4,005,200	(69,891)	3,935,309	3,893,954	4,534	36,821
49120	11-000-262-490	Other Purchased Property Services	325,000	0	325,000	268,600	0	56,400
49140	11-000-262-520	Insurance	525,000	87,000	612,000	611,800	0	200
49180	11-000-262-610	General Supplies	410,000	166,744	576,744	477,234	94,335	5,174
49200	11-000-262-621	Energy (Natural Gas)	495,000	(47,808)	447,192	427,952	0	19,240
49220	11-000-262-622	Energy (Electricity)	1,247,000	(39,192)	1,207,808	1,165,608	0	42,200
49240	11-000-262-624	Energy (Oil)	15,000	0	15,000	9,366	0	5,634
50040	11-000-263-420	Cleaning, Repair, and Maintenance Svc.	295,000	(146,116)	148,884	91,749	47,567	9,568
50060	11-000-263-610	General Supplies	10,000	2,177	12,177	12,000	0	177
51000	11-000-266-1__	Salaries	81,302	0	81,302	81,298	0	4
51060	11-000-266-610	General Supplies	51,000	0	51,000	0	990	50,010
52020	11-000-270-160	Sal. For Pupil Trans (Bet Home & Sch) -	2,611,622	(235,085)	2,376,537	2,254,530	0	122,007
52040	11-000-270-161	Sal. For Pupil Trans (Bet Home & Sch) -	271,140	235,085	506,225	456,494	0	49,731
52100	11-000-270-350	Management Fee - ESC & CTSA Trans. Prog	75,000	124,720	199,720	199,720	0	0
52120	11-000-270-390	Other Purchased Prof. and Technical Serv	314,200	45,800	360,000	344,503	8,718	6,779
52140	11-000-270-420	Cleaning, Repair, & Maint. Services	294,418	139,464	433,882	218,878	152,550	62,453
52160	11-000-270-442	Rental Payments - School Buses	5,000	(5,000)	0	0	0	0
52200	11-000-270-503	Contract Serv.-Aid in Lieu Pymts-Non-Pub	325,000	121,724	446,724	429,224	6,500	11,000
52220	11-000-270-504	Contract Serv-Aid in Lieu Pymts-Charter	3,000	62,500	65,500	64,500	1,000	0
52240	11-000-270-505	Contract Serv-Aid in Lieu Pymts-Choice S	150,000	(76,500)	73,500	66,500	2,000	5,000
52260	11-000-270-511	Contract Services (Bet. Home & Sch) -Ven	2,500	(2,500)	0	0	0	0
52300	11-000-270-513	Contr Serv (Bet. Home & Sch) - Joint Agr	360	0	360	0	0	360
52320	11-000-270-514	Contract Serv. (Sp Ed Stds) - Vendors	50,000	19,840	69,840	64,620	3,960	1,260
52360	11-000-270-517	Contract Serv. (Reg. Students) - ESCs &	814,000	197,629	1,011,629	1,007,462	0	4,167
52380	11-000-270-518	Contract Serv. (Spl. Ed. Students) - ESC	860,000	915,245	1,775,245	1,708,546	15,635	51,064
52400	11-000-270-593	Misc. Purchased Services - Transportatio	300,000	(22,000)	278,000	162,832	22,202	92,966
52420	11-000-270-610	General Supplies	20,000	661	20,661	11,472	5,413	3,776
52440	11-000-270-615	Transportation Supplies	1,796,123	(877,536)	918,587	878,853	9,356	30,378
52460	11-000-270-8__	Other objects	26,083	0	26,083	14,380	248	11,454
71020	11-000-291-220	Social Security Contributions	776,688	0	776,688	531,920	0	244,768

Starting date 7/1/2021 Ending date 6/30/2022 Fund: 10 GENERAL FUND

Expenditures:			Org Budget	Transfers	Adj Budget	Expended	Encumber	Available
71060	11-000-291-241	Other Retirement Contributions - PERS	850,000	0	850,000	793,650	0	56,350
71140	11-000-291-250	Unemployment Compensation	250,000	0	250,000	172,131	0	77,869
71160	11-000-291-260	Workmen's Compensation	900,000	(201,000)	699,000	565,167	0	133,833
71180	11-000-291-270	Health Benefits	11,330,850	(1,180,496)	10,150,354	8,998,297	379	1,151,678
71200	11-000-291-280	Tuition Reimbursement	150,000	0	150,000	55,699	0	94,301
71220	11-000-291-290	Other Employee Benefits	1,030,000	51,270	1,081,270	628,642	78,700	373,928
72180	10-606- -	Interest Earned on Maintenance Reserve	500	0	500	0	0	500
73040	12-120-100-73_	Grades 1-5	0	5,311	5,311	0	5,311	0
73080	12-140-100-73_	Grades 9-12	0	69,648	69,648	29,332	30,779	9,537
74140	12-213-100-73_	Resource Room/Resource Center	0	5,995	5,995	0	5,995	0
75080	12-4__-100-73_	School-Sponsored and Other Instructional	0	2,691	2,691	0	2,691	0
75580	12-000-219-73_	Undist. Expend. - Support Serv. - Studen	0	15,856	15,856	8,888	6,967	0
75600	12-000-220-73_	Undist. Expend. - Support Serv. - Inst.	0	30,452	30,452	8,092	22,361	0
75660	12-000-251-73_	Undistributed Expenditures - Central Ser	0	5,352	5,352	5,352	0	0
75680	12-000-252-73_	Undistributed Expenditures - Admin. Info	0	112,771	112,771	99,963	7,560	5,249
75720	12-000-262-73_	Undist. Expend. - Custodial Services	0	12,065	12,065	12,065	0	0
75740	12-000-263-73_	Undist. Expend. - Care and Upkeep of Gro	0	31,186	31,186	31,186	0	0
75760	12-000-266-73_	Undist. Expend. - Security	0	29,900	29,900	0	29,831	69
75780	12-000-270-732	Undist. Expend. Student Trans. - Non-Ins	0	13,045	13,045	13,045	0	0
75800	12-000-270-733	School Buses - Regular	550,000	626,026	1,176,026	1,147,714	0	28,312
75820	12-000-270-734	School Buses - Special	220,000	208,926	428,926	0	408,226	20,700
76040	12-000-400-334	Architectural/Engineering Services	2,031,578	(1,963,778)	67,800	5,871	3,058	58,871
76080	12-000-400-450	Construction Services	4,037,092	(3,811,092)	226,000	0	0	226,000
76200	12-000-400-800	Other Objects	897,716	(852,516)	45,200	0	0	45,200
76210	12-000-400-896	Assessment for Debt Service on SDA Fundi	26,043	0	26,043	26,043	0	0
76240	12-000-400-932	Capital Outlay - Transfer to Capital Pro	0	6,627,386	6,627,386	6,627,386	0	0
76380	10-604- -	Interest Deposit to Capital Reserve	100	0	100	0	0	100
84000	10-000-100-56_	Transfer of Funds to Charter Schools	639,128	0	639,128	632,449	0	6,679
Total			109,288,527	1,598,537	110,887,065	99,295,192	1,966,412	9,625,461

Starting date 7/1/2021 Ending date 6/30/2022 Fund: 20 SPECIAL REVENUE FUNDS

Assets and Resources

Assets:

101	Cash in bank		\$0.00
102 - 106	Cash Equivalents		\$0.00
111	Investments		\$0.00
116	Capital Reserve Account		\$0.00
117	Maintenance Reserve Account		\$0.00
118	Emergency Reserve Account		\$0.00
121	Tax levy Receivable		\$0.00

Accounts Receivable:

132	Interfund	\$0.00	
141	Intergovernmental - State	\$47,210.80	
142	Intergovernmental - Federal	\$14,964,588.29	
143	Intergovernmental - Other	\$20,000.00	
153, 154	Other (net of estimated uncollectable of \$_____)	\$0.00	\$15,031,799.09

Loans Receivable:

131	Interfund	\$0.00	
151, 152	Other (Net of estimated uncollectable of \$_____)	\$0.00	\$0.00

Other Current Assets

\$0.00

Resources:

301	Estimated revenues	\$15,747,495.19	
302	Less revenues	(\$15,203,940.87)	\$543,554.32

Total assets and resources

\$15,575,353.41



Starting date 7/1/2021 Ending date 6/30/2022 Fund: 20 SPECIAL REVENUE FUNDS

Liabilities and Fund Equity

Liabilities:

411	Intergovernmental accounts payable - state			( <b>\$0.06</b> )
421	Accounts payable			\$142,427.24
431	Contracts payable			\$0.00
451	Loans payable			\$0.00
481	Deferred revenues			\$273,117.56
	Other current liabilities			\$980,155.07
	<b>Total liabilities</b>			<b>\$1,395,699.81</b>

Fund Balance:

Appropriated:

753,754	Reserve for encumbrances			\$1,056,907.76
761	Capital reserve account - July	\$0.00		
604	Add: Increase in capital reserve	\$0.00		
307	Less: Bud. w/d cap. reserve eligible costs	\$0.00		
309	Less: Bud. w/d cap. reserve excess costs	\$0.00	\$0.00	
764	Maintenance reserve account - July	\$0.00		
606	Add: Increase in maintenance reserve	\$0.00		
310	Less: Bud. w/d from maintenance reserve	\$0.00	\$0.00	
766	Reserve for Cur. Exp. Emergencies - July	\$0.00		
607	Add: Increase in cur. exp. emer. reserve	\$0.00		
312	Less: Bud. w/d from cur. exp. emer. reserve	\$0.00	\$0.00	
762	Reserve for Adult Education			\$0.00
750-752,76x	Other reserves			\$0.00
601	Appropriations	\$21,481,858.53		
602	Less: Expenditures	( <b>\$7,302,204.93</b> )		
	Less: Encumbrances	( <b>\$1,056,907.76</b> )	( <b>\$8,359,112.69</b> )	\$13,122,745.84
	<b>Total appropriated</b>			<b>\$14,179,653.60</b>
Unappropriated:				
770	Fund balance, July 1			\$0.00
771	Designated fund balance			\$0.00
303	Budgeted fund balance			\$0.00
	<b>Total fund balance</b>			<b>\$14,179,653.60</b>
	<b>Total liabilities and fund equity</b>			<b><u>\$15,575,353.41</u></b>

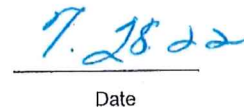
Starting date 7/1/2021 Ending date 6/30/2022 Fund: 20 SPECIAL REVENUE FUNDS

Recapitulation of Budgeted Fund Balance:

	<u>Budgeted</u>	<u>Actual</u>	<u>Variance</u>
Appropriations	\$21,481,858.53	\$8,359,112.69	\$13,122,745.84
Revenues	(\$15,747,495.19)	(\$15,203,940.87)	(\$543,554.32)
Subtotal	<u>\$5,734,363.34</u>	<u>(\$6,844,828.18)</u>	<u>\$12,579,191.52</u>
Change in capital reserve account:			
Plus - Increase in reserve	\$0.00	\$0.00	\$0.00
Less - Withdrawal from reserve	\$0.00	\$0.00	\$0.00
Subtotal	<u>\$5,734,363.34</u>	<u>(\$6,844,828.18)</u>	<u>\$12,579,191.52</u>
Change in maintenance reserve account:			
Plus - Increase in reserve	\$0.00	\$0.00	\$0.00
Less - Withdrawal from reserve	\$0.00	\$0.00	\$0.00
Subtotal	<u>\$5,734,363.34</u>	<u>(\$6,844,828.18)</u>	<u>\$12,579,191.52</u>
Change in emergency reserve account:			
Plus - Increase in reserve	\$0.00	\$0.00	\$0.00
Less - Withdrawal from reserve	\$0.00	\$0.00	\$0.00
Subtotal	<u>\$5,734,363.34</u>	<u>(\$6,844,828.18)</u>	<u>\$12,579,191.52</u>
Less: Adjustment for prior year	(\$5,734,363.34)	(\$5,734,363.34)	\$0.00
Budgeted fund balance	<u>\$0.00</u>	<u>(\$12,579,191.52)</u>	<u>\$12,579,191.52</u>

Prepared and submitted by :

  
Board Secretary

  
Date

Starting date 7/1/2021 Ending date 6/30/2022 Fund: 20 SPECIAL REVENUE FUNDS

Revenues:		Org Budget	Transfers	Budget Est	Actual	Over/Under	Unrealized
00745	Total Revenues from Local Sources	510,000	84,855	594,855	84,855	Under	510,000
00770	Total Revenues from State Sources	932,086	241,701	1,173,787	1,173,787		0
00830	Total Revenues from Federal Sources	2,696,623	10,586,969	13,283,592	13,250,038	Under	33,554
0083A	Other	695,261	0	695,261	695,261		0
	<b>Total</b>	<b>4,833,970</b>	<b>10,913,525</b>	<b>15,747,495</b>	<b>15,203,941</b>		<b>543,554</b>

Expenditures:		Org Budget	Transfers	Adj Budget	Expended	Encumber	Available
84100	Local Projects	0	115,439	115,439	65,218	13,233	36,988
84200	Student Activity Fund	510,000	0	510,000	0	0	510,000
85120	Total Instruction	699,720	0	699,720	681,850	0	17,870
86380	Total Support Services	593,485	0	593,485	466,086	0	127,399
88000	Nonpublic Textbooks	4,301	861	5,162	4,812	0	351
88020	Nonpublic Auxiliary Services	80,866	21,432	102,298	57,693	0	44,605
88060	Nonpublic Nursing Services	7,181	2,451	9,632	9,632	0	0
88080	Nonpublic Technology Initiative	2,007	1,605	3,612	3,499	0	113
88140	Other	12,320	5,280	17,600	17,488	0	112
88740	Total Federal Projects	2,924,090	16,500,820	19,424,910	5,995,929	1,043,675	12,385,307
	<b>Total</b>	<b>4,833,970</b>	<b>16,647,888</b>	<b>21,481,859</b>	<b>7,302,205</b>	<b>1,056,908</b>	<b>13,122,746</b>

Starting date 7/1/2021 Ending date 6/30/2022 Fund: 20 SPECIAL REVENUE FUNDS

Revenues:			Org Budget	Transfers	Budget Est	Actual	Over/Under	Unrealized
00737	20-1760	Student Activity Fund Revenue	510,000	0	510,000	0	Under	510,000
00740	20-1__	Other Revenue from Local Sources	0	84,855	84,855	84,855		0
00760	20-3218	Preschool Education Aid	472,108	0	472,108	472,108		0
00765	20-32__	Other Restricted Entitlements	459,978	241,701	701,679	701,679		0
00775	20-441[1-6]	Title I	1,214,717	132,277	1,346,994	1,346,994		0
00780	20-445[1-5]	Title II	101,338	151,898	253,236	221,704	Under	31,532
00785	20-449[1-4]	Title III	17,962	9,902	27,864	27,864		0
00790	20-447[1-4]	Title IV	71,037	17,134	88,171	88,171		0
00803	20-4409	ARP - IDEA Preschool	0	20,842	20,842	20,842		0
00804	20-4419	ARP - IDEA Basic	0	245,408	245,408	245,408		0
00805	20-442[0-9]	I.D.E.A. Part B (Handicapped)	1,112,616	209,744	1,322,360	1,322,360		0
00806	20-4541	ARP ESSER Accel. Learning Coaching Supt	0	472,946	472,946	472,946		0
00807	20-4542	ARP ESSER Evidence Based Summer Enrich	0	40,000	40,000	40,000		0
00808	20-4543	ARP ESSER Evidence Based Bynd Sch Day	0	40,000	40,000	40,000		0
00809	20-4544	ARP ESSER NJTSS Mental Health Support	0	45,000	45,000	45,000		0
00810	20-4430	Vocational Education	46,358	29,777	76,135	74,113	Under	2,022
00814	20-4540	ARP - ESSER	0	8,898,152	8,898,152	8,898,152		0
00816	20-4530	CARES Act Education Stabilization Fund	0	0	0	0		0
00823	20-4534	CRRSA Act - ESSER II	0	0	0	0		0
00824	20-4535	CRRSA Act - Learning Acceleration Grant	0	0	0	0		0
00825	20-4__	Other	132,595	(62,918)	69,677	69,677		0
00826	20-4536	CRRSA Act - Mental Health Grant	0	0	0	0		0
00827	20-4537	ACSERS - Special Education	0	285,617	285,617	285,617		0
00829	20-4546	ARP Homeless Children and Youth II	0	51,190	51,190	51,190		0
00835	20-5200	Transfers from Operating Budget – Presch	695,261	0	695,261	695,261		0
Total			4,833,970	10,913,525	15,747,495	15,203,941		543,554

Expenditures:

			Org Budget	Transfers	Adj Budget	Expended	Encumber	Available
84100	20-__-__-__	Local Projects	0	115,439	115,439	65,218	13,233	36,988
84200	20-475-__-__	Student Activity Fund	510,000	0	510,000	0	0	510,000
85000	20-218-100-101	Salaries of Teachers	647,720	34,130	681,850	681,850	0	0
85080	20-218-100-6__	General Supplies	52,000	(34,130)	17,870	0	0	17,870
86020	20-218-200-103	Salaries of Program Directors	36,000	(1,395)	34,605	7,619	0	26,986
86060	20-218-200-105	Salaries of Secr. And Clerical Assistant	28,718	1,395	30,113	30,113	0	0
86140	20-218-200-200	Personnel Services – Employee Benefits	258,967	0	258,967	232,381	0	26,586
86200	20-218-200-329	Purchased Professional – Educational Ser	267,300	0	267,300	195,973	0	71,327
86300	20-218-200-516	Contr. Trans. Serv. (Field Trips)	1,000	0	1,000	0	0	1,000
86360	20-218-200-8__	Other Objects	1,500	0	1,500	0	0	1,500
88000	20-501-__-__	Nonpublic Textbooks	4,301	861	5,162	4,812	0	351
88020	20-50[-2-5-]__	Nonpublic Auxiliary Services	80,866	21,432	102,298	57,693	0	44,605
88060	20-509-__-__	Nonpublic Nursing Services	7,181	2,451	9,632	9,632	0	0
88080	20-510-__-__	Nonpublic Technology Initiative	2,007	1,605	3,612	3,499	0	113

Starting date 7/1/2021 Ending date 6/30/2022 Fund: 20 SPECIAL REVENUE FUNDS

Expenditures:			Org Budget	Transfers	Adj Budget	Expended	Encumber	Available
88140	20-__-__-__	Other	12,320	5,280	17,600	17,488	0	112
88500	20-__-__-__	Title I	1,214,717	346,535	1,561,252	917,334	371,055	272,863
88520	20-__-__-__	Title II	69,806	204,275	274,081	66,563	8,000	199,518
88540	20-__-__-__	Title III	17,962	19,975	37,937	21,969	2,382	13,587
88560	20-__-__-__	Title IV	71,037	48,826	119,863	85,370	0	34,493
88600	20-__-__-__	Title VI	0	9,506	9,506	2,700	0	6,806
88620	20-__-__-__	I.D.E.A. Part B (Handicapped)	1,112,616	621,464	1,734,080	1,500,250	68,945	164,885
88641	20-223-__-__	ARP-IDEA Basic Grant Program	0	245,408	245,408	223,811	5,583	16,015
88642	20-224-__-__	ARP-IDEA Preschool Grant Program	0	20,842	20,842	20,653	0	189
88678	20-477-__-__	CARES Act Education Stabilization Fund	0	703,128	703,128	703,128	0	0
88700	20-__-__-__	Other	437,952	189,626	627,578	466,997	64,774	95,807
88709	20-483-__-__	CRRSA Act - ESSER II Grant Program	0	3,959,247	3,959,247	861,290	422,015	2,675,942
88710	20-484-__-__	CRRSA Act - Learning Acceleration Grant	0	254,084	254,084	22,591	6,959	224,535
88711	20-485-__-__	CRRSA Act - Mental Health Grant	0	45,000	45,000	43,550	0	1,450
88712	20-486-__-__	ACSERS - Special Education	0	285,617	285,617	271,771	0	13,846
88713	20-487-__-__	ARP-ESSER Grant Program	0	8,898,152	8,898,152	787,953	76,033	8,034,165
88714	20-488-__-__	ARP ESSER Accel. Learning Coaching Supt	0	472,946	472,946	0	17,930	455,016
88715	20-489-__-__	ARP ESSER Evidence Based Summer Enric	0	40,000	40,000	0	0	40,000
88716	20-490-__-__	ARP ESSER Evidence Based Bynd Sch Day	0	40,000	40,000	0	0	40,000
88717	20-491-__-__	ARP ESSER NJTSS Mental Health Support	0	45,000	45,000	0	0	45,000
88719	20-496-__-__	ARP Homeless Children and Youth II	0	51,190	51,190	0	0	51,190
Total			4,833,970	16,647,888	21,481,859	7,302,205	1,056,908	13,122,746

Starting date 7/1/2021 Ending date 6/30/2022 Fund: 30 CAPITAL PROJECTS FUNDS

Assets and Resources

Assets:			
101	Cash in bank		\$7,951,080.31
102 - 106	Cash Equivalents		\$0.00
111	Investments		\$0.00
116	Capital Reserve Account		\$0.00
117	Maintenance Reserve Account		\$0.00
118	Emergency Reserve Account		\$0.00
121	Tax levy Receivable		\$0.00
Accounts Receivable:			
132	Interfund	\$0.00	
141	Intergovernmental - State	\$2,363,895.00	
142	Intergovernmental - Federal	\$0.00	
143	Intergovernmental - Other	\$0.00	
153, 154	Other (net of estimated uncollectable of \$_____)	\$0.00	\$2,363,895.00
Loans Receivable:			
131	Interfund	\$0.00	
151, 152	Other (Net of estimated uncollectable of \$_____)	\$0.00	\$0.00
Other Current Assets			\$0.00
Resources:			
301	Estimated revenues	\$6,886,692.00	
302	Less revenues	(\$6,886,692.00)	\$0.00
Total assets and resources			<u>\$10,314,975.31</u>

Starting date 7/1/2021 Ending date 6/30/2022 Fund: 30 CAPITAL PROJECTS FUNDS

Liabilities and Fund Equity

Liabilities:

411	Intergovernmental accounts payable - state		\$0.00
421	Accounts payable		\$249,205.75
431	Contracts payable		\$0.00
451	Loans payable		\$0.00
481	Deferred revenues		\$0.00
	Other current liabilities		\$0.00
	<b>Total liabilities</b>		<b>\$249,205.75</b>

Fund Balance:

Appropriated:

753,754	Reserve for encumbrances		\$2,854,737.98
761	Capital reserve account - July	\$0.00	
604	Add: Increase in capital reserve	\$0.00	
307	Less: Bud. w/d cap. reserve eligible costs	\$0.00	
309	Less: Bud. w/d cap. reserve excess costs	\$0.00	\$0.00
764	Maintenance reserve account - July	\$0.00	
606	Add: Increase in maintenance reserve	\$0.00	
310	Less: Bud. w/d from maintenance reserve	\$0.00	\$0.00
766	Reserve for Cur. Exp. Emergencies - July	\$0.00	
607	Add: Increase in cur. exp. emer. reserve	\$0.00	
312	Less: Bud. w/d from cur. exp. emer. reserve	\$0.00	\$0.00
762	Reserve for Adult Education		\$0.00
750-752,76x	Other reserves		\$0.00
601	Appropriations	\$11,055,525.89	
602	Less: Expenditures	(\$989,756.33)	
	Less: Encumbrances	(\$2,854,737.98)	(\$3,844,494.31)
	<b>Total appropriated</b>		<b>\$7,211,031.58</b>
			<b>\$10,065,769.56</b>

Unappropriated:

770	Fund balance, July 1		\$0.00
771	Designated fund balance		\$0.00
303	Budgeted fund balance		\$0.00
	<b>Total fund balance</b>		<b>\$10,065,769.56</b>
	<b>Total liabilities and fund equity</b>		<b><u>\$10,314,975.31</u></b>

Starting date 7/1/2021 Ending date 6/30/2022 Fund: 30 CAPITAL PROJECTS FUNDS

Recapitulation of Budgeted Fund Balance:

	<u>Budgeted</u>	<u>Actual</u>	<u>Variance</u>
Appropriations	\$11,055,525.89	\$3,844,494.31	\$7,211,031.58
Revenues	(\$6,886,692.00)	(\$6,886,692.00)	\$0.00
Subtotal	<u>\$4,168,833.89</u>	<u>(\$3,042,197.69)</u>	<u>\$7,211,031.58</u>
Change in capital reserve account:			
Plus - Increase in reserve	\$0.00	\$0.00	\$0.00
Less - Withdrawal from reserve	\$0.00	\$0.00	\$0.00
Subtotal	<u>\$4,168,833.89</u>	<u>(\$3,042,197.69)</u>	<u>\$7,211,031.58</u>
Change in maintenance reserve account:			
Plus - Increase in reserve	\$0.00	\$0.00	\$0.00
Less - Withdrawal from reserve	\$0.00	\$0.00	\$0.00
Subtotal	<u>\$4,168,833.89</u>	<u>(\$3,042,197.69)</u>	<u>\$7,211,031.58</u>
Change in emergency reserve account:			
Plus - Increase in reserve	\$0.00	\$0.00	\$0.00
Less - Withdrawal from reserve	\$0.00	\$0.00	\$0.00
Subtotal	<u>\$4,168,833.89</u>	<u>(\$3,042,197.69)</u>	<u>\$7,211,031.58</u>
Less: Adjustment for prior year	(\$4,168,833.89)	(\$4,168,833.89)	\$0.00
Budgeted fund balance	<u>\$0.00</u>	<u>(\$7,211,031.58)</u>	<u>\$7,211,031.58</u>

Prepared and submitted by:

  
Board Secretary

7.28.22

Date



Starting date 7/1/2021 Ending date 6/30/2022 Fund: 30 CAPITAL PROJECTS FUNDS

Revenues:		Org Budget	Transfers	Budget Est	Actual	Over/Under	Unrealized
(Total of Accounts W/O a Grid# Assigned)		0	6,886,692	6,886,692	6,886,692		0
Total		0	6,886,692	6,886,692	6,886,692		0
Expenditures:		Org Budget	Transfers	Adj Budget	Expended	Encumber	Available
(Total of Accounts W/O a Grid# Assigned)		0	7,715,834	7,715,834	989,756	2,854,738	3,871,340
89200	TOTAL CAPITAL PROJECT FUNDS	0	3,339,692	3,339,692	0	0	3,339,692
Total		0	11,055,526	11,055,526	989,756	2,854,738	7,211,032

Starting date 7/1/2021 Ending date 6/30/2022 Fund: 30 CAPITAL PROJECTS FUNDS

Revenues:		Org Budget	Transfers	Budget Est	Actual	Over/Under	Unrealized
		0	6,886,692	6,886,692	6,886,692		0
Total		0	6,886,692	6,886,692	6,886,692		0

Expenditures:		Org Budget	Transfers	Adj Budget	Expended	Encumber	Available
		0	7,715,834	7,715,834	989,756	2,854,738	3,871,340
89080	30-000-4__-45_ Construction Services	0	3,306,363	3,306,363	0	0	3,306,363
89180	30-000-4__-8_ Other Objects	0	33,329	33,329	0	0	33,329
Total		0	11,055,526	11,055,526	989,756	2,854,738	7,211,032

Starting date 7/1/2021 Ending date 6/30/2022 Fund: 40 DEBT SERVICE FUNDS

---

Assets and Resources

Assets:			
101	Cash in bank		\$0.00
102 - 106	Cash Equivalents		\$0.00
111	Investments		\$0.00
116	Capital Reserve Account		\$0.00
117	Maintenance Reserve Account		\$0.00
118	Emergency Reserve Account		\$0.00
121	Tax levy Receivable		\$0.00
Accounts Receivable:			
132	Interfund	\$0.00	
141	Intergovernmental - State	\$0.00	
142	Intergovernmental - Federal	\$0.00	
143	Intergovernmental - Other	\$0.00	
153, 154	Other (net of estimated uncollectable of \$_____)	\$0.00	\$0.00
Loans Receivable:			
131	Interfund	\$0.00	
151, 152	Other (Net of estimated uncollectable of \$_____)	\$0.00	\$0.00
Other Current Assets			\$0.00
Resources:			
301	Estimated revenues	\$0.00	
302	Less revenues	\$0.00	\$0.00
Total assets and resources			<u>\$0.00</u>

Starting date 7/1/2021 Ending date 6/30/2022 Fund: 40 DEBT SERVICE FUNDS

Liabilities and Fund Equity

Liabilities:

411	Intergovernmental accounts payable - state			\$0.00
421	Accounts payable			\$0.00
431	Contracts payable			\$0.00
451	Loans payable			\$0.00
481	Deferred revenues			\$0.00
	Other current liabilities			\$0.00
	<b>Total liabilities</b>			<b>\$0.00</b>

Fund Balance:

Appropriated:

753,754	Reserve for encumbrances			\$0.00
761	Capital reserve account - July	\$0.00		
604	Add: Increase in capital reserve	\$0.00		
307	Less: Bud. w/d cap. reserve eligible costs	\$0.00		
309	Less: Bud. w/d cap. reserve excess costs	\$0.00	\$0.00	
764	Maintenance reserve account - July	\$0.00		
606	Add: Increase in maintenance reserve	\$0.00		
310	Less: Bud. w/d from maintenance reserve	\$0.00	\$0.00	
766	Reserve for Cur. Exp. Emergencies - July	\$0.00		
607	Add: Increase in cur. exp. emer. reserve	\$0.00		
312	Less: Bud. w/d from cur. exp. emer. reserve	\$0.00	\$0.00	
762	Reserve for Adult Education		\$0.00	
750-752,76x	Other reserves		\$0.00	
601	Appropriations	\$0.00		
602	Less: Expenditures	\$0.00		
	Less: Encumbrances	\$0.00	\$0.00	\$0.00
	<b>Total appropriated</b>			<b>\$0.00</b>
	Unappropriated:			
770	Fund balance, July 1		\$0.00	
771	Designated fund balance		\$0.00	
303	Budgeted fund balance		\$0.00	
	<b>Total fund balance</b>			<b>\$0.00</b>
	<b>Total liabilities and fund equity</b>			<b><u>\$0.00</u></b>


Starting date 7/1/2021 Ending date 6/30/2022 Fund: 40 DEBT SERVICE FUNDS

Recapitulation of Budgeted Fund Balance:

	<u>Budgeted</u>	<u>Actual</u>	<u>Variance</u>
Appropriations	\$0.00	\$0.00	\$0.00
Revenues	\$0.00	\$0.00	\$0.00
Subtotal	<u>\$0.00</u>	<u>\$0.00</u>	<u>\$0.00</u>
Change in capital reserve account:			
Plus - Increase in reserve	\$0.00	\$0.00	\$0.00
Less - Withdrawal from reserve	\$0.00	\$0.00	\$0.00
Subtotal	<u>\$0.00</u>	<u>\$0.00</u>	<u>\$0.00</u>
Change in maintenance reserve account:			
Plus - Increase in reserve	\$0.00	\$0.00	\$0.00
Less - Withdrawal from reserve	\$0.00	\$0.00	\$0.00
Subtotal	<u>\$0.00</u>	<u>\$0.00</u>	<u>\$0.00</u>
Change in emergency reserve account:			
Plus - Increase in reserve	\$0.00	\$0.00	\$0.00
Less - Withdrawal from reserve	\$0.00	\$0.00	\$0.00
Subtotal	<u>\$0.00</u>	<u>\$0.00</u>	<u>\$0.00</u>
Less: Adjustment for prior year	\$0.00	\$0.00	\$0.00
Budgeted fund balance	<u>\$0.00</u>	<u>\$0.00</u>	<u>\$0.00</u>

Prepared and submitted by :

  
Board Secretary

  
Date

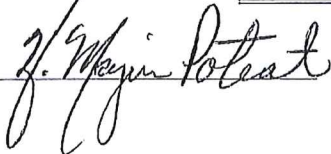
Starting date 7/1/2021 Ending date 6/30/2022 Fund: 40 DEBT SERVICE FUNDS

---

**DRAFT**

WINSLOW TOWNSHIP SCHOOL DISTRICT  
Reconciliation Report  
For the Month Ending June 30, 2022

<u>Funds</u>	<u>Beginning Cash Balances</u>	<u>Cash Receipts</u>	<u>Cash Disbursed</u>	<u>Ending Cash Balances</u>
<u>Governmental Funds</u>				
1 General Fund - Fund 10	\$ 20,907,886.04	\$ 5,925,393.26	10,529,488.70	\$ 16,303,790.60
Capital Reserve	10,184,968.91	1,371,444.81		11,556,413.72
Maintenance Reserve	4,380,133.63	451.71		4,380,585.34
2 Special Revenue Fund - Fund 20	-	727,994.42	727,994.42	0.00
3 Capital Projects Fund - Fund 30	9,040,077.99	378,375.00	1,467,372.68	7,951,080.31
4 Debt Service Fund - Fund 40	0.00			0.00
5 NJ Regional Day School - Fund 63	-			0.00
6 Total Governmental Funds (Lines 1 thru 5)	<u>\$ 44,513,066.57</u>	<u>\$ 8,403,659.20</u>	<u>\$ 12,724,855.80</u>	<u>\$ 40,191,869.97</u>
<u>Enterprise Funds</u>				
7 Cafeteria - Enterprise Fund - Fund 60	1,695,635.29	798,403.82	1,322,231.64	1,171,807.47
8 Cafeteria Online- Enterprise Fund	55,422.08	2,446.15	57,750.00	118.23
9 Before and After School Program - Winslow Child Development Fund 61	<u>1,080,436.31</u>	<u>37,899.39</u>	<u>114,573.48</u>	<u>1,003,762.22</u>
10 Total Enterprise Fund	<u>2,831,493.68</u>	<u>838,749.36</u>	<u>1,494,555.12</u>	<u>2,175,687.92</u>
11 Total Governmental and Enterprise Funds	<u>\$ 47,344,560.25</u>	<u>\$ 9,242,408.56</u>	<u>\$ 14,219,410.92</u>	<u>\$ 42,367,557.89</u>
<u>Trust &amp; Agency Funds - Fund 80, 91, 95 and 96</u>				
12 Unemployment Trust Fund 80	0.00			0.00
13 Payroll Agency - Fund 91	386,328.40	5,822,414.42	5,661,018.62	547,724.20
14 Payroll - Fund 91	2,000.00	3,356,698.40	3,356,697.73	2,000.67
15 Fiscal Agent -LCCR High School - 95	24,610.58		363.98	24,246.60
16 Student Activities Fund 96	98,877.79	16,673.43	8,429.93	107,121.29
17 Student Athletic Account - 97	0.00			0.00
18 Total Trust & Agency Fund (Lines 12 thru 17)	<u>511,816.77</u>	<u>9,195,786.25</u>	<u>9,026,510.26</u>	<u>681,092.76</u>
19 Total All Funds (Lines 6, 10, and 18)	<u>\$ 47,856,377.02</u>	<u>\$ 18,438,194.81</u>	<u>\$ 23,245,921.18</u>	<u>\$ 43,048,650.65</u>

Prepared by:   
Date: 07/27/22

*ask  
check -*

**WINSLOW TOWNSHIP SCHOOL DISTRICT  
DISPOSAL OF SCHOOL PROPERTY REQUEST**

School: WMS Department: Science Date: 6/30/22

Quantity	Description	Tag or Serial #	Est. Age	Condition/Reason
1	white refrigerator		+/-10 yrs	broken seal

Location of items for disposal: D102

Action to be taken to be determined by the Board Secretary:

- Deliver items to Building Supervisor to be destroyed.
- HOLD! Item will be sold at public sale.
- Hold for administrative review.

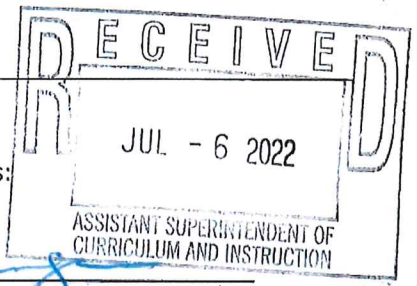
\_\_\_\_\_  
Board Secretary

Signatures:

*Stell Purgason*  
\_\_\_\_\_  
Supervisor/Department Chair

*Stell Purgason*  
\_\_\_\_\_  
Principal

*Wendy Caser* 7/1/22  
\_\_\_\_\_  
Superintendent/Designee



A work request (with a copy of the approved form attached) will be required for the maintenance department to transfer materials and/or equipment.

Submit requests to dispose of books to the office of the Assistant Superintendent's on the appropriate form.





8.18.22  
RJC

### WINSLOW TOWNSHIP SCHOOL DISTRICT DISPOSAL OF SCHOOL PROPERTY REQUEST

School: WMS Department: Unified Arts Date: 7/18/22

Quantity	Description	Tag or Serial #	Est. Age	Condition/Reason
2	tables		+/- 20 years	broken

Location of items for disposal: MC2

Action to be taken to be determined by the Board Secretary:

- Deliver items to Building Supervisor to be destroyed.
- HOLD! Item will be sold at public sale.
- Hold for administrative review.

\_\_\_\_\_  
Board Secretary

Signatures:

*[Signature]*  
Supervisor/Department Chair

*[Signature]*  
Principal

*[Signature]*  
Superintendent/Designee

7/19/22

RECEIVED

JUL 19 2022

ASSISTANT SUPERINTENDENT OF CURRICULUM AND INSTRUCTION

A work request (with a copy of the approved form attached) will be required for the maintenance department to transfer materials and/or equipment.  
Submit requests to dispose of books to the office of the Assistant Superintendent's on the appropriate form

RECEIVED

JUL 20 2022

BUSINESS ADMINISTRATOR

8.18.

# WINSLOW TOWNSHIP SCHOOL DISTRICT DISPOSAL OF SCHOOL PROPERTY REQUEST

School: Curriculum Office Department: Student Support Services Date: 07/12/2022

Quantity	Description	Tag or Serial #	Est. Age	Condition/Reason
1	Smart, keyboard communication	O-AD-0807-05896-	10 yr	outdated
1	TOAL-3, Speech testing kit	n/a	3 yr	outdated
1	TAPS-3, Speech testing kit	n/a	3 yr	outdated
1	TOLD-I4, speech testing kit	n/a	3 yr	outdated

Location of items for disposal: Student Support Services

Action to be taken to be determined by the Board Secretary:

- Deliver items to Building Supervisor to be destroyed.
- HOLD! Item will be sold at public sale.
- Hold for administrative review.

\_\_\_\_\_  
Board Secretary

Signatures:

[Signature] 7/13/22  
Supervisor/Department Chair

[Signature]  
Principal  
[Signature]  
Superintendent/Designee



Received

A work request (with a copy of the approved form attached) will be required for the maintenance department to transfer materials and/or equipment.

JUL 13 2022

Submit requests to dispose of books to the office of the Assistant Superintendent's on the appropriate form.

Assistant Superintendent of Curriculum and Instruction

8.10.22  
Hence -

# WINSLOW TOWNSHIP SCHOOL DISTRICT DISPOSAL OF SCHOOL PROPERTY REQUEST

School: Winslow Middle School Department: Science Date: 04/12/2022

Quantity	Description	Tag or Serial #	Est. Age	Condition/Reason
429	I-Science Leopard (student) ISBN:978-0-07-888006-3		10 yrs	New books were purchased
18	Leopard Teacher Edition Vol 1		10yrs	New books were purchased
21	Leopard Teacher Edition Vol 2		10yrs	New books were purchased
348	I-Science Owl (student) ISBN: 978-0-07-888007-0		10yrs	New books were purchases
16	I Science Owl (student) ISBN: 978-0-07-677287-2		5 yrs	New books were purchased
27	Owl Teacher Edition Vol 1		10yrs	New books were purchased
28	Owl Teacher Edition Vol 2		10yrs	New books were purchased
23	Teacher Resource Kits		10yrs	New books were purchased

Location of items for disposal: K-Hall Science Closet

Action to be taken to be determined by the Board Secretary:

- Deliver items to Building Supervisor to be destroyed.
- HOLD! Item will be sold at public sale.
- Hold for administrative review.

\_\_\_\_\_  
Board Secretary

RECEIVED  
 Signatures: APR 23 2022  
 ASSISTANT SUPERINTENDENT OF  
 CURRICULUM AND INSTRUCTION

\_\_\_\_\_  
Supervisor/Department Chair

Steve D...  
Principal

Norothy Caron 4/25/22  
Superintendent/Designee

A work request (with a copy of the approved form attached) will be required for the maintenance department to transfer materials and/or equipment.

Submit requests to dispose of books to the office of the Assistant Superintendent's on the appropriate form.

RECEIVED  
 APR 27 2022  
 BUSINESS ADMINISTRATOR

RECEIVED  
 JUL 29 2022  
 BUSINESS ADMINISTRATOR